



Tresilian Square, Hemel Hempstead, HP2 6EU
Offers In Excess Of £400,000

Situated in this popular road in Grovehill is this well presented end of terrace family home. Boasting three bedrooms, modern fitted kitchen. utility area, 24'7 lounge/dining room, study, gas central heating, double glazing and downstairs cloakroom.

Located within easy reach of the local shops, schools and transport facilities, Hemel Hempstead town centre and the M1, M25 and A41 road links.

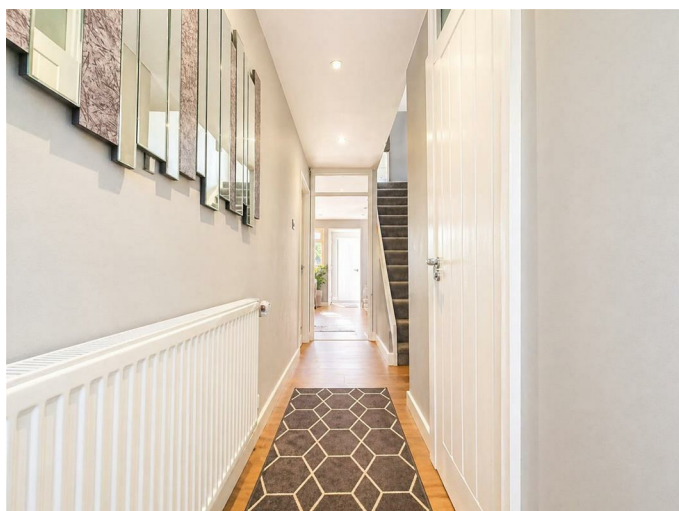
Located in the Tresilian Square, Grovehill, this delightful three-bedroom end of terrace family home offers a perfect blend of comfort and modern living. Spanning an impressive 883 square feet, the property boasts a spacious 24'7 lounge/dining room, ideal for both relaxation and entertaining guests and a study.

The heart of the home is undoubtedly the modern fitted kitchen, which includes a convenient utility area, making daily chores a breeze. The layout is thoughtfully designed to cater to family life, with a downstairs cloakroom adding to the practicality of the space.

The property benefits from gas central heating and double glazing, ensuring warmth and energy efficiency throughout the year. Each of the three bedrooms provides a peaceful retreat, perfect for unwinding after a long day.

This end terrace house is not just a home; it is a lifestyle choice, situated in a friendly neighbourhood that offers a sense of community. With its modern amenities and spacious living areas, this property is an excellent opportunity for families or those looking to invest in a comfortable and stylish home. Don't miss the chance to make this lovely house your new home.

Entrance Hall



Lounge/Dining Room 24'7 max x 11'6 max (7.49m max x 3.51m max)

Lounge Area



Dining Area



Modern Fitted Kitchen 12'9 x 9'0 (3.89m x 2.74m)



Utility Area 5'6 x 5'0 (1.68m x 1.52m)



Bedroom One 12'4 x 11'1 (3.76m x 3.38m)



Study 8'4 x 5'6 (2.54m x 1.68m)



Bedroom Two 12'2 x 10'0 (3.71m x 3.05m)



Downstairs Cloakroom



Bedroom Three 9'3 x 6'4 (2.82m x 1.93m)



Landing

Bathroom



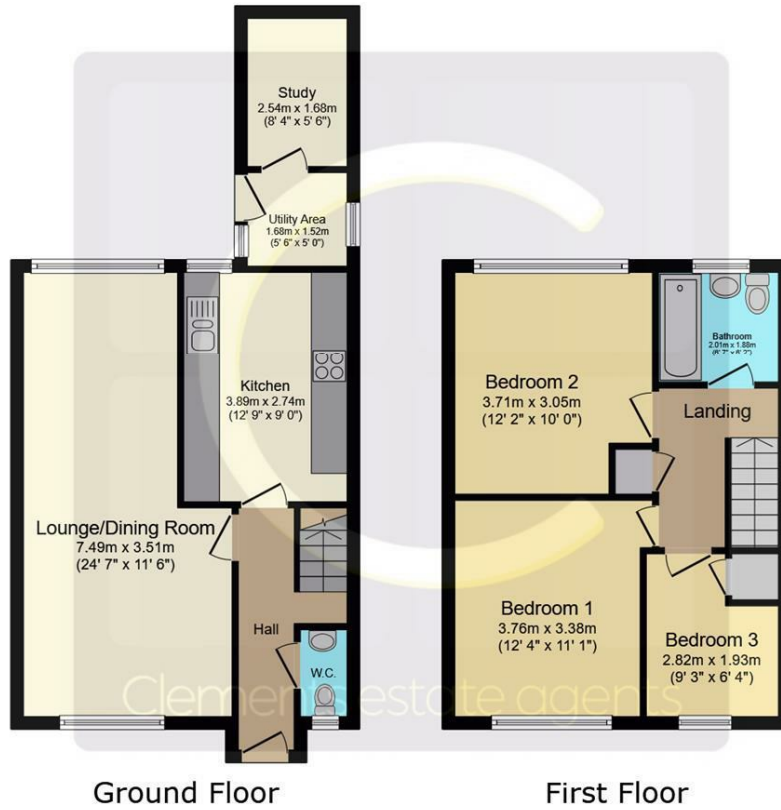
Outside



Rear Garden

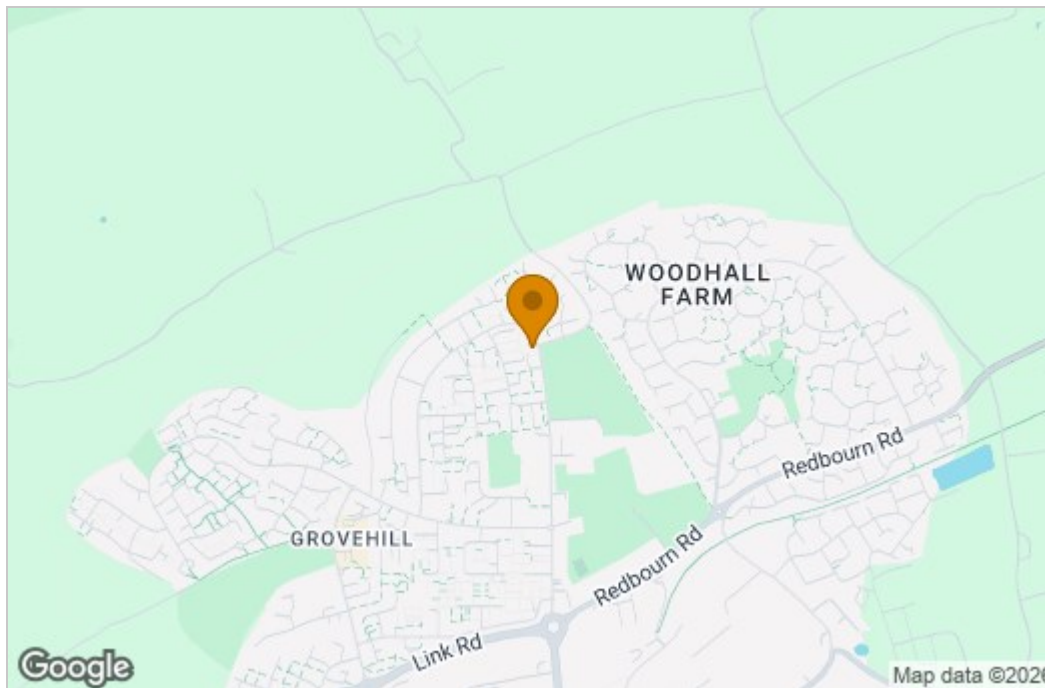


Floor Plan

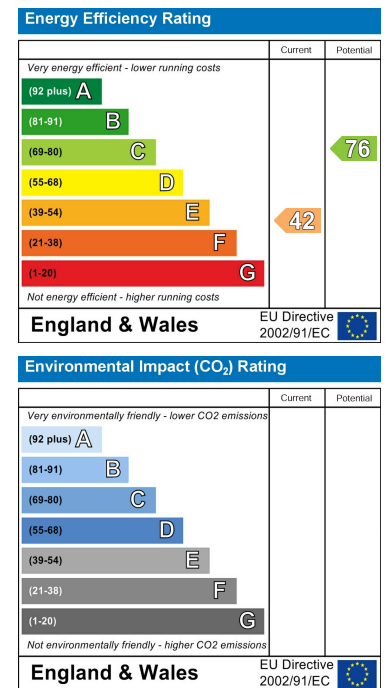


This floor plan is for illustrative purposes only. It is not drawn to scale. Any measurements, floor areas (including any total floor area), openings and orientations are approximate. No details are guaranteed, they cannot be relied upon for any purpose and do not form any part of any agreement. No liability is taken for any error, omission or misstatement. A party must rely upon its own inspection(s). Powered by www.Propertybox.io

Area Map



Energy Efficiency Graph



These particulars, whilst believed to be accurate are set out as a general outline only for guidance and do not constitute any part of an offer or contract. Intending purchasers should not rely on them as statements of representation of fact, but must satisfy themselves by inspection or otherwise as to their accuracy. No person in this firm's employment has the authority to make or give any representation or warranty in respect of the property.