



## Amwell Street, EC1R

### £850,000

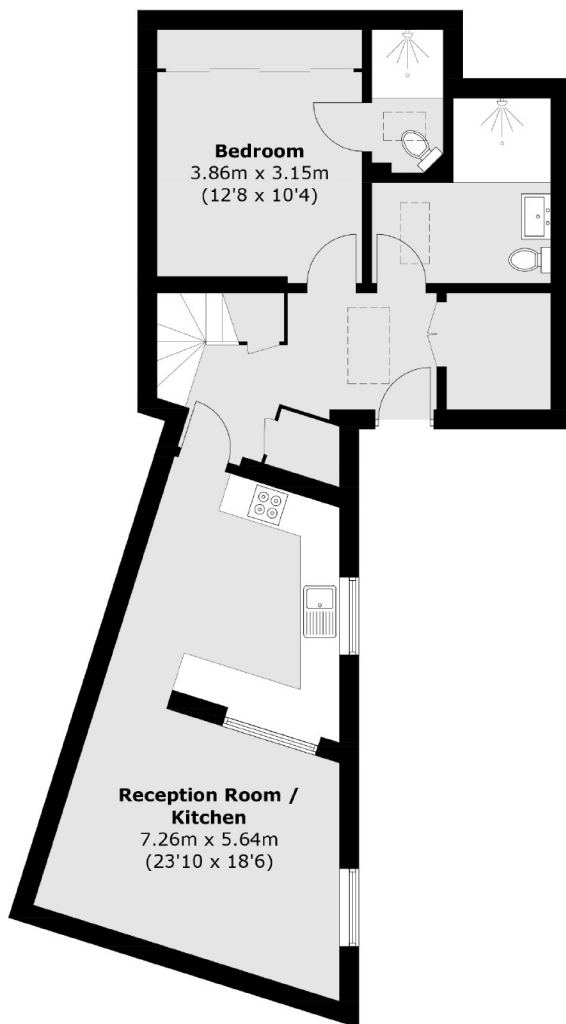
This recently refurbished Georgian maisonette is set in the desirable location of Amwell Street. This chain free home is well presented throughout and benefits from a private entrance, outside terrace, open plan kitchen and two bathrooms.

Amwell Street is around half a mile from Angel Station, Upper Street and Kings Cross St Pancras stations. Exmouth Market and Sadler's Wells Theatre are around a quarter of a mile away, whilst Farringdon station is within walking distance making Heathrow airport within easy reach.

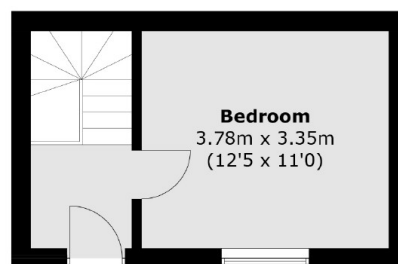
### Features

- Georgian Conversion
- Private Terrace
- Private Entrance
- Split level
- Two Bathroom

# Amwell Street, London, EC1R



**Lower Ground Floor**



**Ground Floor**

Total area (approx.): 82.6 sq. m (889.0 sq. ft)