



Windmill Close, Brandon, IP27 9BF

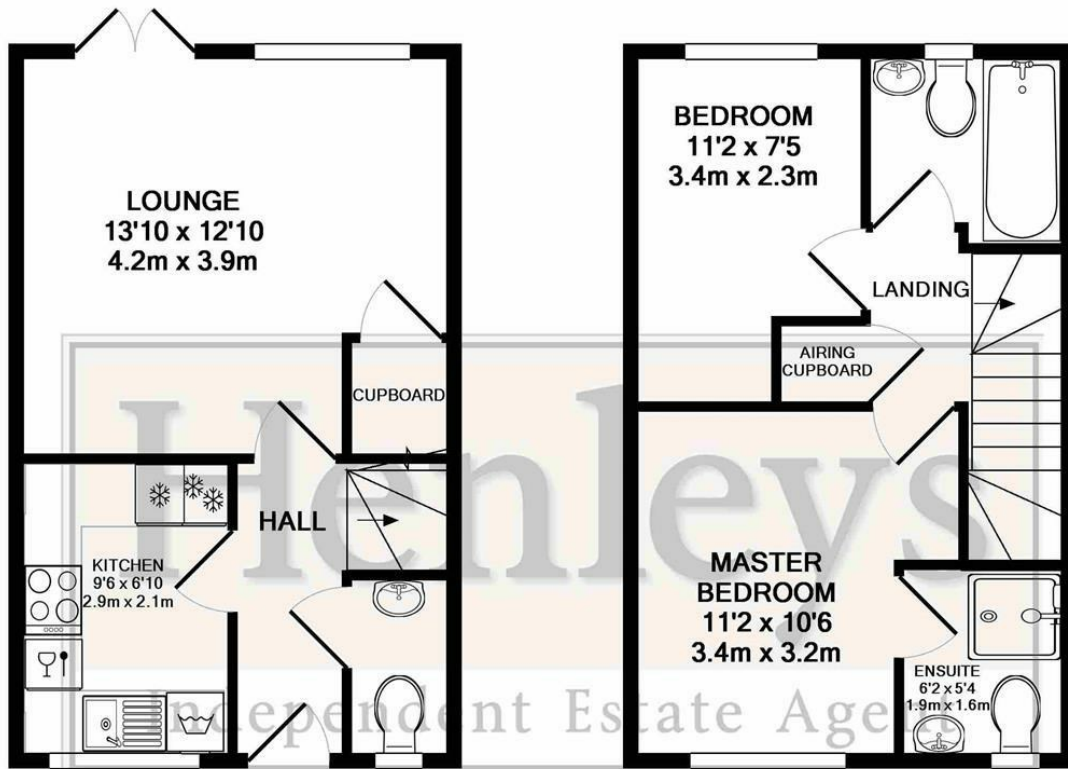
Rent - £1,215 PCM Deposit - £1,401

**** CLOSE TO RAF LAKENHEATH **** Modern well presented home located on a popular development in Lakenheath. 5 minute drive from RAF Lakenheath and 10 minute drive from RAF Mildenhall. Benefitting from a well fitted kitchen with range of integrated appliances as well as a bedroom with en-suite shower room.

- TERRACED HOUSE
- 2 BEDROOMS
- APPROXIMATE SIZE - 617 SQFT
- COUNCIL BAND - B
- AVAILABLE MID JULY
- CLOSE TO RAF BASES
- ELECTRIC HEATING & ENERGY RATING D
- FAMILY BATHROOM & ENSUTE SHOWER ROOM
- OFF ROAD PARKING & ENCLOSED REAR GARDEN



Council Tax Band: B - EPC Rating: D 62



GROUND FLOOR
 APPROX. FLOOR
 AREA 309 SQ.FT.
 (28.7 SQ.M.)

1ST FLOOR
 APPROX. FLOOR
 AREA 309 SQ.FT.
 (28.7 SQ.M.)

TOTAL APPROX. FLOOR AREA 617 SQ.FT. (57.3 SQ.M.)

Whilst every attempt has been made to ensure the accuracy of the floor plan contained here, measurements of doors, windows, rooms and any other items are approximate and no responsibility is taken for any error, omission, or mis-statement. This plan is for illustrative purposes only and should be used as such by any prospective purchaser. The services, systems and appliances shown have not been tested and no guarantee as to their operability or efficiency can be given
 Made with Metropix ©2018

