

OVER 60?

Secure this property
for up to **59% less!**



Guide Price

£500,000

Freehold

3x  1x  2x 

Diana Walk, Kings Hill, West Malling, Kent,

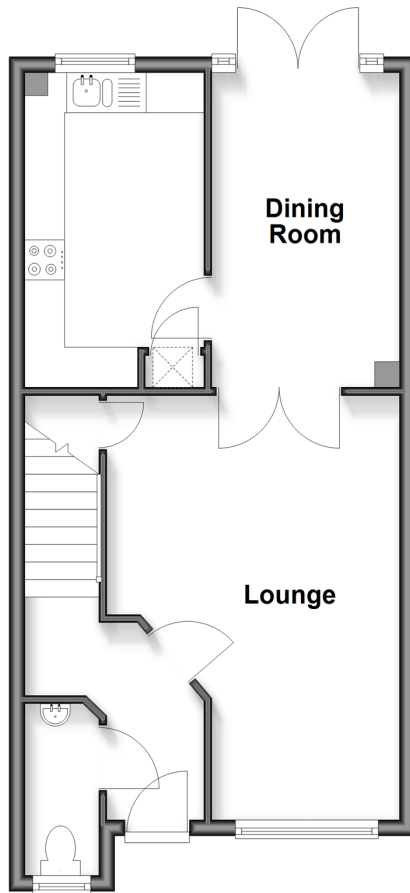
ME19

Wards

Helping you move forwards

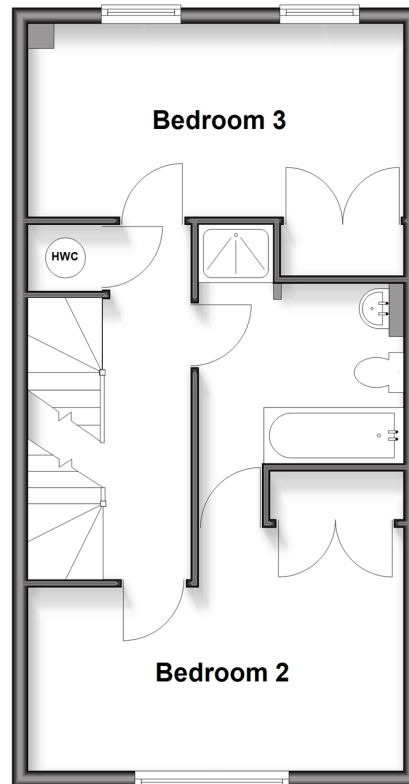
Ground Floor

Approx. 44.7 sq. metres (481.6 sq. feet)



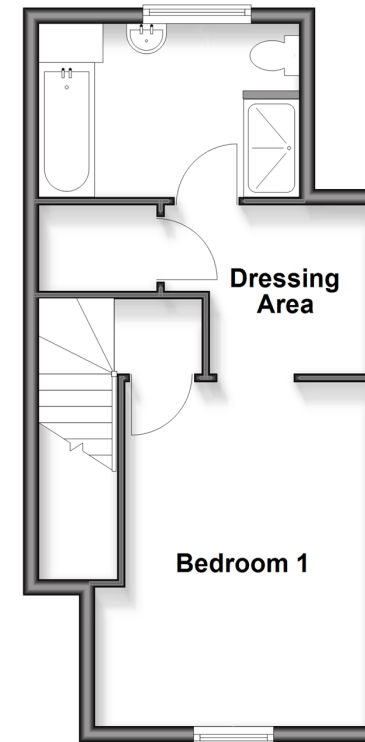
First Floor

Approx. 44.1 sq. metres (474.6 sq. feet)



Second Floor

Approx. 33.0 sq. metres (355.5 sq. feet)



Accommodation

GROUND FLOOR

Entrance Hall
Cloakroom
Lounge: 16'9 x 11'10 (5.11m x 3.61m)
Dining Room: 12'6 x 7'7 (3.81m x 2.31m)
Kitchen: 12'2 x 6'11 (3.71m x 2.11m)

FIRST FLOOR

Landing
Bedroom 2: 15'5 x 9'2 (4.70m x 2.80m)
Jack & Gill Bathroom
Bedroom 3: 15'5 x 7'10 (4.70m x 2.39m)

SECOND FLOOR

Bedroom 1: 13'9 x 10'10 (4.19m x 3.30m)
Dressing Area: 7'7 x 6'3 (2.31m x 1.91m)
En-Suite Bathroom

OUTSIDE

Rear Garden
Garage & Driveway for 2 Cars



Main features

- Semi-detached house with beautiful uninterrupted views of the cricket pitch
- South facing rear garden
- Garage and driveway for 2 cars
- Double bedrooms
- Walking distance of Discovery School and local amenities



Nearest Schools

Primary Schools: The Discovery School 0.3 miles, Valley Invicta Primary 0.7 miles, Kings Hill School 1.2 miles
Secondary Schools: St Augustine Academy 3.7 miles, Oakwood Park Grammar School 3.7 miles, Holmesdale Technology College 3.7 miles



Transport Information

Train Stations: Aylesford 3.0 miles, East Farleigh 3.0 miles, Yalding 3.1 miles



Address

Diana Walk, Kings Hill, West Malling, Kent, ME19



Directions

For directions to this property please contact us.



Wards
Helping you move forwards

Call Kings Hill Branch 01732 222211 ■ wardsof Kent.co.uk



■ Through a Homewise Home For Life Plan people aged 60+ can secure this property for up to 59% less, by purchasing a Lifetime Lease

| EPC RATING | CURRENT: | POTENTIAL: |
|---|---|---|
|   |  C(76) |  B(86) |

12401309/20260317/SW/BC