

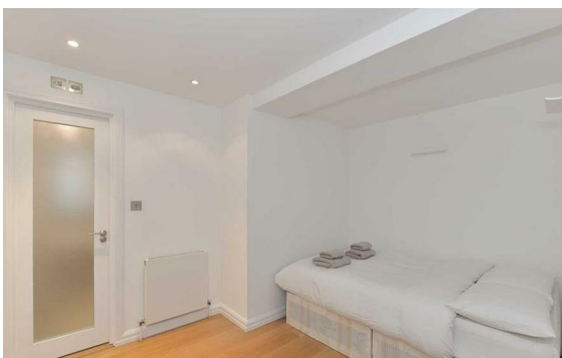


Baker Street, Marylebone, London, NW1

Rent £1,085 PCM

3 Bed | 2 Bath | 1 Reception

Please call us on 020 7724 2233 or email us info@newingtonstates.com to book a viewing.



A well-presented three-bedroom apartment offering generous living space and a practical layout in a sought-after central London setting. The property features a large reception and dining room, a separate modern kitchen with integrated appliances, and three well-proportioned bedrooms. Two bathrooms, including one en-suite, provide added convenience, while wood flooring and large windows enhance the bright and airy feel throughout.

Ideally located opposite Marylebone Station and within easy reach of Baker Street Station, with Marylebone High Street and Regent's Park nearby.

EPC Rating: C

Energy Efficiency Rating: C

Agents Note: Whilst every care has been taken to prepare these particulars, they are for guidance purposes only. All measurements are approximate and are for general guidance purposes only and whilst every care has been taken to ensure their accuracy, they should not be relied upon and potential buyers/tenants are advised to recheck the measurements.

NEWINGTON
— ESTATES —

60 Upper Montagu Street

London

W1H 1SN

020 7724 2233

info@newingtonstates.com

<http://www.newingtonstates.com>