



Russell Street, Cheltenham



move
Property Sales & Lettings



Russell Street

Cheltenham

NO ONWARD CHAIN - Well-presented two-bedroom semi in St Paul's, Cheltenham. Kitchen/diner, courtyard garden. Close to town, parks, transport, and amenities. Ideal for first-time buyers or investors.

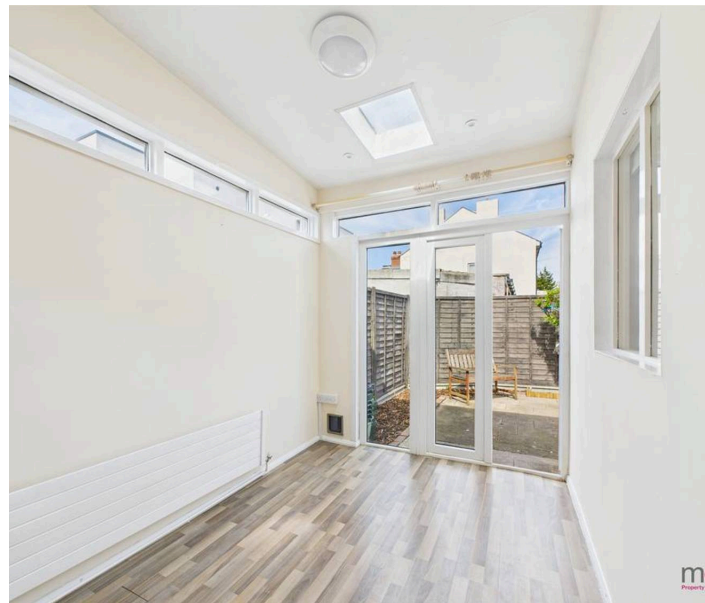
Council Tax band: B

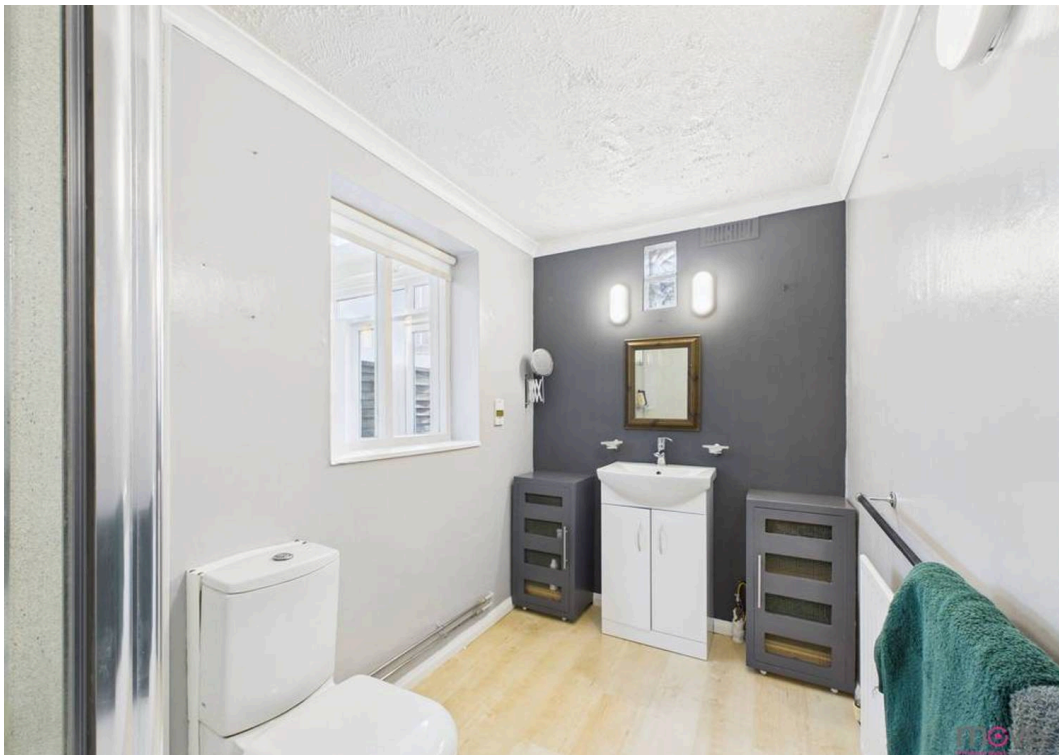
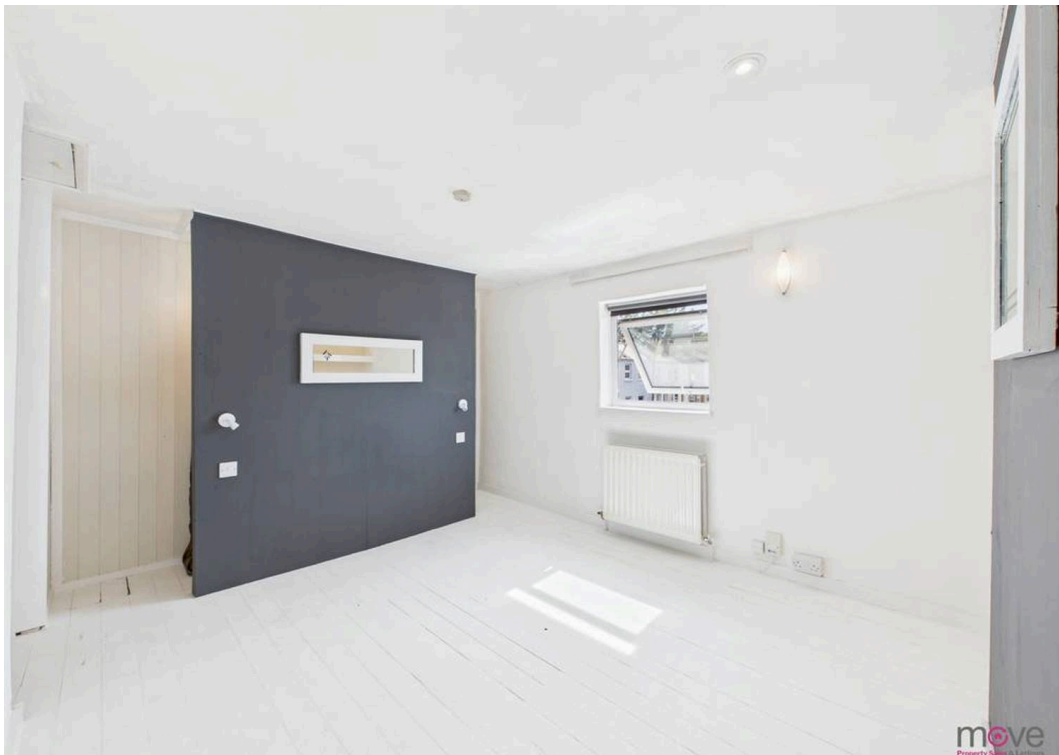
Tenure: Freehold

EPC Energy Efficiency Rating: D

EPC Environmental Impact Rating:

- Two Bedroom Semi Detached House
- NO ONWARD CHAIN
- Ideal For First Time Buyers Or Investment Purchase
- Open Plan Kitchen/Dining
- Ground Floor Shower Room
- Convenient Location to Town Centre and Brewery Quarter
- Great Transport Links to the Train Station, M5 and A40
- Private Enclosed Courtyard Garden







Move Estate Agents Cheltenham

1 The Clarence Clarence Parade, Cheltenham - GL50 3NY

01242 257333

cheltenham@move.uk.net

move.uk.net/

move
Property Sales & Lettings