



Lakeside Drive, NW10

£285,000

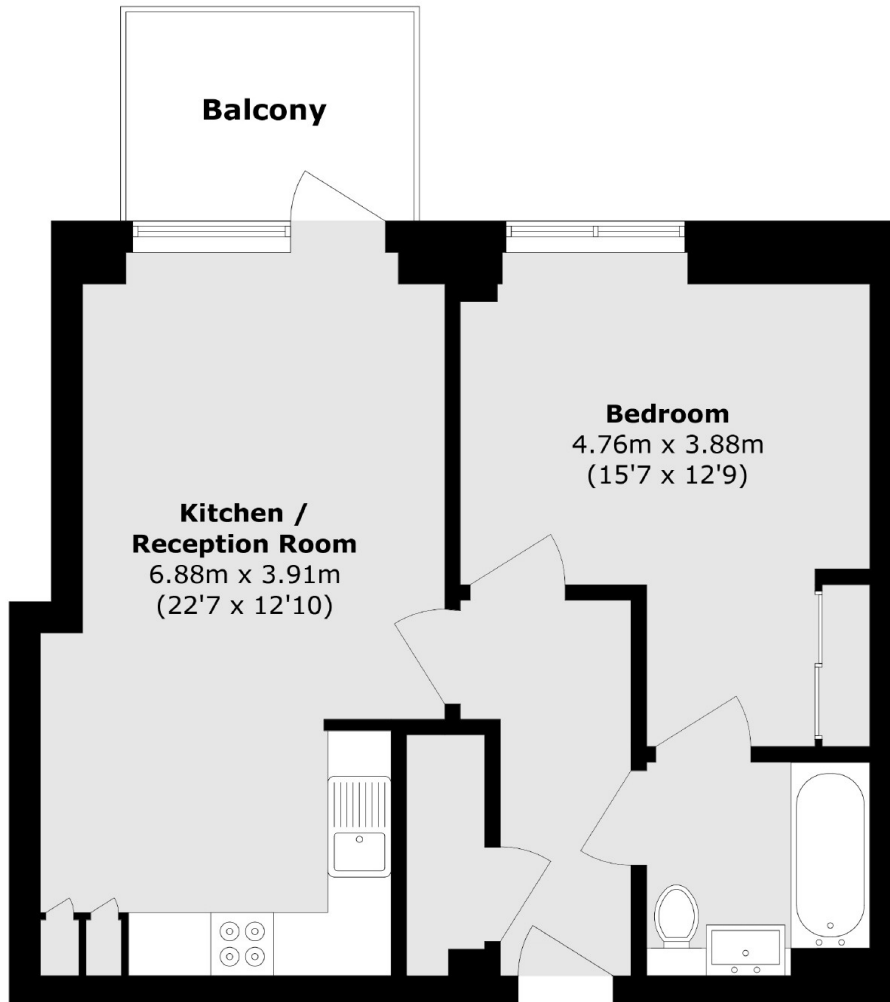
A sixth floor apartment which spans over 550 sq ft of living space. This one bedroom apartment has a large open plan kitchen living areas, floor to ceiling windows which allows a huge amount of light and a large balcony overlooking the lake.

Abbotsford Court is situated half a mile from both Park Royal and Hanger Lane stations with easy access to the A40.

Features

- One Bedroom
- Sixth Floor
- Underfloor Heating
- Balcony
- Communal Gardens
- Lake Views

Lakeside Drive, London, NW10



Total area (approx.): 52.7 sq. m (567.2 sq. ft)
Balcony area (approx.): 5.4 sq. m (58.1 sq. ft)