



# Deirdre Avenue , Wickford, SS12 0AY Guide Price £390,000

\*\* GUIDE PRICE £390,000 - £410,000 \*\*

Situated in the sought-after Deirdre Avenue, this CHAIN FREE, TWO bedroom semi-detached KEYHOLE bungalow offers spacious and versatile accommodation throughout. This spacious semi-detached bungalow is an ideal purchase for downsizers, first-time buyers, or those seeking single-level living in a convenient residential setting. It also offer excellent potential for enlargement and modernisation (STPP).

The property benefits from a welcoming entrance hallway leading to a bright and spacious lounge with attractive bay window, creating a warm and inviting living space. This combines with an open planned dining area, providing an excellent entertaining space. The fitted kitchen offers a range of storage units and work surfaces with access to the rear garden.

There are two well-proportioned bedrooms, including a generous master bedroom and a comfortable second bedroom suitable for guests, children or home office use. The accommodation is completed by a 3 piece bathroom.

Externally, the property enjoys a private rear garden with plenty of potential for outdoor dining and relaxation, while the front provides off-street parking.

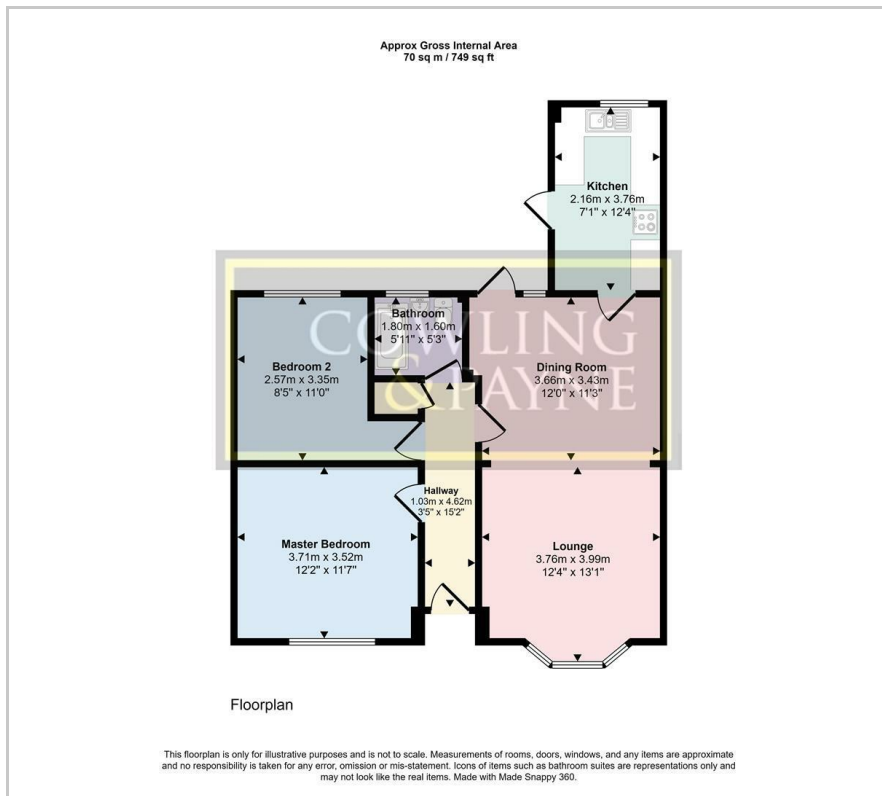
- GUIDE PRICE £390,000 - £410,000
- 2 BEDROOM KEY HOLE BUNGALOW
- POPULAR LOCATION
- POTENTIAL TO EXTEND (STPP)
- OFF STREET PARKING
- OPEN PLANNED LOUNGE/DINER
- NEARBY LOCAL AMENITIES
- NEARBY LOCAL SCHOOLS
- EPC - D
- COUNCIL TAX - C - BASILDON

### Viewing

Please contact our Sales Office on 01268 730707 if you wish to arrange a viewing appointment for this property or require further information.



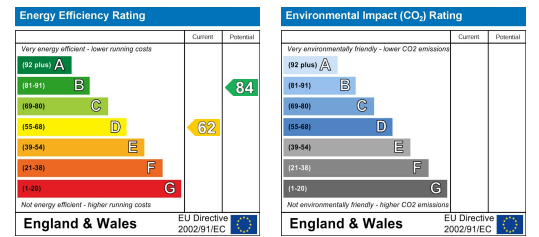
# Floor Plan



# Area Map



# Energy Efficiency Graph



These particulars, whilst believed to be accurate are set out as a general outline only for guidance and do not constitute any part of an offer or contract. Intending purchasers should not rely on them as statements of representation of fact, but must satisfy themselves by inspection or otherwise as to their accuracy. No person in this firm's employment has the authority to make or give any representation or warranty in respect of the property.

2-4 Runwell Road, Wickford, Essex, SS11 7AB

Tel: 01268 730707 Email: [info@cowlingandpayne.co.uk](mailto:info@cowlingandpayne.co.uk) <https://www.cowlingandpayne.co.uk>