



Nottingham Place | London | W1U

£1,625 Per Week |



ADN
RESIDENTIAL

Set on the first floor of an elegant red-brick period building, this beautifully refurbished one-bedroom apartment offers refined living in a highly desirable central London location.

The property features a bright and spacious reception room with impressive high ceilings and private balcony, creating a wonderful sense of space and light. A generously sized double bedroom includes built-in storage, while the contemporary fully fitted kitchen has been thoughtfully designed for modern living. The sleek bathroom is finished to a high standard and includes a full-size bath.

Perfectly positioned, the apartment is just moments from the tranquil green spaces of Regent's Park, the world-class shopping of Oxford Street, and the vibrant cafés, restaurants, and boutiques of Marylebone Village.

Excellent transport links are available nearby, including Baker Street Station, Regent's Park Station, and Great Portland Street Station, providing convenient access across London.

Council Tax: Westminster – Band E

Security Deposit: £8,125

Holding Deposit: £1,625

Deposits shown are based on an Assured Periodic Tenancy Agreement.

- One Bedroom
- Recently refurbished to a high standard
- Bright and generously proportioned interiors
- Large windows providing excellent natural light
- Balcony
- Offered fully furnished
- Elegant wooden flooring throughout
- Excellent built-in storage space

Council Tax Band: E

EPC: C

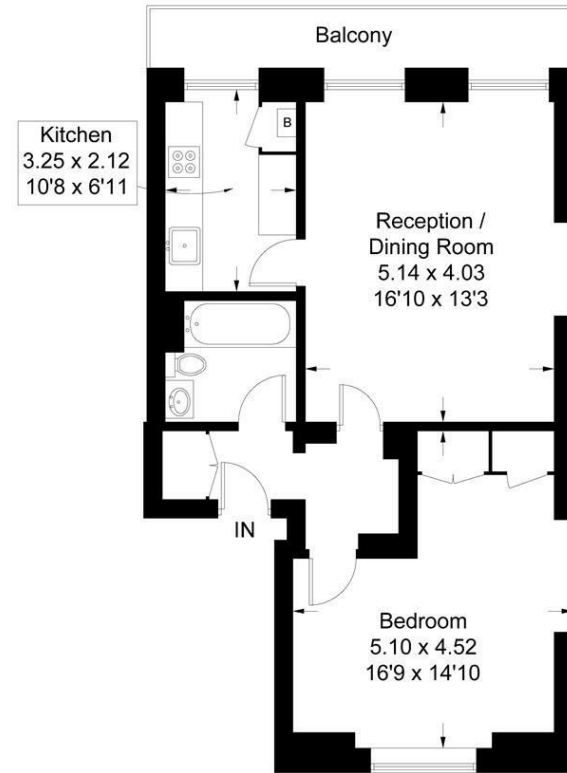




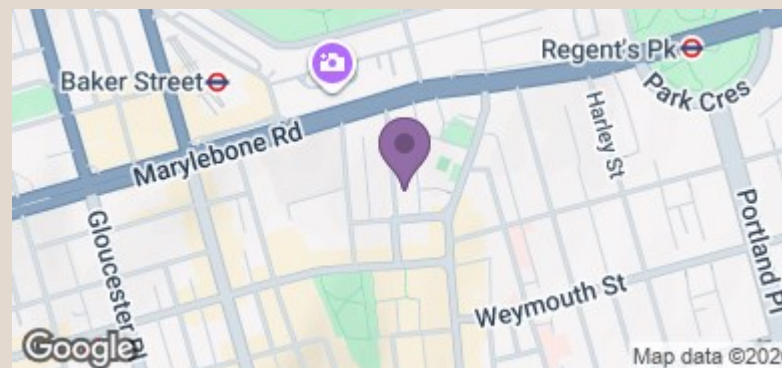


Nottingham Place, W1U

Approximate Gross Internal Area
58.0 sq m / 624 sq ft



First Floor



Energy Efficiency Rating		Current	Potential
Very energy efficient - lower running costs			
(92 plus) A			
(81-91) B			
(69-80) C		77	83
(55-68) D			
(39-54) E			
(21-38) F			
(1-20) G			
Not energy efficient - higher running costs			
England & Wales		EU Directive 2002/91/EC	