



Reckitt Road, London, W4  
Guide Price £1,500,000

**WHITMAN & CO.**

SALES · LETTINGS · COMMERCIAL



A charming well-presented period cottage, ideally located in the highly sought-after Glebe Estate, offering an excellent balance of living and entertaining space in this central Chiswick location.

The property comprises three double bedrooms, two bathrooms, through reception room, 21' bespoke kitchen/breakfast room, and a private 24' south-facing landscaped garden with a shed.

Ideally located within close proximity of Turnham Green Tube Station and the extensive range of shops, bars and restaurants on Chiswick High Road. Offered for sale with no onward chain.



# Reckitt Road, W4

Approximate Gross Internal Area

150.92 sq m / 1624 sq ft

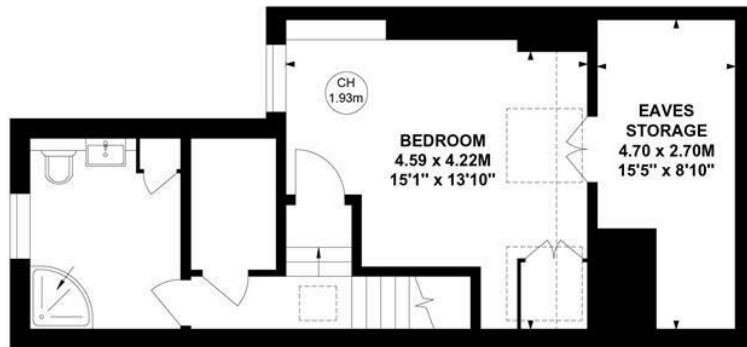
(Including Eaves Storage & External Storage)

Eaves Storage : 8.50 sq m / 91 sq ft

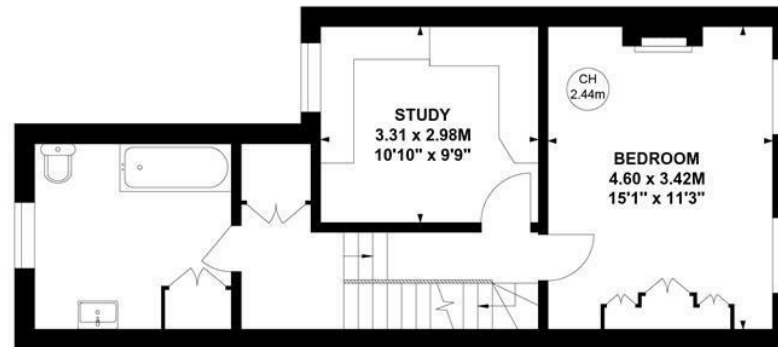
External Storage : 2.66 sq m / 29 sq ft



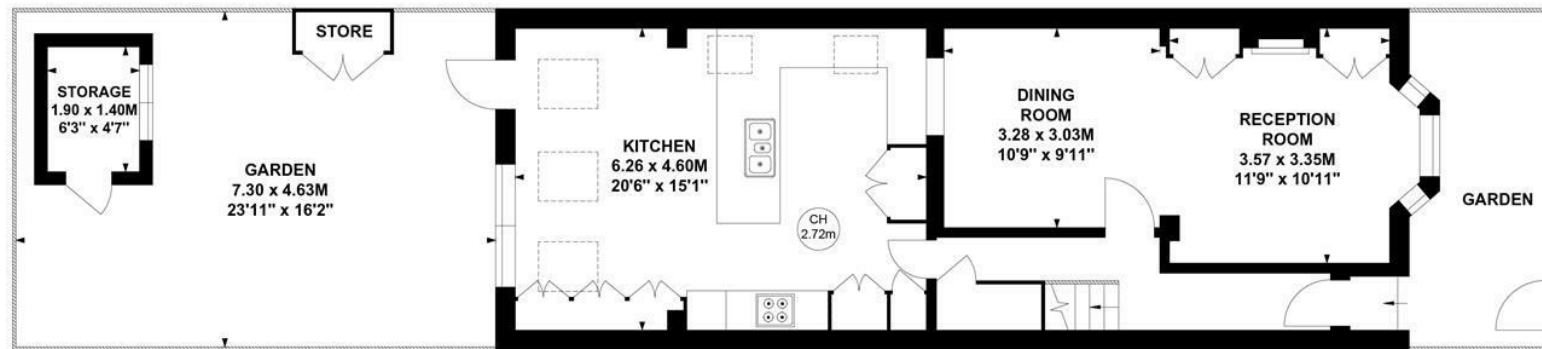
Key :  
CH - Ceiling Height



Second Floor



First Floor



Ground Floor

Not to scale, for guidance only and must not be relied upon as a statement of fact.  
All measurements and areas are approximate only

- Highly sought after Chiswick location
- Through reception room
- South-facing landscaped garden

- Three double bedrooms/two bathrooms
- Bespoke kitchen/breakfast room
- Offered with no onward chain

Tenure - Freehold  
Local Authority - Hounslow  
Council Tax - Band F

