



Price

£80,000

Leasehold

1x  1x  1x 

**Lewes Court,
Chatsworth Place,
Mitcham, Surrey, CR4**



Video Tour available

cubitt & west
Helping you move forwards



Main features

- One bedroom 1st floor apartment
- 70% shared ownership
- Communal lounge, parking, gardens and laundry room
- New lease on completion - 99 years remaining
- Located close to Mitcham town centre, common and station

Accommodation

FIRST FLOOR

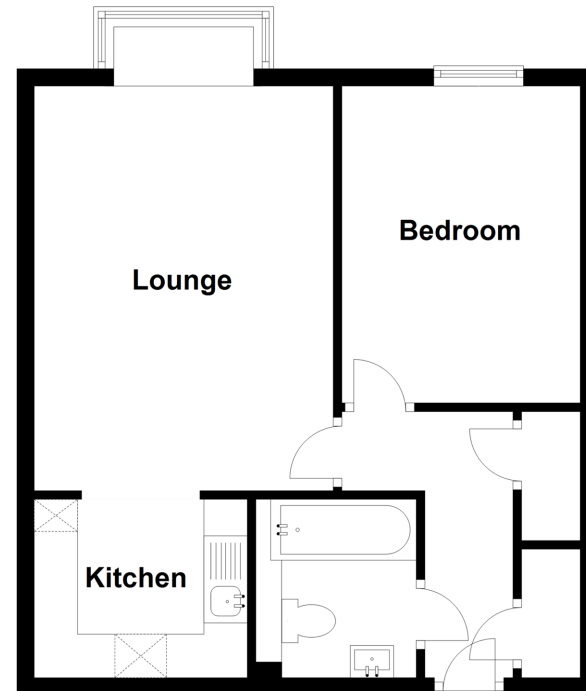
- Entrance Hall
- Lounge/Dining Room : 15'7 x 11'1 (4.75m x 3.38m)
- Kitchen: 7'9 into fitted units x 6'8 (2.36m x 2.03m)
- Bedroom: 11'9 x 9'1 (3.58m x 2.77m)
- Bathroom: 6'8 x 5'9 (2.03m x 1.75m)
- Communal Laundry Room
- Communal Lounge
- Guest Suite

OUTSIDE

- Communal Gardens

First Floor

Approx. 43.4 sq. metres (467.0 sq. feet)



Call Wallington - 020 8647 0011 ■ cubittandwest.co.uk

■ Legal advice should be taken to verify fixtures/fittings, planning, alterations and/or lease details

■ Appliances & services are untested, dimensions are approximate and floor plans are not to scale



22116702/20240910/DK/JA