

Aston & Co

ESTATE & LETTING AGENTS



17 Haddon Close

Syston, Leicester, LE7 1HZ

£375,000



Set in a private position on a no through road is this immaculately presented, four bedroom, three bathroom detached family home set within walking distance of the centre and station. Offering four double bedrooms, two en-suites and a family bathroom this house is ideal for growing families in need of more space. The ground floor offers a full length lounge, full length kitchen-diner, utility room and a WC. The property also benefits from a private garden, off road parking, garage, uPVC double glazing and gas central heating.

- Immaculately Presented
- Executive Detached Family Home
- Four Double Bedrooms
- Family Bathroom, Two En-Suites
- Downstairs WC & Utility
- Off Road Parking & Garage
- Private Rear Garden
- EPC Rating C / Freehold / Council Tax Band E



Location

Syston is located around 5 miles north of Leicester City Centre and approximately 10 miles from Loughborough. The location is convenient for local shops, supermarkets, Syston Train Station, Thurmaston Retail Park and the motorway network. Local Schools include Merton Primary School and Wreake Valley Academy.

The Property

The property is entered via a composite door leading into.

Entrance Hall

With stairs leading to the first floor, radiator and provides access to the following.

Lounge

16'05 x 10'07 (5.00m x 3.23m)

Full length lounge with gas fire and feature surround, coved ceiling, uPVC double glazed window to the front aspect and uPVC double glazed French doors leading out onto the rear garden.

Kitchen-Diner

16'05 x 9'06 (5.00m x 2.90m)

Fitted with a range of floor and wall mounted units with rolltop work surface and tiled splashbacks. The kitchen benefits from a gas hob, oven and extractor fan, stainless steel sink and drainer unit, integrated fridge and freezer, integrated dishwasher, spotlights and leads into the utility.

The dining area houses the family dining table with uPVC double glazed window to the front aspect.

Utility

4'09 x 6'10 (1.45m x 2.08m)

With plumbing for a washing machine, worktop, storage under the stairs and leads out onto the rear garden via the back door.

WC

5'07 x 3'08 (1.70m x 1.12m)

With pedestal basin, wc, extractor fan and radiator.

The First Floor Landing

Providing access to the following.

Bedroom One

16'05 x 10'07 (5.00m x 3.23m)

Large double bedroom with fitted robes, dual aspect uPVC double glazed windows and en-suite shower room.

En-Suite

5 x 7 (1.52m x 2.13m)

Fitted with a three piece suite comprising walk in shower, vanity unit with basin and wc. The tiled en-suite also benefits from a heated towel rail, extractor fan and obscure uPVC double glazed window to the front aspect.

Bedroom Four

9'04 x 10'05 (2.84m x 3.18m)

(maximum measurements) Double bedroom with storage cupboard and uPVC double glazed window to the front aspect.

Family Bathroom

6'09 x 7'05 (2.06m x 2.26m)

Fitted with a three piece suite comprising bath with a shower over, pedestal basin and wc. The bathroom also benefits from a heated towel rail, extractor fan and obscure uPVC double glazed window to the rear aspect.

The Second Floor Landing

Providing access to the following.

Bedroom Two

10'08 x 13'09 (3.25m x 4.19m)

Double bedroom with fitted robes, velux window and en-suite shower room.

En-Suite

5'05 x 10'07 (1.65m x 3.23m)

Fitted with a three piece suite comprising walk in shower, pedestal basin and wc. The en-suite also benefits from an extractor fan, radiator and obscure uPVC double glazed window to the front aspect.

Bedroom Three

16'05 x 10'05 (5.00m x 3.18m)

(maximum measurements) Double bedroom with dual aspect double glazed windows.

Outside

To the front is a tarmac driveway which in turn leads to the garage, gate leading to the rear garden and a gravelled frontage with paved path leading to the front door.

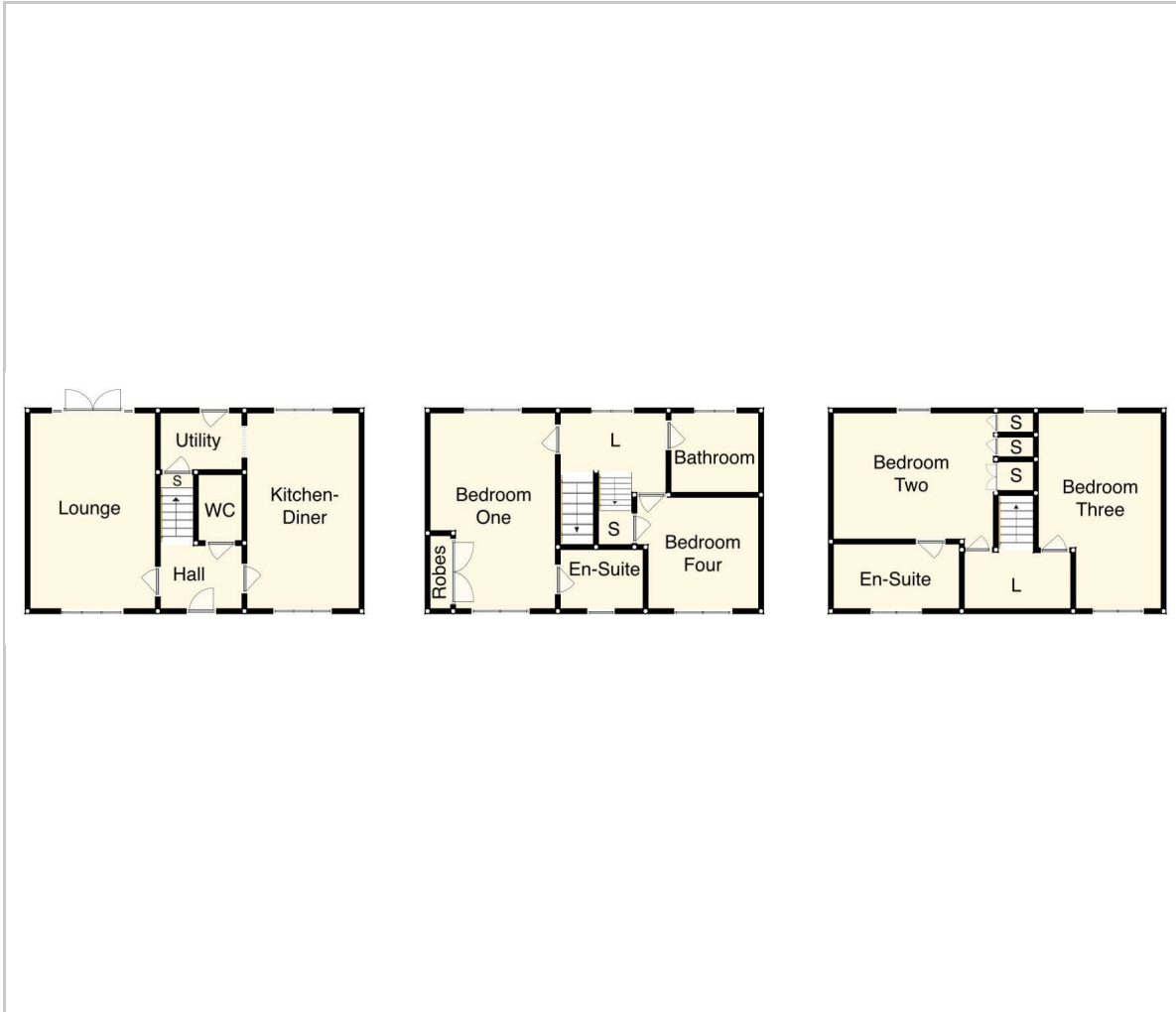
To the rear is a mature lawned garden with paved path leading to the garage personnel door, gravelled area, planted borders and fenced boundaries.

Garage

With up and over door, personnel door, power, light and boarded roof space.



Floor Plan



Viewing

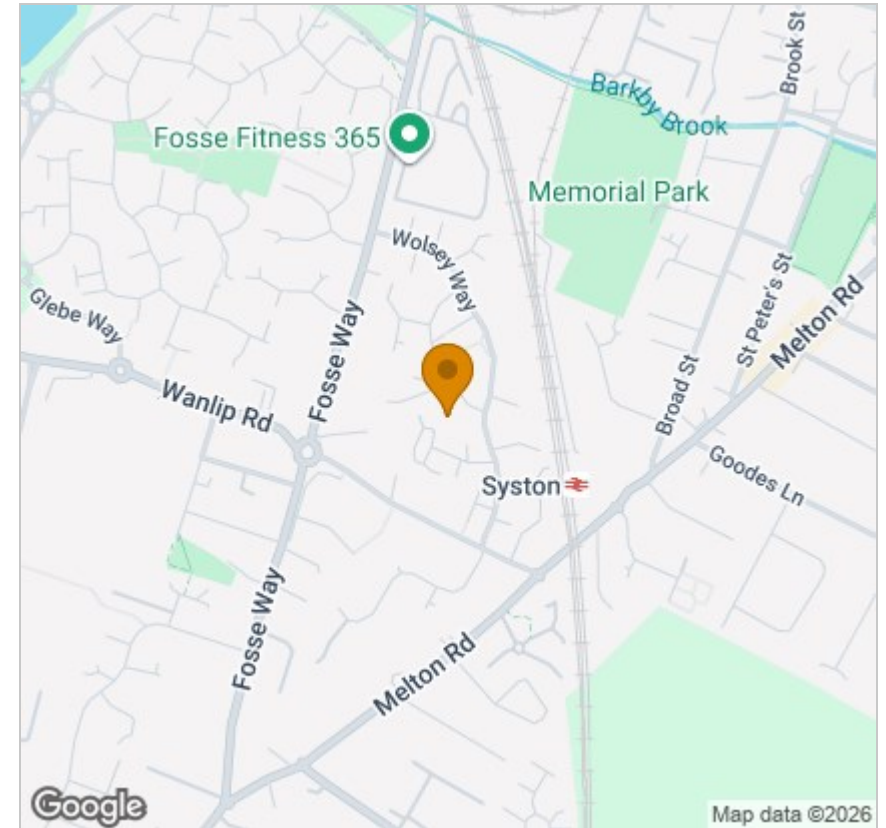
Please contact our Syston Sales Office on 0116 2607788 if you wish to arrange a viewing appointment for this property or require further information.

These particulars, whilst believed to be accurate are set out as a general outline only for guidance and do not constitute any part of an offer or contract. Intending purchasers should not rely on them as statements of representation of fact, but must satisfy themselves by inspection or otherwise as to their accuracy. No person in this firm's employment has the authority to make or give any representation or warranty in respect of the property.

4 High Street Syston, Leicester, LE7 1GP

Tel: 0116 2607788 Email: syston@astonandco.co.uk <https://astonandco.co.uk/>

Area Map



Energy Efficiency Graph

