

Ashford Road, NW2

£325,000

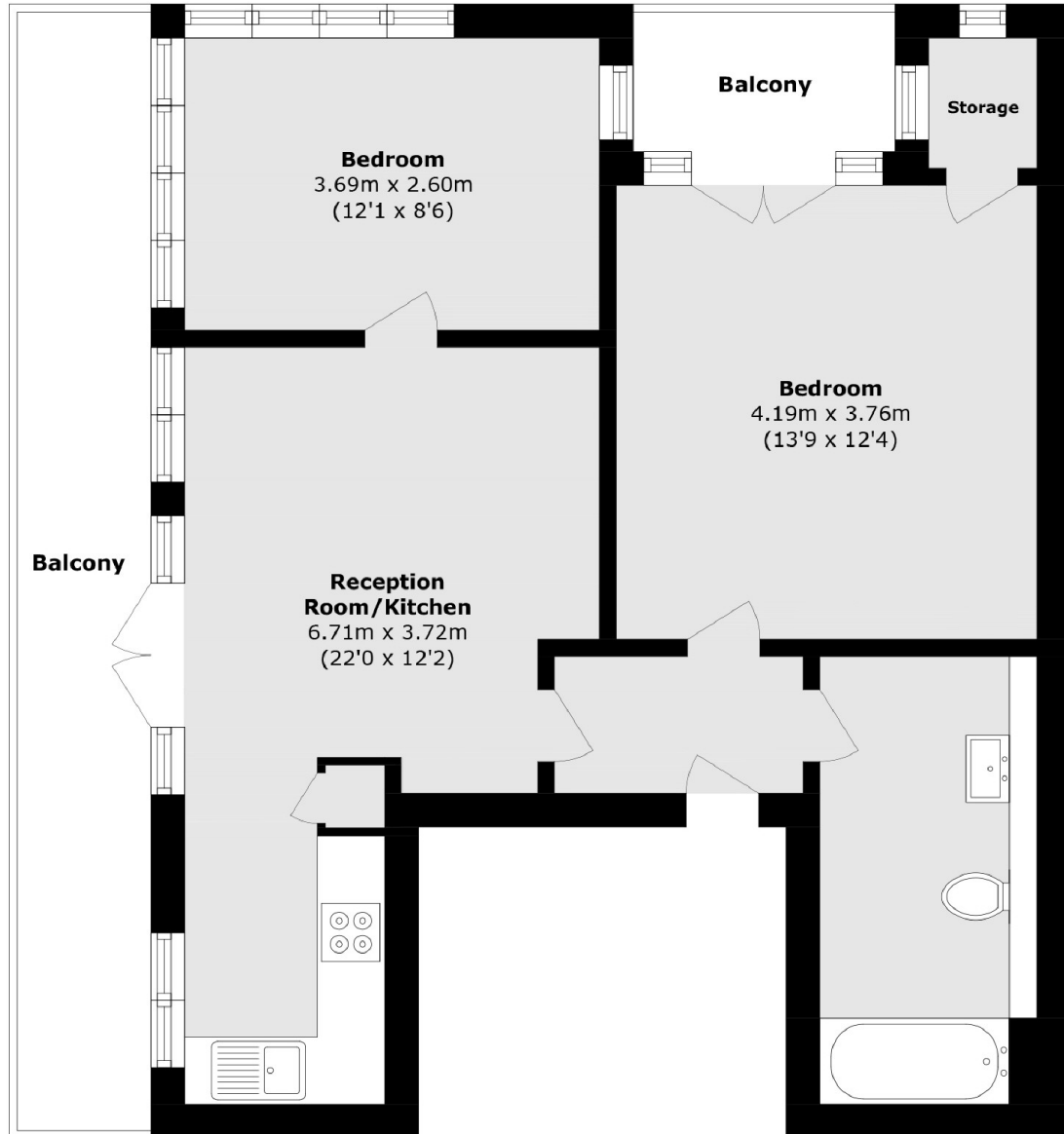
A third floor, two bedroom apartment with a modern bathroom, an open plan living area with a fitted kitchen and a private balcony. Offered with a long lease and no onward chain.

Ashford Road is situated within close proximity to Gladstone Park. Cricklewood (Thameslink) and Willesden Green (Jubilee line) are both within walking distance, making this ideal for the city commuter.

Features

- Third Floor
- Two Bedrooms
- Open Plan Living Area
- Private Balcony
- Long Lease
- No Onward Chain

Ashford Road,
London, NW2



Total area (approx.): 57.3 sq. m (616.7 sq. ft)
Balcony area (approx.): 14.7 sq. m (158.2 sq. ft)