



Chestnut House, Whissendine



A spacious and beautifully presented five-bedroom family home, with double garage, large landscaped garden with water features, and views towards Whissendine Windmill, set within this highly regarded Rutland village.

- Five well-proportioned bedrooms
- Principal bedroom with en-suite and double vanity basin
- Bedroom two with en-suite shower room
- Modern kitchen/breakfast room with central breakfast bar
- Separate dining room with feature hanging lighting
- Sitting room with fireplace
- Contemporary feature wall with inset electric fire and illuminated shelving
- Large landscaped rear garden with water features
- Front garden, driveway and double garage
- Views towards Whissendine Windmill





The property is entered via a spacious, welcoming entrance hall, leading through to a well-proportioned sitting room featuring a fireplace, creating a cosy and inviting living space. The modern kitchen/breakfast room is fitted with a range of contemporary units and benefits from a central breakfast bar. Adjoining the kitchen is a bright and airy dining room, enhanced by feature hanging lighting above the table and enjoying views out over the garden. Further ground floor accommodation includes a study, and additional reception space, with contemporary feature wall incorporating a sleek inset electric fireplace, framed by bespoke built-in shelving with integrated display lighting.

To the first floor is a spacious landing giving access to all rooms. The principal bedroom suite benefits from a modern en-suite shower room with double vanity basin. Bedroom two also enjoys the advantage of its own en-suite shower room. There are three further bedrooms, all well-proportioned and served by a stylish family bathroom. All bathrooms and en-suites are presented to a modern standard throughout.



The property sits within a generous plot, with a large landscaped rear garden featuring attractive water features, creating a peaceful and private setting ideal for relaxing and entertaining. To the front, the property enjoys views towards Whissendine Windmill, along with a front garden, driveway providing ample off-road parking, and a double garage.

Whissendine is a highly regarded Rutland village offering a strong sense of community, with amenities including a village shop, pub and primary school. The market towns of Oakham and Uppingham are within easy reach, along with Rutland Water and excellent schooling options.



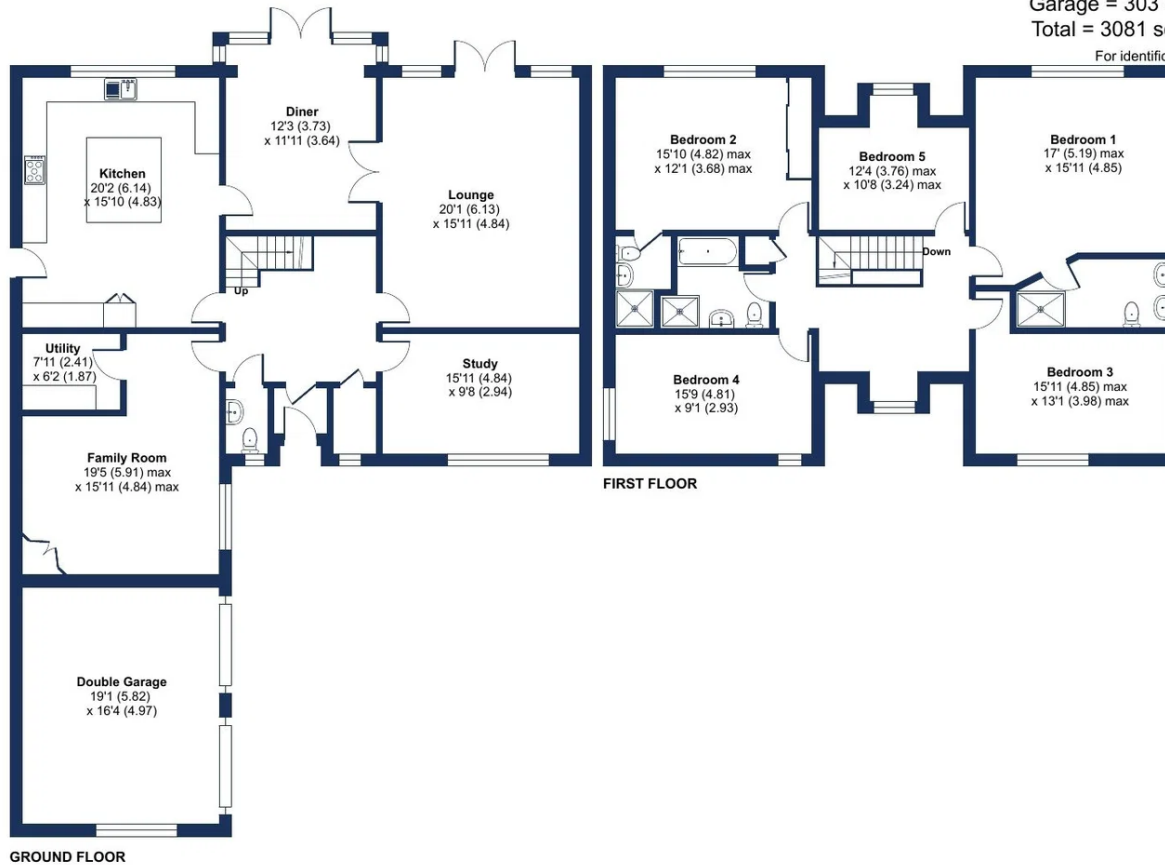
# Melton Road, Whissendine, Oakham, LE15

Approximate Area = 2778 sq ft / 258 sq m

Garage = 303 sq ft / 28.1 sq m

Total = 3081 sq ft / 286.1 sq m

For identification only - Not to scale



Floor plan produced in accordance with RICS Property Measurement 2nd Edition, Incorporating International Property Measurement Standards (IPMS2 Residential). © nitchcom 2026. Produced for Moores Estate Agents. REF: 1431296



Energy Efficiency Rating		Current	Potential
Very energy efficient - lower running costs			
(92 plus)	A		
(81-91)	B		
(69-80)	C	78	81
(55-68)	D		
(39-54)	E		
(21-38)	F		
(1-20)	G		
Not energy efficient - higher running costs			
England & Wales		EU Directive 2002/91/EC	



Moores Property Hub 01572 757979  
 Moores Move to the Country 020 301 11361  
 Melton 01664 491629  
 Uppingham 01572 821935

Stamford 01780 484555  
 Grantham Meet and Greet 01476 855618  
 Peterborough Meet and Greet 01733 788888  
 A1 Meet & Greet Stoke Rochford



office@mooresestateagents.com  
 www.countryequestrianhomes.com