



Guide Price

£375,000

Freehold

2x  1x  1x 

**Milner Road, Caterham,
Surrey, CR3**

OVER 60?

Secure this property
for up to **59% less!**

cubitt & west
Helping you move forwards



Main features

- Two bedroom detached bungalow
- Two allocated parking spaces
- Large rear garden and front patio area
- Potential to extend subject to planning permission
- Positioned on a private road & great for walks

Accommodation

GROUND FLOOR

Lounge: 13'4 x 11'7 (4.07m x 3.53m)

Conservatory: 14'2 x 8'2 (4.32m x 2.49m)

Kitchen: 12'5 x 7'3 (3.79m x 2.21m)

Bedroom 1 : 13'6 x 11'2 (4.12m x 3.41m)

Bedroom 2: 12'8 x 10'7 (3.86m x 3.23m)

Bathroom: 7'8 x 4'7 (2.34m x 1.40m)

OUTSIDE

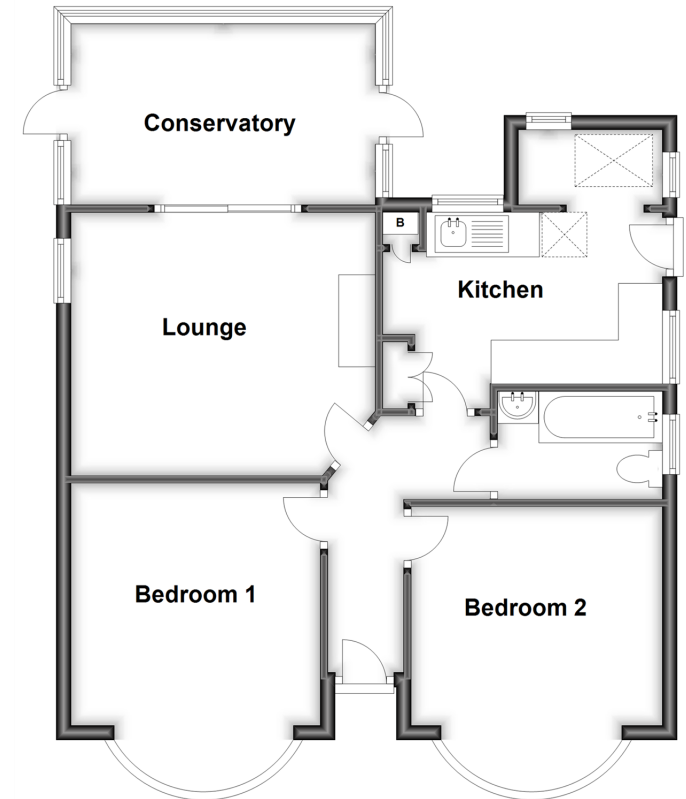
- Allocated Parking
- Front Garden
- Rear Garden

Call Caterham - 01883 331000 ■ cubittandwest.co.uk

- If buying to let, the energy rating will need to be improved to at least 'E' rating before you can let the property
- Legal advice should be taken to verify fixtures/fittings, planning, alterations and/or lease details
- Appliances & services are untested, dimensions are approximate and floor plans are not to scale
- Through a Homewise Home For Life Plan people aged 60+ can secure this property for up to 59% less, by purchasing a Lifetime Lease

Ground Floor

Approx. 68.7 sq. metres (739.0 sq. feet)



24406205/20260314/JE/LP