



Adam Close, King's Lynn, PE30 4UD

welcome to

Adam Close, King's Lynn

Ideal first time buy or investment opportunity with this well presented three bedroom end of terrace house located close to the Queen Elizabeth Hospital. Viewing highly recommended.



Entrance Door To:-

Entrance Hall

Radiator, stairs to first floor

Lounge

13' x 11' 4" (3.96m x 3.45m)

LVT flooring, radiator, bay window to front aspect, under stairs storage cupboard

Kitchen/ Breakfast Room

18' 7" x 10' 6" (5.66m x 3.20m)

Range of base and wall units, roll edge work top, inset stainless steel sink with mixer tap over, built-in oven, gas hob, extractor over, integrated dishwasher, space for American-style fridge freezer, window to rear, inset spotlights, radiator, patio doors to rear

Cloakroom

Low level Wc, wash hand basin, tiled floor, radiator, double glazed window

First Floor Landing

Loft access to part boarded and insulated loft space

Bedroom One

12' 8" x 10' 4" (3.86m x 3.15m)

Built-in wardrobe, radiator, double glazed window

Bedroom Two

10' 10" x 10' 1" (3.30m x 3.07m)

Double glazed window, radiator

Bedroom Three

8' 4" x 7' 2" (2.54m x 2.18m)

Double glazed window, radiator

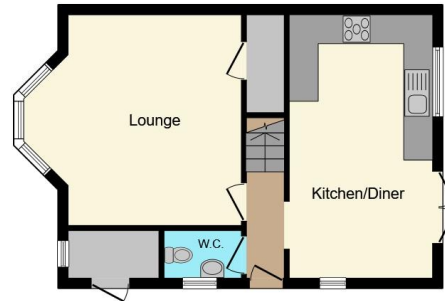
Shower Room

7' 7" x 5' 7" (2.31m x 1.70m)

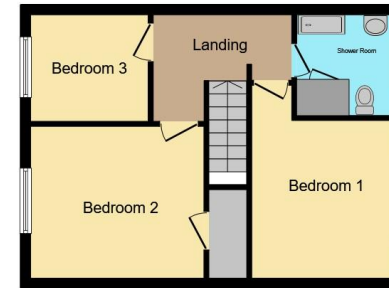
Shower cubicle with rainwater shower head, wash hand basin with storage below, low level WC, storage cupboard, inset spotlights, double glazed window, to rear, ceramic tiled floor and walls

Outside

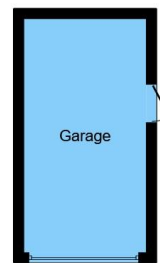
Enclosed front garden with side gate leading to the rear garden which is laid to slab for easy maintenance and makes an ideal entertaining area. There is off road parking and a single garage with up and over door, power and light.



Ground Floor



First Floor



Garage

william h brown

This floor plan is for illustrative purposes only. It is not drawn to scale. Any measurements, floor areas (including any total floor area), openings and orientation are approximate. No details are guaranteed, they cannot be relied upon for any purpose and they do not form part of any agreement. No liability is taken for any error, omission or misstatement. A party must rely upon its own inspection(s). Powered by www.focalagent.com



view this property online williamhbrown.co.uk/Property/KLN119445



welcome to

Adam Close, King's Lynn

- Located Close to the Queen Elizabeth Hospital
- End of Terrace House
- Three Bedrooms
- Spacious Lounge
- Kitchen/Breakfast Room

Tenure: Freehold EPC Rating: C
Council Tax Band: B

offers in excess of

£244,900



Please note the marker reflects the
postcode not the actual property

view this property online williamhbrown.co.uk/Property/KLN119445



Property Ref:
KLN119445 - 0005

1. MONEY LAUNDERING REGULATIONS Intending purchasers will be asked to produce identification documentation at a later stage and we would ask for your co-operation in order that there is no delay in agreeing the sale. 2. These particulars do not constitute part or all of an offer or contract. 3. The measurements indicated are supplied for guidance only and as such must be considered incorrect. Potential buyers are advised to recheck measurements before committing to any expense. 4. We have not tested any apparatus, equipment, fixtures or services and it is in the buyers interest to check the working condition of any appliances. 5. Where an EPC, or a Home Report (Scotland only) is held for this property, it is available for inspection at the branch by appointment. If you require a printed version of a Home Report, you will need to pay a reasonable production charge reflecting printing and other costs. 6. We are not able to offer an opinion either written or verbal on the content of these reports and this must be obtained from your legal representative. 7. Whilst we take care in preparing these reports, a buyer should ensure that his/her legal representative confirms as soon as possible all matters relating to title including the extent and boundaries of the property and other important matters before exchange of contracts.

William H Brown is a trading name of Sequence (UK) Limited which is registered in England and Wales under company number 4268443, Registered Office is Cumbria House, 16-20 Hockliffe Street, Leighton Buzzard, Bedfordshire, LU7 1GN. VAT Registration Number is 500 2481 05.



william h brown



01553 771337



KingsLynn@williamhbrown.co.uk



40-42 King Street, KING'S LYNN, Norfolk, PE30 1ES



williamhbrown.co.uk