

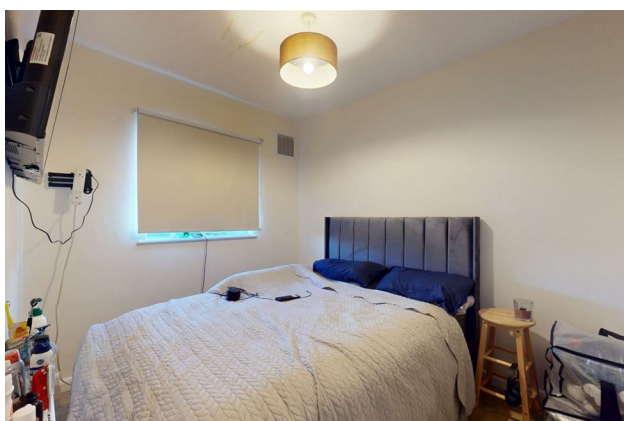
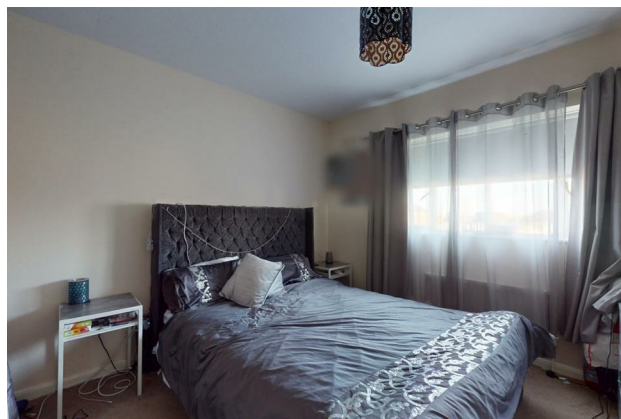
HUNTERS®

HERE TO GET *you* THERE

27 Grieves Road, Northfleet, Gravesend, DA11 7JQ

Asking Price £425,000

Property Images



HUNTERS[®]

HERE TO GET *you* THERE

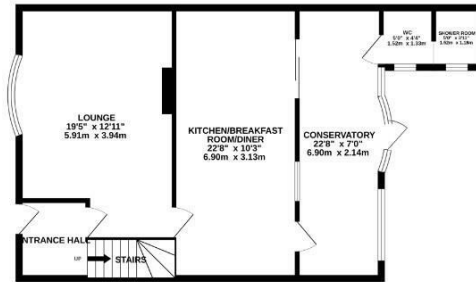
Property Images



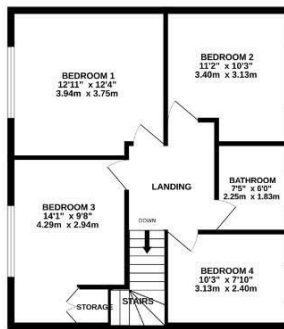
HUNTERS®

HERE TO GET *you* THERE

GROUND FLOOR
727 sq.ft. (67.6 sq.m.) approx.



1ST FLOOR
612 sq.ft. (56.9 sq.m.) approx.

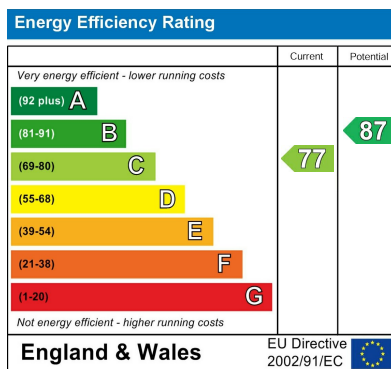


GRIEVES ROAD, NORTHFLEET, GRAVESEND, DA11

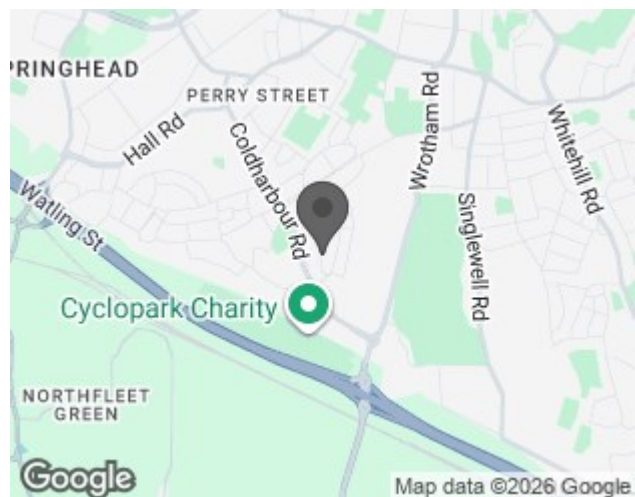
TOTAL FLOOR AREA - 1339 sq.ft. (124.4 sq.m.) approx.

While every attempt has been made to ensure the accuracy of the floorplan contained here, measurements of doors, windows, rooms and any other items are approximate and no responsibility is taken for any errors, omissions or mis-statement. This plan is for illustration purposes only and should be used as such by any prospective purchaser. The services, systems and appliances shown have not been tested and no guarantee as to their operability or efficiency can be given.
Made with Microsoft VISIO

EPC



Map



Details

Type: House - Mid Terrace Beds: 4 Bathrooms: 2 Receptions: 1 Tenure: Freehold

Summary

Nestled in the area of Northfleet, Gravesend, this delightful four bedroom mid-terrace house on Grieves Road offers a great opportunity for those seeking their next move.

Upon entering, you are welcomed into a spacious reception room that provides a warm and inviting atmosphere, followed by the open plan kitchen/diner, conservatory, shower room and WC.

Meanwhile the first floor boasts four well-proportioned bedrooms and a modern family bathroom.

Located in a vibrant community, this property is conveniently situated near local amenities, schools, and transport links, making it an excellent choice for those who commute or enjoy the convenience of nearby shops and services.

Additional benefits includes a front and rear garden, a garage which could be used for extra storage space.

This home offers great living space for a growing family and we strongly recommend arranging a viewing to avoid missing out!

Features

- IDEAL FOR A GROWING FAMILY • FOUR BEDROOMS • LOUNGE • OPEN PLAN KITCHEN/DINER • GARAGE • GARDEN • DOWNSTAIRS SHOWER ROOM AND WC • EPC RATING C