



140 Fred Ackland Drive, King's Lynn PE30 4DL

£189,995

2 1 1

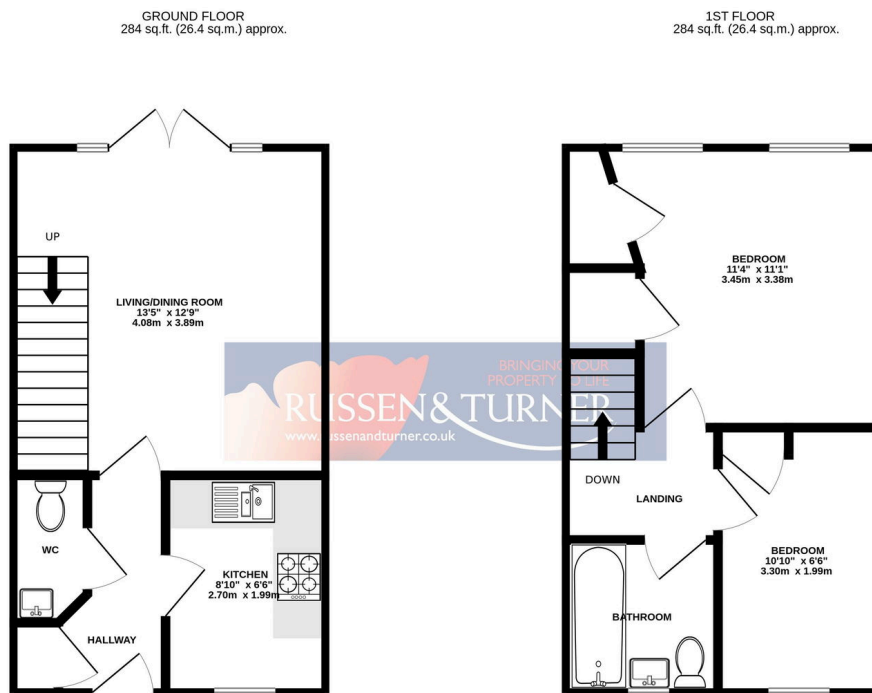


Looking for your first step onto the property ladder? Or perhaps a smart addition to an expanding investment portfolio? If so, this beautifully presented two-bedroom end-of-terrace home could be exactly what you've been waiting for. Ideally located close to the Queen Elizabeth Hospital, this turn-key property offers modern, low-maintenance living in a highly convenient setting. With gas central heating, allocated parking and a thoughtfully designed rear garden, it ticks all the right boxes for both first-time buyers and savvy investors alike.



Key Features

- End of Terrace House
- Wonderful Presentation - Move in Ready
- Gas Central Heating
- Allocated Parking
- Low Maintenance Rear Garden
- Two Bedrooms
- Sought After Location - Close to the Hospital
- Ideal First Home
- Potential Investment Opportunity
- Modern Kitchen and Bathroom



TOTAL FLOOR AREA: 568 sq.ft. (52.7 sq.m.) approx.

Whilst every attempt has been made to ensure the accuracy of the floorplan contained here, measurements of doors, windows, rooms and any other items are approximate and no responsibility is taken for any error, omission or mis-statement. This plan is for illustrative purposes only and should be used as such by any prospective purchaser. The services, systems and appliances shown have not been tested and no guarantee as to their operability or efficiency can be given.
Made with Metropix ©2026

