



6 Marley Close, Battle

£375,000 Freehold

Just a short walk to the station, this well-balanced home combines strong practical features with stylish living. A beautifully finished kitchen, en-suite main bedroom, ample driveway parking and generous front and rear gardens create a home that works on every level.



01424 772954
info@ashtonstripp.co.uk
33 High Street,
Battle,
TN33 0EH



Tucked away in Marley Close, this home offers a calm, well-connected setting with an easy walk through to the station, making day-to-day living feel both practical and relaxed. Inside, the layout flows naturally, with light moving through the house from multiple aspects and a consistent finish underfoot that ties the ground floor together.

The main living spaces stretch the full depth of the house, giving a real sense of space and connection to the garden. To the left, the sitting room enjoys a window to the front and doors opening directly onto the garden at the rear, creating a bright, through-room feel and an easy link outside.

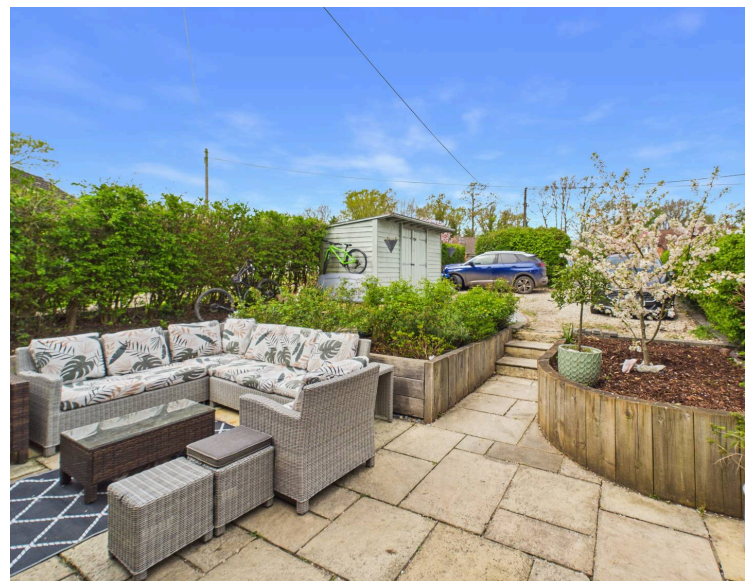
Running the full depth alongside, the kitchen/dining room is designed with both everyday living and entertaining in mind. A central island anchors the space, comfortably seating eight and creating a natural gathering point for family life or hosting. Navy wall and base units are paired with glacier marble-effect compact laminate worktops, with an inset composite sink and integrated dishwasher keeping the finish clean and streamlined. There's space for a fridge/freezer, a gas four-ring cooker, and generous storage throughout. Windows on three sides bring in light from morning through to evening, while doors opening to the garden extend the space outdoors during warmer months. The continuation of the wood-effect flooring enhances the sense of flow across the ground floor.

Upstairs, a bright landing with wood-effect flooring leads to all three bedrooms. To the front, the first bedroom is a comfortable double, finished with grey carpet and spotlights, offering a pleasant outlook and a practical layout. The second bedroom sits to the rear and is the larger of the two, also a generous double, with views over the garden and similar finishes, making it a versatile and well-proportioned room. At the end of the hall, the main bedroom overlooks the garden and provides a good-sized double room with its own en-suite.

The en-suite is fully tiled in a soft cream finish with a mosaic detail, featuring a rainfall shower, wall-mounted fittings, WC, basin, and chrome towel rail, all finished with spot lighting.

The family bathroom is fitted with stone-coloured tiling around the bath, with a shower over including both rainfall and handheld attachments, complemented by black fittings. A square basin with storage beneath, corner WC, and a glass screen with black trim give a clean, modern feel, along with a useful built-in storage cupboard.

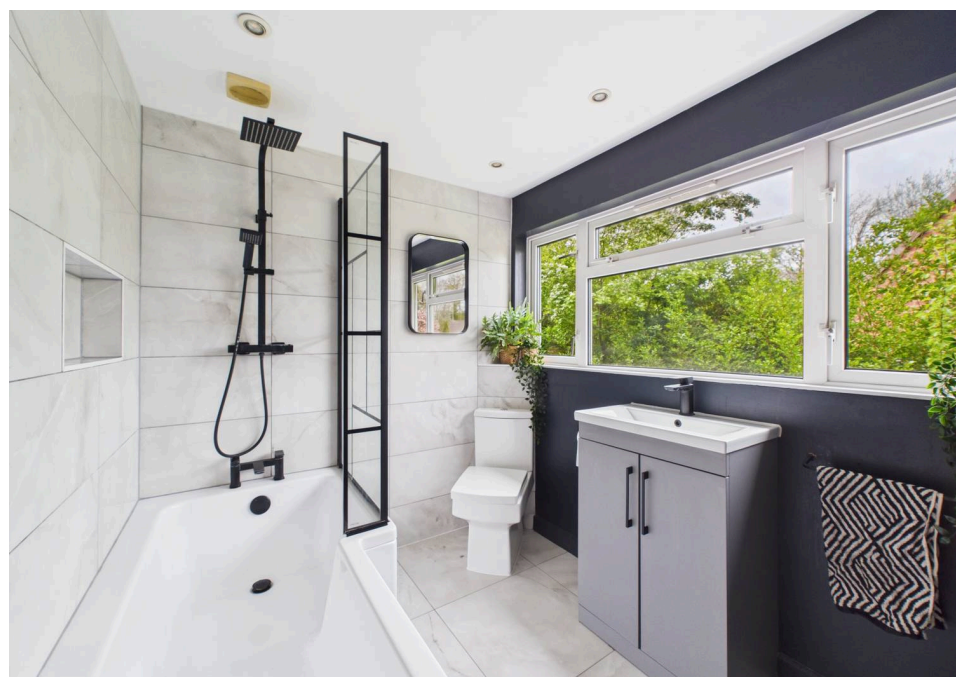
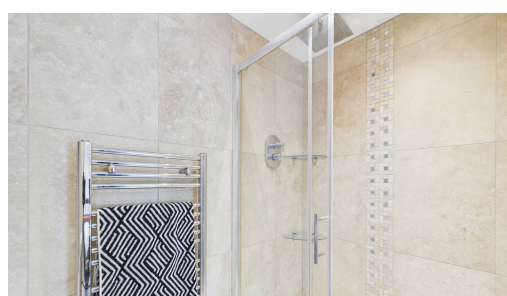
Outside, the garden offers a mix of spaces to enjoy, with a patio area leading onto a generous lawn, a decked seating area, and a garden shed. To the front, a large gravel driveway provides parking for several vehicles, with planted borders softening the approach and an additional patio area set slightly below.



- Kitchen/dining room running full depth with central island seating six
- Triple-aspect kitchen with doors opening directly onto the garden
- Living room spanning front to back with garden access
- Three well-proportioned bedrooms
- Main bedroom with en-suite shower room
- Contemporary family bathroom
- Generous rear garden with patio, lawn and decked area
- Gravel driveway providing parking for multiple vehicles
- Easy walk to Battle station via cut-through with regular London services
- Good access to Battle High Street, local schools and countryside walks



Marley Close is well positioned for access into Battle, with a handy cut-through providing an easy walk to the station, offering regular services into London. The town itself has a good mix of independent shops, cafés, and everyday essentials, along with well-regarded local schools nearby. Surrounded by countryside, there are also plenty of walking routes and green spaces close at hand, making it a location that balances convenience with a quieter, more relaxed setting.





Floor 0

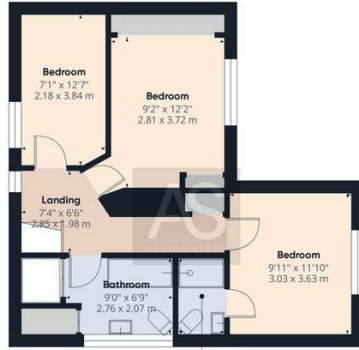
Approximate total area⁽¹⁾

991 ft²
92.2 m²

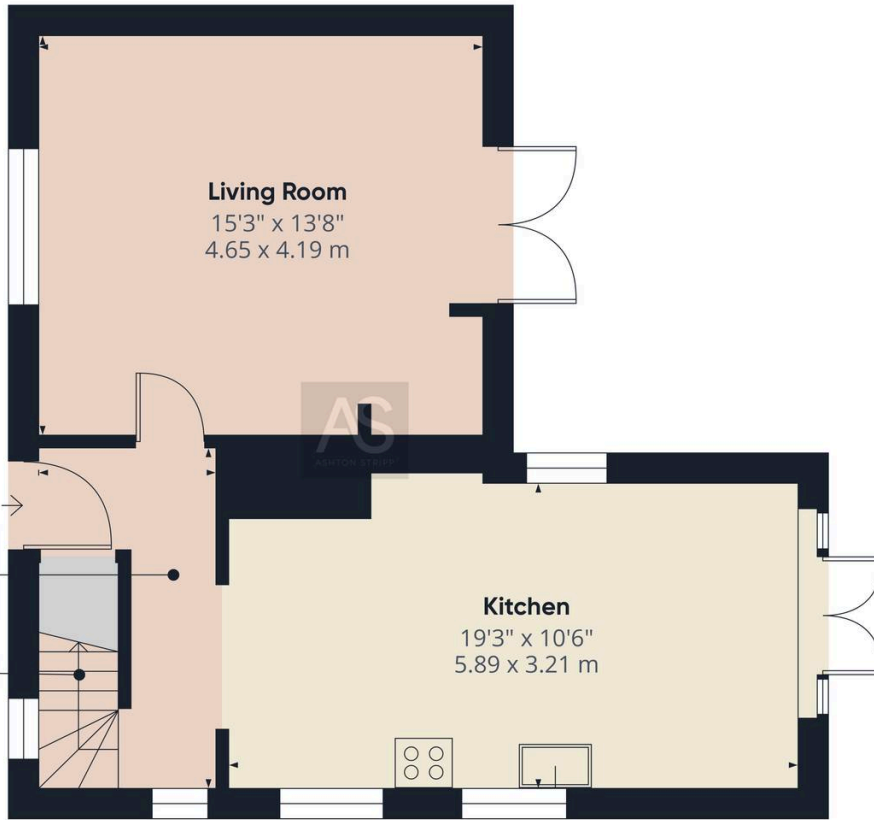
(1) Excluding balconies and terraces

Calculations reference the RICS IPMS 3C standard. Measurements are approximate and not to scale. This floor plan is intended for illustration only.

GIRAFFE 360



Floor 1



Floor 0

Approximate total area⁽¹⁾

494 ft²
45.9 m²

(1) Excluding balconies and terraces

Calculations reference the RICS IPMS 3C standard. Measurements are approximate and not to scale. This floor plan is intended for illustration only.

GIRAFFE 360

