



TO LET

London Road, Westcliff-On-Sea SS0 9FA

£1,395 PCM Deposit Required - £1,609 Council Tax Band - C

- One Bedroom Flat
- Second Floor With Lift Access
- Modern Apartment Block
- Modern Kitchen
- Large Open Plan Living/Dining Room
- South Facing Balcony With Views Over Chalkwell Park
- En-Suite Shower Room
- Good Size Family Bathroom
- Available Now
- Call To Arrange A Viewing

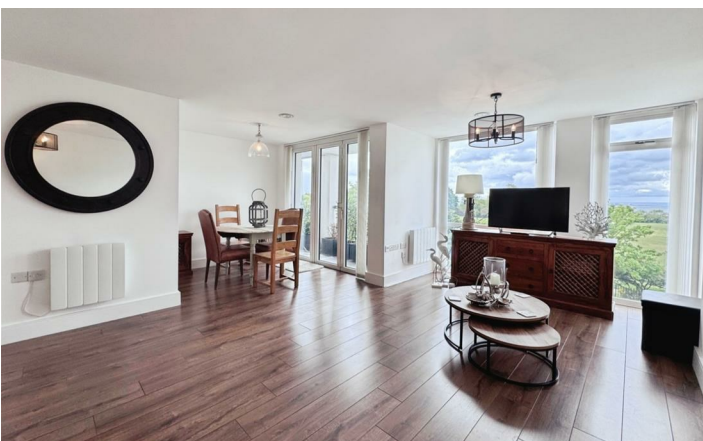
Appointmoor Rental
72 The Ridgeway, Chalkwell, Westcliff, Essex, SS0 8NU
T. 01702 719 966 W. appointmoor.co.uk

appointmoor

Description

Situated on London Road in the charming Westcliff-On-Sea, this second floor apartment boasts a delightful open plan living space with dining area. This recently built apartment features an ultra modern kitchen with integrated appliances including a fridge freezer and dishwasher. The double bedroom offer access to the south facing balcony area, inviting you to enjoy the view across Chalkwell Park. The bedroom benefits from a modern en-suite shower and the family bathroom is a great place to relax.

Residents have access to a beautiful roof terrace where you can enjoy the stunning views over Chalkwell Park with Estuary views. Located within walking distance to Chalkwell Station, commuting is a breeze, making this property not only beautiful but also conveniently situated and has allocated parking for one car.



Energy Efficiency Rating	Current	Potential
Very energy efficient - lower running costs		
(92 plus) A		
(81-91) B		
(69-80) C		
(55-68) D		
(39-54) E		
(21-38) F		
(1-20) G		
Not energy efficient - higher running costs		
England & Wales	82	82
	EU Directive 2002/91/EC	

Environmental Impact (CO ₂) Rating	Current	Potential
Very environmentally friendly - lower CO ₂ emissions		
(92 plus) A		
(81-91) B		
(69-80) C		
(55-68) D		
(39-54) E		
(21-38) F		
(1-20) G		
Not environmentally friendly - higher CO ₂ emissions		
England & Wales		
	EU Directive 2002/91/EC	

AGENTS NOTES: Every care has been taken with the preparation of these particulars, but complete accuracy cannot be guaranteed. If there is any point, which is of particular importance to you, please obtain professional confirmation. Alternatively, we will be pleased to check the information for you. All measurements quoted are approximate. Floor plans are not to scale. The Fixtures, Fittings & Appliances have not been tested and therefore no guarantee can be given that they are in working order. Photographs are reproduced for general information, and it cannot be inferred that any item shown is included in the sale.

VIEWINGS: BY APPOINTMOOR ESTATES ONLY