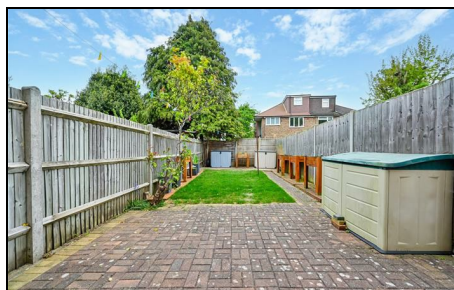


## Runnymede Colliers Wood, SW19 2PG

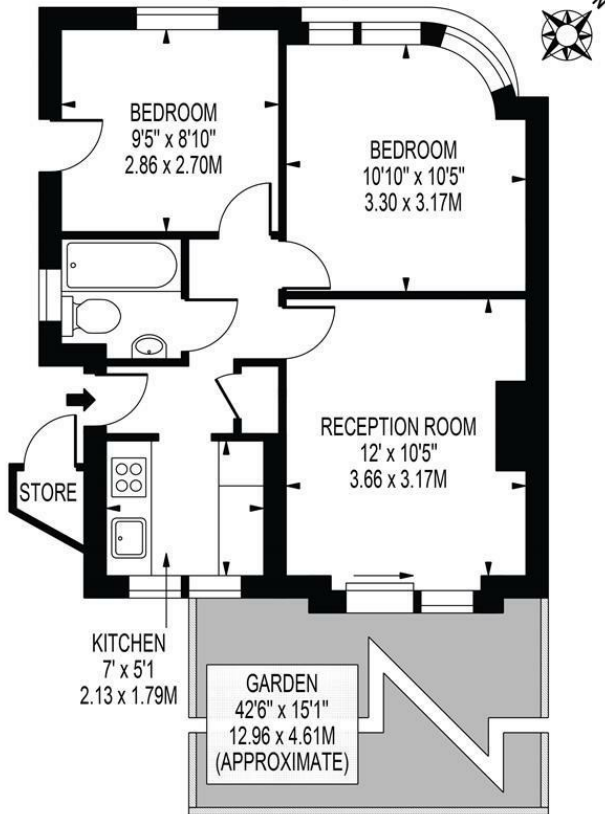
£400,000 Leasehold



A beautifully presented two double bedroom ground floor maisonette with private garden and off street parking for three cars. This gorgeous property is located a short walk to both South Wimbledon and Colliers Wood stations (Northern line), along with the amenities at Merton Abbey Mills and the River Wandle. The property consists of a long lease, modern fitted kitchen and bathroom, two double bedrooms and reception room with access to the private garden with patio area. Properties of this quality are very rare to the market and booking a viewing early is well advised.

## RUNNYMEDE

APPROXIMATE GROSS INTERNAL FLOOR AREA: 458 SQ FT - 42.53 SQ M  
(EXCLUDING STORE)



### GROUND FLOOR

FOR ILLUSTRATION PURPOSES ONLY

THIS FLOOR PLAN SHOULD BE USED AS A GENERAL OUTLINE FOR GUIDANCE ONLY AND DOES NOT CONSTITUTE IN WHOLE OR IN PART AN OFFER OR CONTRACT. ANY INTENDING PURCHASER OR LESSEE SHOULD SATISFY THEMSELVES BY INSPECTION, SEARCHES, ENQUIRIES AND FULL SURVEY AS TO THE CORRECTNESS OF EACH STATEMENT. ANY AREAS, MEASUREMENTS OR DISTANCES QUOTED ARE APPROXIMATE AND SHOULD NOT BE USED TO VALUE A PROPERTY OR BE THE BASIS OF ANY SALE OR LET.

- Ground Floor Maisonette
- Two Double Bedrooms
- Lovely Private Garden
- Well Presented
- Off Street Parking
- Long Lease
- EPC Rating : D
- Merton Council Tax Band : C
- Lease ; 189 Years From 25 March 1977
- Buildings Insurance : £647.33 (2026)



Energy Efficiency Rating		Current	Potential
Very energy efficient - lower running costs			
(92 plus)	A		
(81-91)	B		
(69-80)	C		
(55-68)	D	64	74
(39-54)	E		
(21-38)	F		
(1-20)	G		
Not energy efficient - higher running costs			
England & Wales		EU Directive 2002/91/EC	

For Free Mortgage Quote and Best Mortgage Rates, call an Ellisons Mortgage Advisor on 020 8544 0518



Although these particulars are believed to be correct, their accuracy is not guaranteed and they do not form part of any contract.

Celebrating 30 years of successful Sales and Lettings in Merton

