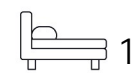


Living  
made  
better

Eddington Court  
Canning Town, E16 1GW



Price Guide £335,000

# Eddington Court, Canning Town, E16 1GW

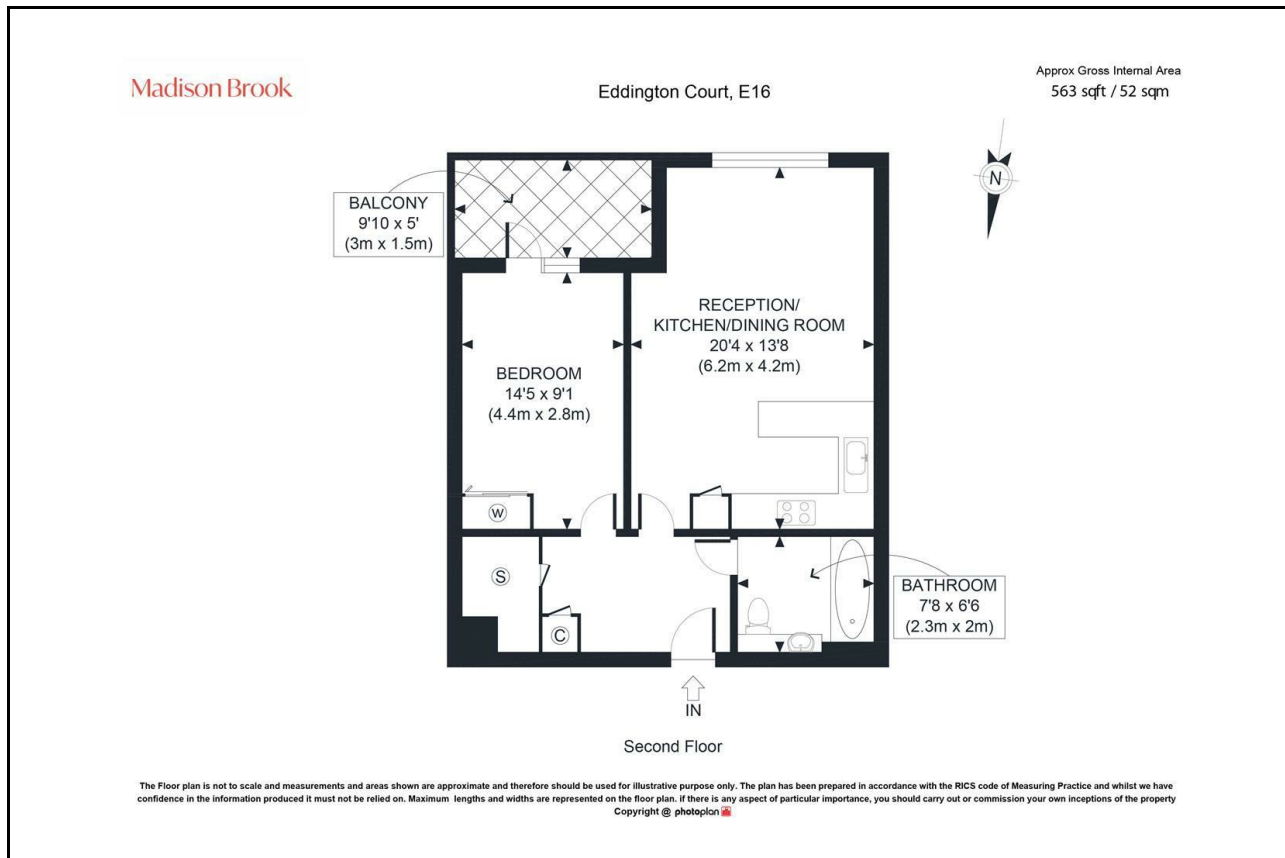
Madison Brook

## Property Summary

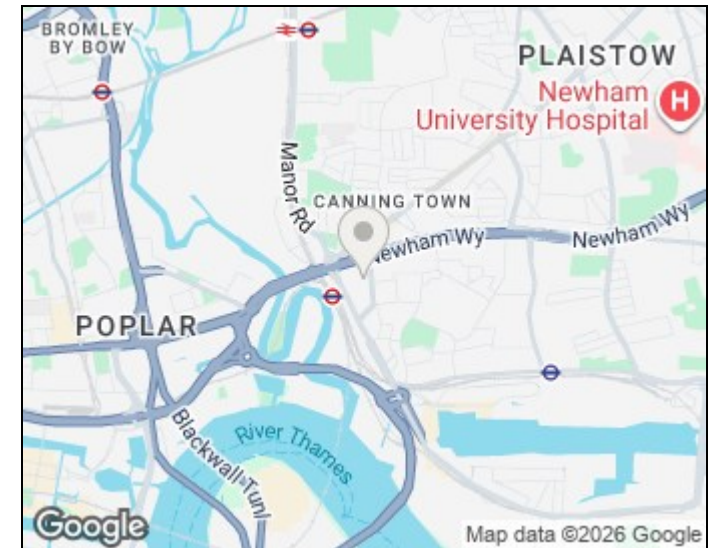
A beautifully presented chain free one-bedroom apartment located on the second floor of the sought-after Hallsville Quarter development. Offering approximately 563 sq ft of stylish accommodation, the property features a spacious 20ft open-plan reception, kitchen and dining room, generous double bedroom, contemporary bathroom, excellent storage and a private balcony. Ideally positioned just moments from Canning Town Underground and DLR Station, residents enjoy outstanding transport links alongside an excellent selection of shops, supermarkets, cafés and restaurants. Offered with a 997-year lease, this is an ideal purchase for first-time buyers, professionals or investors.

Lease Length: 997 Years | Ground Rent: £200 pa | Service Charge: £3,000 pa

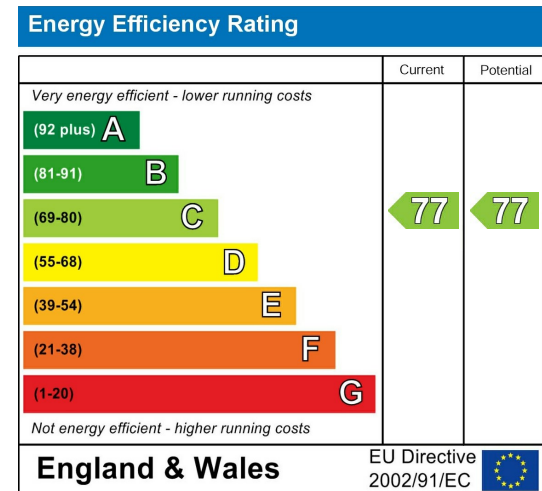
## Floorplan



## Area Map



## Energy Efficiency Graph



Unit B 20 Western Gateway, Royal Victoria  
Dock, London, E16 1BS  
Tel: 020 3946 6000 Email:  
docklands@madisonbrook.com  
<https://madisonbrook.com/>

These particulars, whilst believed to be accurate are set out as a general outline only for guidance and do not constitute any part of an offer or contract. Intending purchasers should not rely on them as statements of representation of fact, but must satisfy themselves by inspection or otherwise as to their accuracy. No person in this firm's employment has the authority to make or give any representation or warranty in respect of the property.