



Alston Road, SW17

£1,050,000

Dexters



Alston Road, SW17

An impeccable home that has been lovingly extended retaining a generous plot with four generous double bedrooms, three bathrooms, an un-matched open plan/kitchen reception room, bifolding doors opening onto a private garden, off-street parking and a generous footprint overall.

Inviting you in via a charming exterior with space for multiple cars via the driveway, the property opens onto a front reception room with a comfortable seating area, with the heart of the home at the rear. A stunning fitted kitchen with wall and base units, solid worktops, integrated appliances and exposed brickwork offers an unrivalled living experience with ample space for seating and dining. Bifolding doors open onto a fully landscaped rear garden with mature plants and secluded seating area.

Over the first and top floors, there are four generous double bedrooms and three bathrooms with the principal and a further bedroom furnished with an en-suite and no shortage of storage solutions.

Alston Road represents a very close knit community of homes positioned moments from the vast amenities of Tooting, Earlsfield and Wimbledon town centres with Tooting Broadway Tube station a short walk away. The vast green open spaces of Wimbledon & Tooting Bec Common are also nearby.

Features

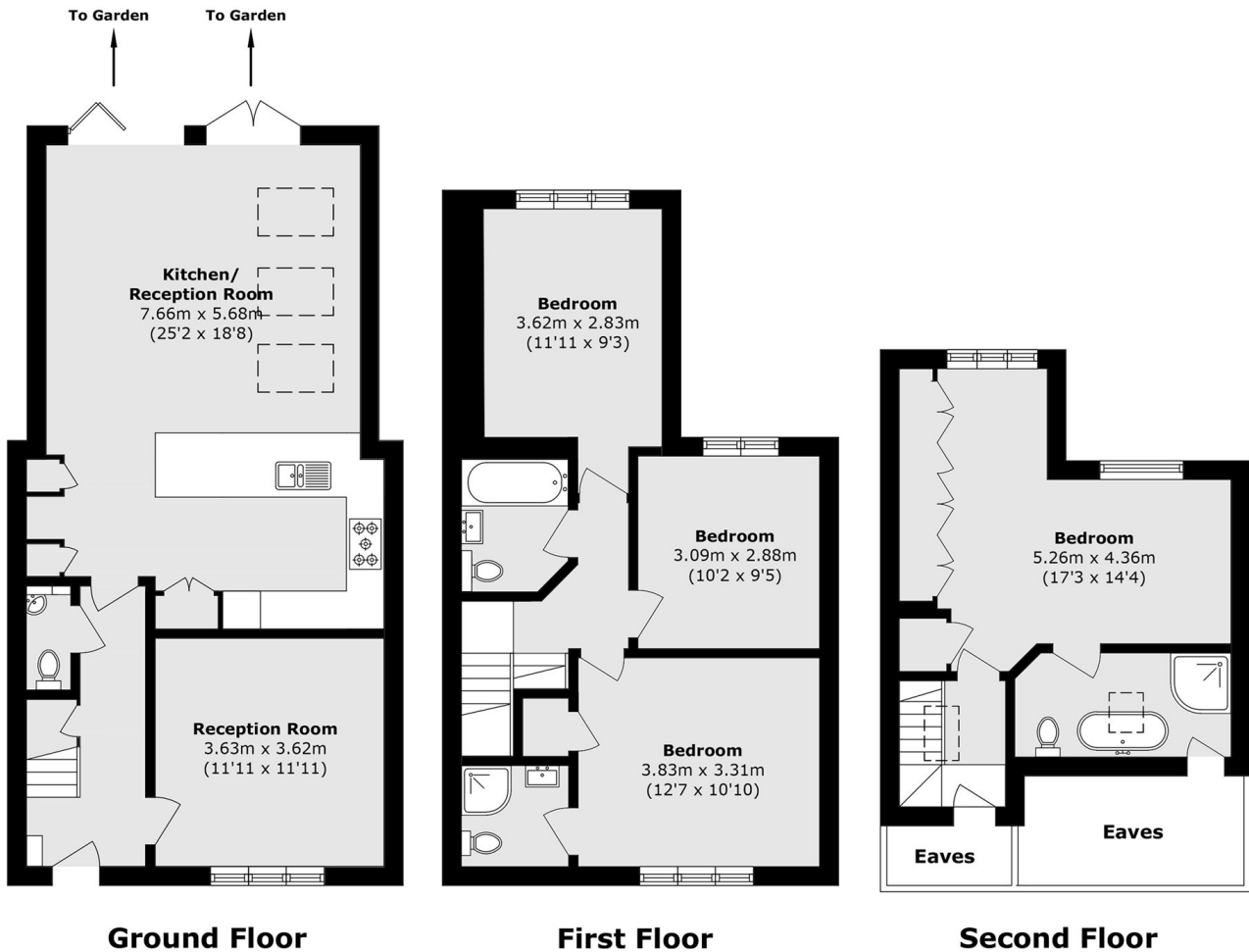
- Four Double Bedrooms
- Off-Street Parking
- Three Bathrooms
- Fitted Kitchen
- Landscaped Garden
- Immaculate Interior







Alston Road, London, SW17



Total area (approx.): 139.5 sq. m (1501.5 sq. ft)
(Excluding Eaves)