



MILE



Grove Park, London £2,850 pcm %tenure%

Mile Estates are pleased to offer this beautifully presented three-bedroom apartment located within the popular Sherrans House development in Grove Park, NW9.

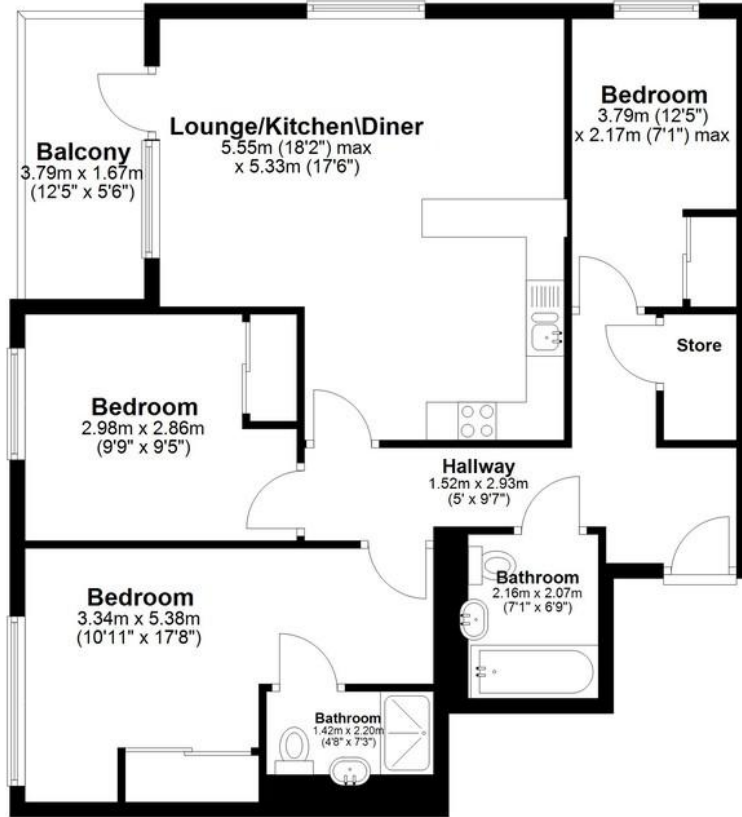
The property offers bright and spacious accommodation throughout, featuring a modern open-plan reception room and fully fitted kitchen, creating an ideal living and entertaining space. The reception room leads directly onto a private balcony, perfect for enjoying outdoor space.

There are three generously sized bedrooms, including a principal bedroom with an en-suite shower room, as well as a

- Three spacious bedrooms
- Modern open-plan living and kitchen area
- Private balcony
- Contemporary family bathroom
- Excellent location close to transport links and local amenities
- Bright and spacious accommodation throughout
- Lift access
- Ample storage space
- Available 7th September
- Epc rating B

Fourth Floor

Approx. 81.0 sq. metres (871.8 sq. feet)
(excluding Balcony)



Total area: approx. 81.0 sq. metres (871.8 sq. feet)

This floor plan has been created by a third party and should be used as a general outline for guidance only. Any areas, measurements or distances quoted are approximate and any intending purchaser or lessee should satisfy themselves by inspection, searches, enquiries and/or full survey as to the correctness of each statement. We accept no responsibility or liability for any loss whatsoever that may arise as a result of this plan and the information contained within.

© @modephoto | www.modephoto.co.uk
Plan produced using PlanUp.

Grove Park

MONEY LAUNDERING REGULATIONS 2003: Intending purchasers will be asked to produce identification documentation at a later stage and we would ask for your co-operation in order that there will be no delay in agreeing the sale.

General: While we endeavour to make our sales particulars fair, accurate and reliable, they are only a general guide to the property and, accordingly, if there is any point which is of particular importance to you, please contact the office and we will be pleased to check the position for you, especially if you are contemplating travelling some distance to view the property.

Measurements: These approximate room sizes are only intended as general guidance. You must verify the dimensions carefully before ordering carpets or any built-in furniture.

Services: Please note we have not tested the services or any of the equipment or appliances in this property, accordingly we strongly advise prospective buyers to commission their own survey or service reports before finalising their offer to purchase.