

# Location



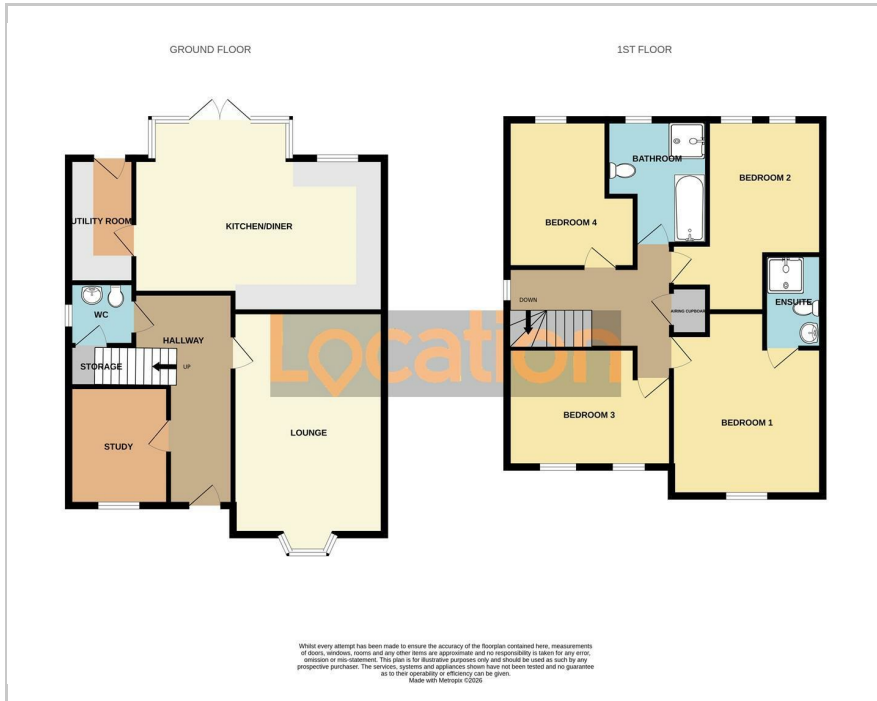
34 Mountain Hare Mews, Sutton-In-Ashfield, NG17 3PA

Offers Over £390,000

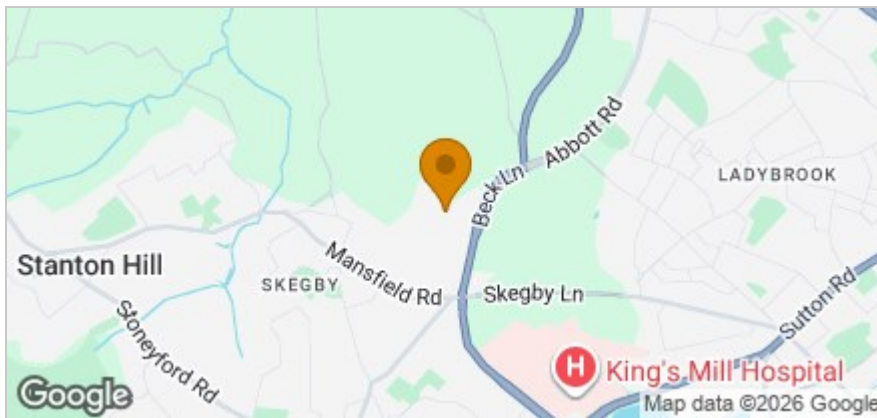


PLEASE BE  
COURTEOUS  
THIS HOUSE  
IS OCCUPIED

## Floor Plan



## Area Map



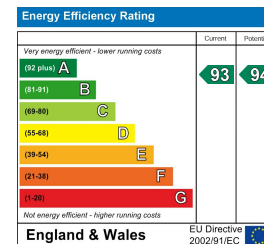
## Accommodation

- Modern detached Holden house style built by David Wilson Homes.
- Kitchen-diner with French doors to garden
- Utility Room and Study
- Main bedroom with en suite
- Four Piece Family Bathroom
- Driveway and garage to the side
- EPC rating A with solar photovoltaic panels & EV Charger
- Excellent transport links to the A38 & Kings Mill Hospital
- Genuine Reason For Sale

## Viewing

Please contact our Mansfield Sales Office on 01623654555 if you wish to arrange a viewing appointment for this property or require further information.

## Energy Efficiency Graph



These particulars, whilst believed to be accurate are set out as a general outline only for guidance and do not constitute any part of an offer or contract. Intending purchasers should not rely on them as statements of representation of fact, but must satisfy themselves by inspection or otherwise as to their accuracy. No person in this firm's employment has the authority to make or give any representation or warranty in respect of the property.

13-15 Albert Street, Mansfield, NG18 1EA

Tel: 01623654555 Email: enquires@locationmansfield.co.uk www.locationstateagency.co.uk