

Farrow Lane, SE14

£315,000

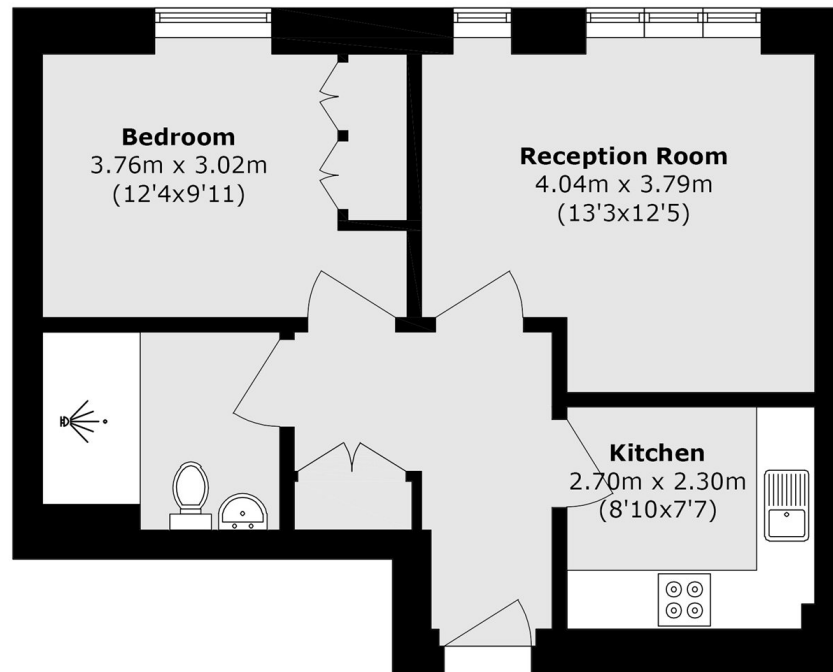
Situated on the top floor, this spacious flat offers a great amount of living space and is presented in good condition throughout. The property benefits from a newly fitted shower room and a large separate kitchen with plenty of storage and worktop space. Bright and well laid out, the flat provides comfortable living with generously sized rooms and is ready to move straight into.

Highbridge Court occupies a convenient position on Farrow Lane in Avonley Village, just off Avonley Road. Ideally located for commuters, the property is within easy walking distance of New Cross Gate Underground and National Rail stations, while numerous local and City/West End bus routes are available on nearby New Cross Road. A diverse range of cafés, bars, restaurants, and shops can be found close by, creating a lively and well-connected neighbourhood.

Features

- One Bedroom Apartment
- Top Floor
- Chain Free
- Newly Fitted Shower Room
- Close To Transport Links

Farrow Lane, London, SE14



Total area (approx.): 45.0 sq. m (484.4 sq. ft)