





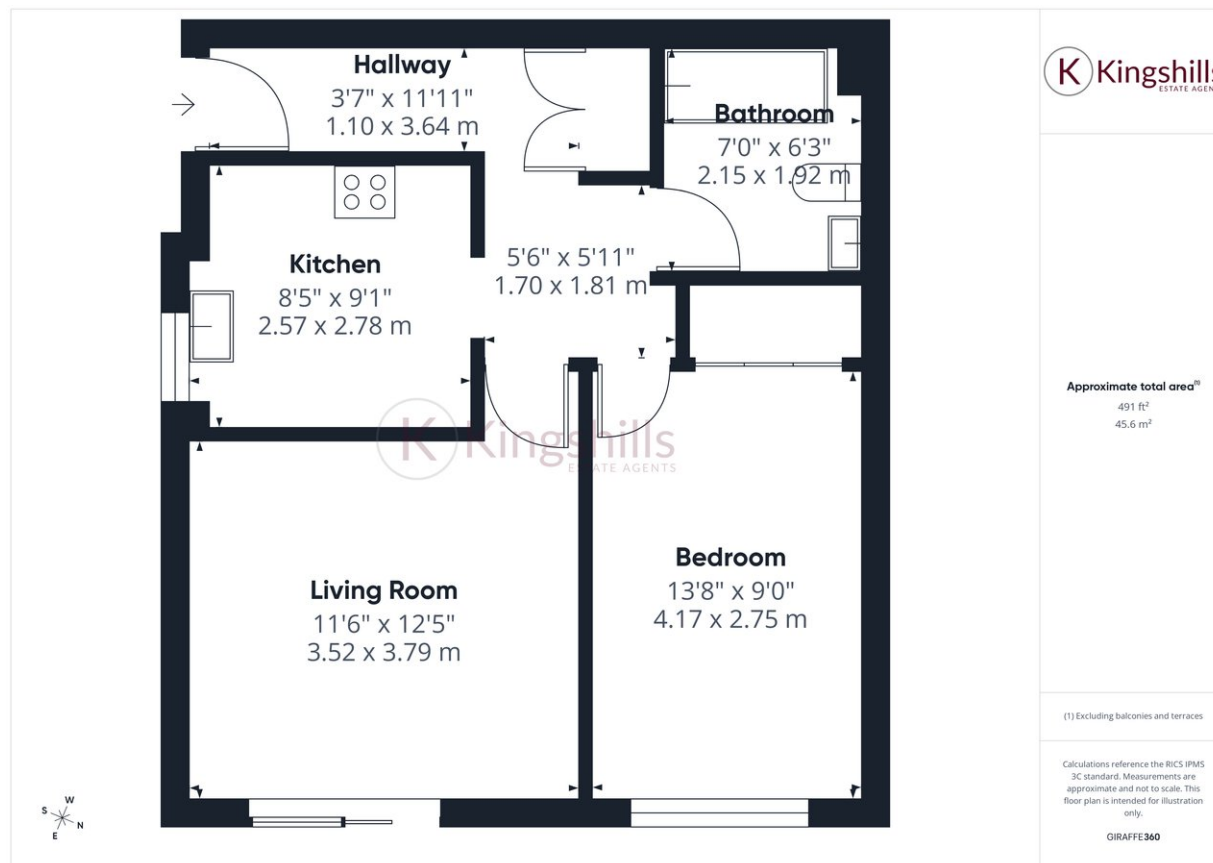
## Property Description

This beautifully presented one-bedroom apartment offers a fantastic blend of style and practicality. The property benefits from an extended lease, rear parking, and convenient ground-floor access to the rear. The living room opens directly onto a communal grassed area, which is partially enclosed, creating a pleasant outdoor outlook and a more private feel than typically expected.

The generous bedroom features built-in wardrobes and comfortably accommodates both a double bed and a dedicated home-office workspace, ideal for modern living. Storage is often a key consideration in one-bedroom apartments, and this property excels, offering an abundance of well-thought-out storage throughout.

Completing the home is a modern kitchen and bathroom, both finished to a stylish standard, ensuring the apartment is ready to move into. This is an excellent opportunity for first-time buyers, downsizers, or investors.

The property is located on the east side of High Wycombe in Buckinghamshire. Loudwater benefits from excellent transport links, with Junction 3 of the M40 close by and both High Wycombe and Beaconsfield just a short drive away, offering a wide range of shops, services, and rail connections.



Kingshills Estate Agents  
C1C Comet Studios  
Amersham  
Buckinghamshire  
HP7 0PX

01494 939868  
hello@kingshills.co.uk  
kingshills.co.uk

Agents Note: Whilst every care has been taken to prepare these particulars, they are for guidance purposes only. All measurements are for general guidance purposes only and whilst every care has been taken to ensure accuracy, they should not be relied upon and potential buyers/tenants are advised to recheck the measurements