



## Queens Terrace, Filey, YO14 9LR

- Terraced House
- Central Location
- No Onward Chain
- Three Bedrooms
- Rear yard
- EPC Grade - D

**Asking Price £160,000**



# Queens Terrace, Filey, YO14 9LR

## DESCRIPTION

Hunters are delighted to bring to the market this well-presented three-bedroom terraced home, situated on the popular Queens Terrace in the heart of Filey. Offering spacious accommodation throughout and conveniently located within easy reach of the town centre, beach, train station and local amenities, this property would make an ideal family home, coastal retreat or investment opportunity.

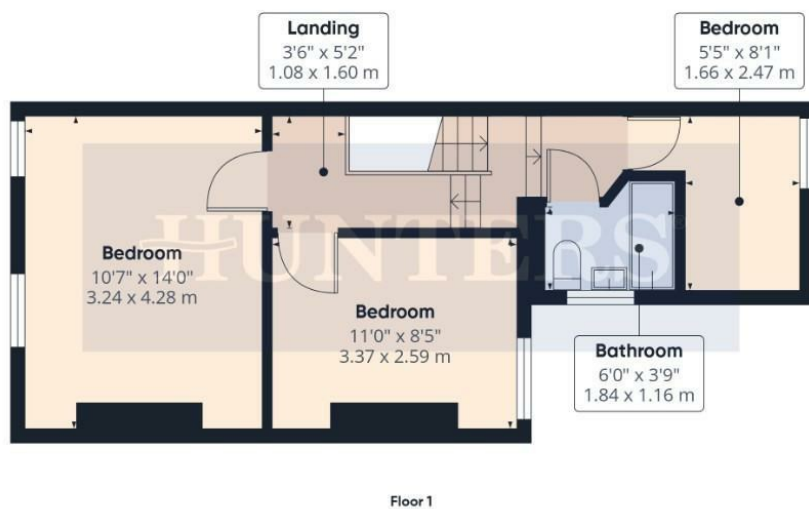
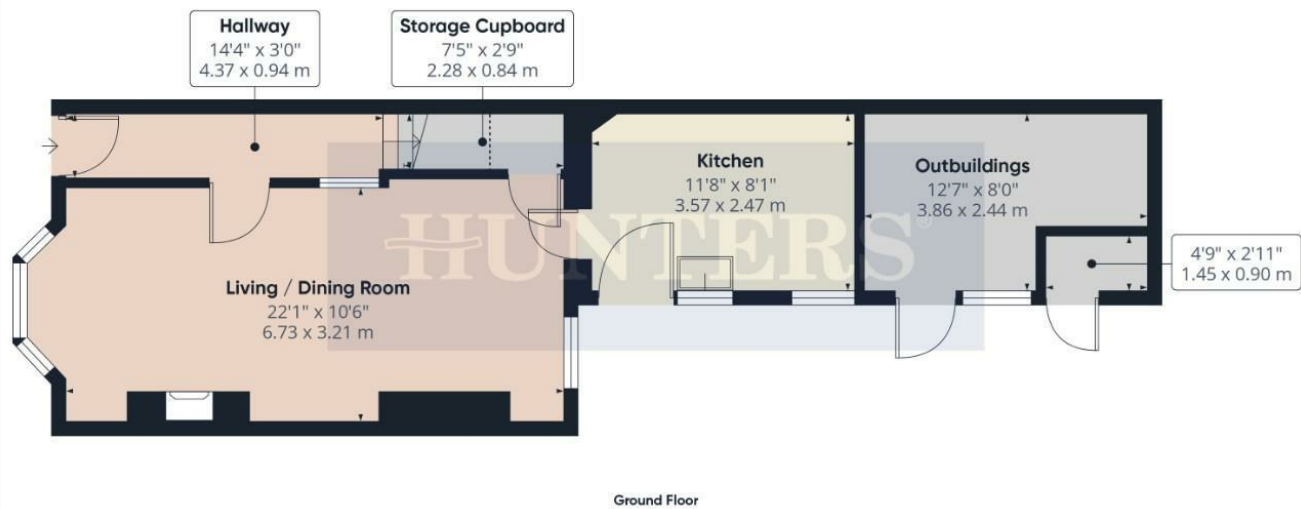
The accommodation briefly comprises an entrance hallway leading into a generous bay-fronted living room, creating a bright and welcoming space to relax and entertain. The room is of an excellent size and comfortably accommodates both living and dining furniture, making it the ideal hub of the home for everyday family life and hosting guests. To the rear of the property is a fitted kitchen offering a range of wall and base units and ample workspace. Beyond the kitchen is a private enclosed yard, which benefits from a useful outdoor storage room, ideal for storing bicycles, tools, garden furniture or household items.

To the first floor are three well-proportioned bedrooms, including a spacious principal bedroom and two further bedrooms suitable for family members, guests or those working from home. A family bathroom completes the accommodation.

Combining generous living space, practical storage and a highly sought-after location close to the coast, this property offers a fantastic opportunity for a wide range of purchasers. Early viewing is highly recommended to fully appreciate all that this home has to offer.







**Viewings**

Please contact [filey@hunters.com](mailto:filey@hunters.com), if you wish to arrange a viewing appointment for this property or require further information.

**Valuations**

For a valuation of your property, please email the team with your property details, contact information and the times you are available.



**Approximate total area<sup>(1)</sup>**  
871 ft<sup>2</sup>  
81 m<sup>2</sup>

**Reduced headroom**  
10 ft<sup>2</sup>  
0.9 m<sup>2</sup>

(1) Excluding balconies and terraces.

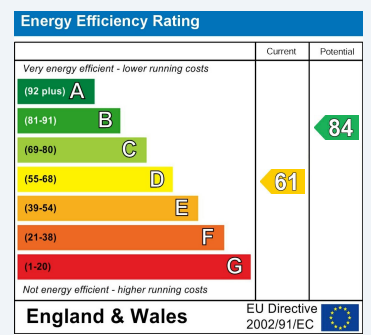
Reduced headroom  
----- Below 5 ft/1.5 m

Calculations reference the RICS IPMS 3C standard. Measurements are approximate and not to scale. This floor plan is intended for illustration only.

GIRAFFE360

**ENERGY PERFORMANCE CERTIFICATE**

The energy efficiency rating is a measure of the overall efficacy of a home. The higher the rating the more energy efficient the home is and the lower the fuel bills will be.



These particulars are intended to give a fair and reliable description of the property but no responsibility for any inaccuracy or error can be accepted and do not constitute an offer or contract. We have not tested any services or appliances (including central heating if fitted) referred to in these particulars and the purchasers are advised to satisfy themselves as to the working order and condition. If a property is unoccupied at any time there may be reconnection charges for any switched off/disconnected or drained services or appliances - All measurements are approximate.

**THINKING OF SELLING?** If you are thinking of selling your home or just curious to discover the value of your property, Hunters would be pleased to provide free, no obligation sales and marketing advice. Even if your home is outside the area covered by our local offices we can arrange a Market Appraisal through our national network of Hunters estate agents.



7a Murray Street, Filey, YO14 9DA  
Tel: 01723 338958 Email: [filey@hunters.com](mailto:filey@hunters.com) <https://www.hunters.com>

