

**Capital Interchange Way, Brentford TW**  
Offers In Excess Of £550,000 Leasehold







## Description

A beautifully appointed apartment within a contemporary development in Brentford's thriving Capital Interchange Quarter. This bright residence offers sophisticated open-plan living, a covered private balcony, and superb connectivity to central London, combining modern urban convenience with riverside charm.

Situated within the dynamic Capital Interchange Quarter, this elegant two-bedroom apartment at Lily House exemplifies contemporary London living at its finest. The development forms part of Brentford's remarkable transformation, where heritage meets modernity along the canal-side setting that has become one of West London's most sought-after residential locations.

This well-proportioned 813 square foot apartment features a thoughtfully designed open-plan living area that flows seamlessly onto a covered private balcony, offering an ideal space for year-round outdoor enjoyment with street-facing views across the development. Natural light fills the reception room, creating an inviting atmosphere perfect for both relaxation and entertaining. The apartment comprises two generous double bedrooms and two contemporary bathrooms, providing comfortable accommodation with modern finishes throughout.

- Covered private balcony
- Two modern bathrooms
- Contemporary open-plan living
- Secure residential development
- Excellent transport links
- 813 sq ft internal space
- Long lease remaining
- Concierge service available
- No onward chain
- EPC: B

# Floorplan

814 sq ft | 76 sq m

## Lily House, Tw8

Approximate Gross Internal Area = 75.6 sq m / 813.6 sq ft

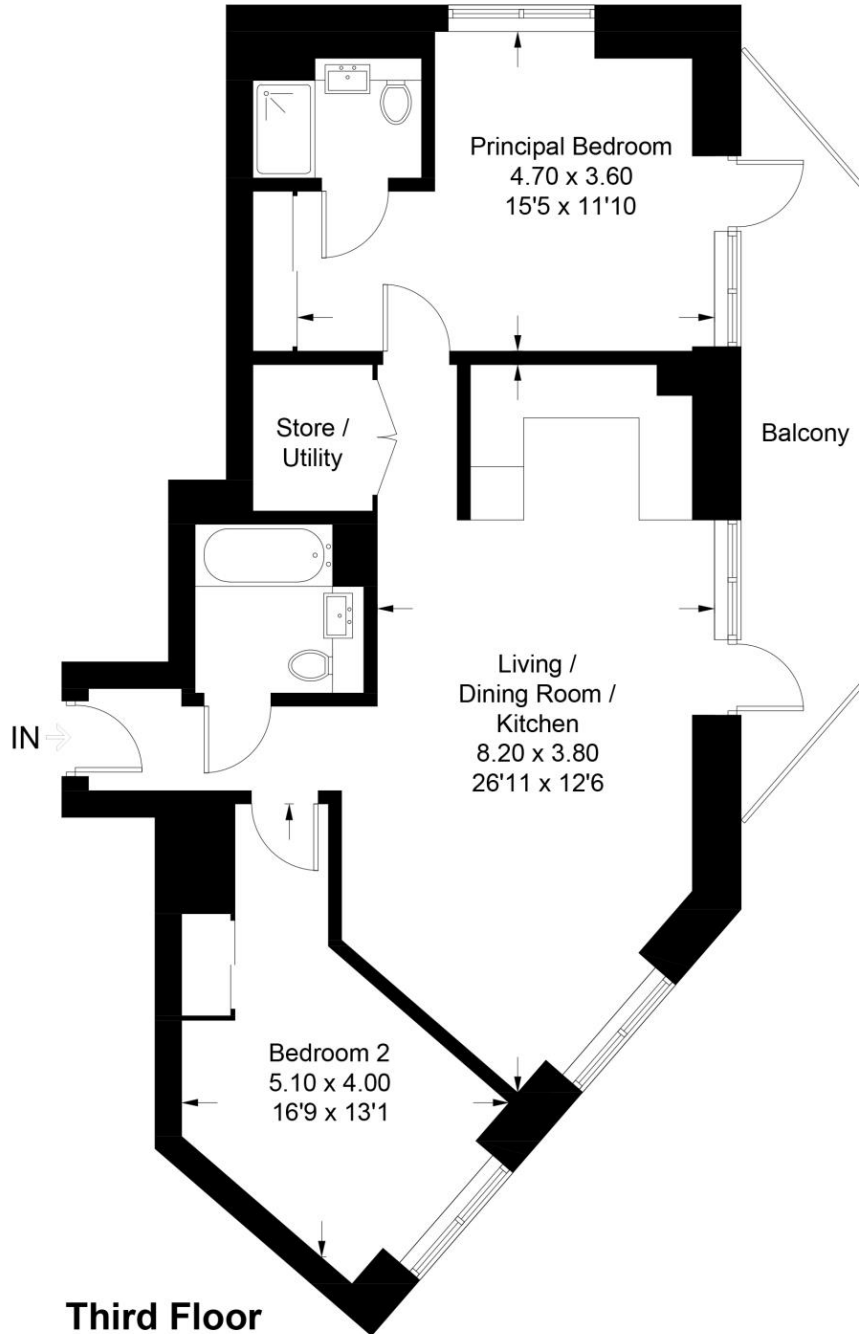


Illustration for identification purposes only, measurements are approximate, not to scale. Fourlabs.co © (ID1295084)

Kew Bridge  
12 Capital Interchange Way,  
London TW8 0SP  
020 3147 1880  
lettingskewbridge@jll.com

*Urban living, your way.*

[jll.co.uk/residential](http://jll.co.uk/residential)

© 2019 Jones Lang LaSalle IP, Inc. All rights reserved. All information contained herein is from sources deemed reliable; however, no representation or warranty is made to the accuracy thereof.

