



**Wenlock Road, N1**

£575,000

**Dexters**



## Wenlock Road, N1

Large one bedroom apartment set within a modern development in a sought after location. The apartment has a spacious, open plan living room with ample space to dine and a fully integrated kitchen. This area is full of natural light as it is dual aspect, has floor to ceiling windows opening out onto individual Juliette balconies and also leads out to the property's private balcony. The property has a spacious double bedroom with in-built storage, there is further storage in the hallway and a modern family bathroom.

Perfectly positioned between Angel, Old Street and Shoreditch, the apartment enjoys the best of Islington living, with Regent's Canal, Shepherdess Walk Park, Shoreditch Park and Upper Street all within close proximity, alongside an outstanding selection of cafés, restaurants and independent shops. Excellent transport connections provide fast access to the City, King's Cross, Liverpool Street and beyond.

### Features

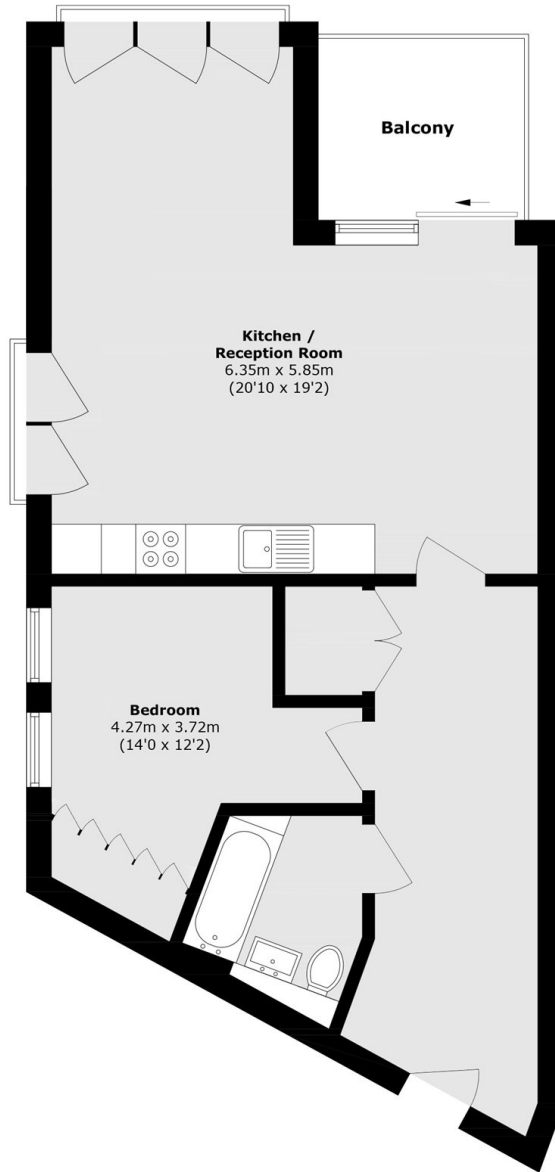
- Central Location
- Private Balcony
- Dual aspect
- Bright interiors
- Modern development
- Large one bedroom







# Wenlock Road, London, N1



Total area (approx.): 60.8 sq. m (654.5 sq. ft)

Balcony total area (approx.): 5.4 sq. m (58.1 sq. ft)