

Shergar Way

Salford



HILLS

In Excess of **£280,000**

Shergar Way

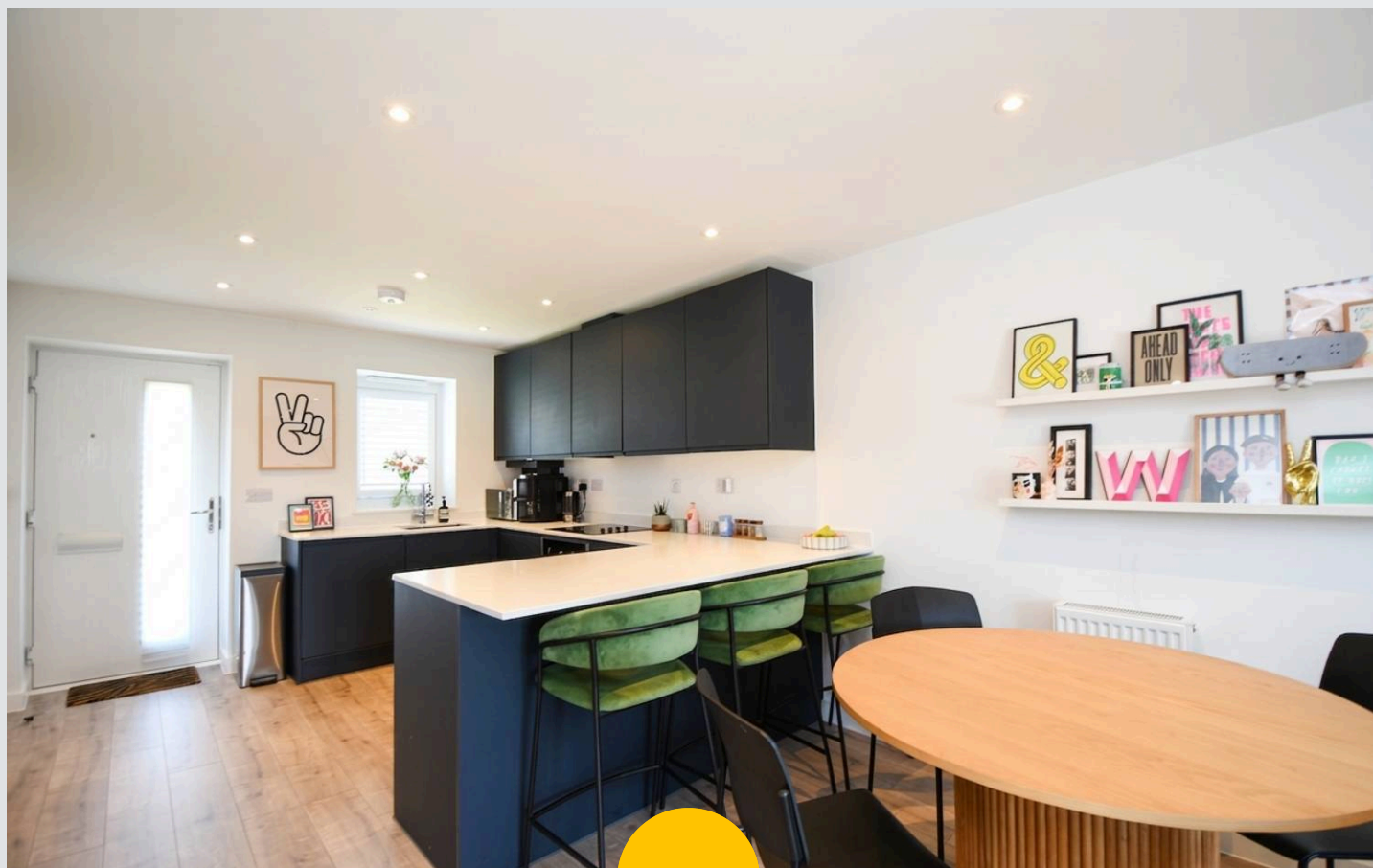
Salford

Stylish Two Bedroom Terraced Property Located on the Popular Castle Irwell Development! Featuring two double bedrooms, a modern bathroom suite and a landscaped rear garden!

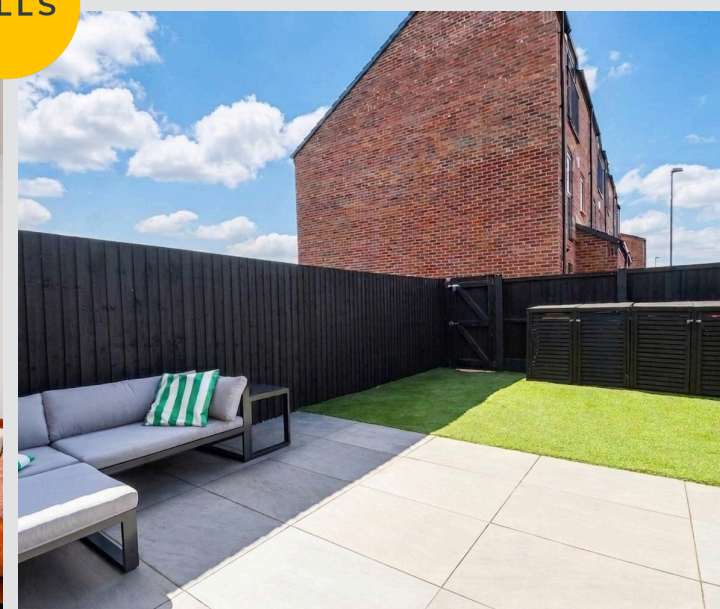
Council Tax band: A

Tenure: Freehold

- Beautifully Presented Two Bedroom Terraced Property
- Located on the Popular, Thoughtfully Designed Castle Irwell Development
- Open Plan Living, Dining and Kitchen Area
- Benefits from a Downstairs W/C
- Two Double Bedrooms
- Modern Three-Piece Bathroom
- Low maintenance landscaped rear garden complete with porcelain tiles and artificial grass
- Close to Excellent Transport Links into Salford Quays, Media City and Manchester City Centre
- Ideal First Time Home or Investment
- Viewing is Highly Recommended!



HILLS



Lounge / Diner

16' 11" x 13' 9" (5.15m x 4.19m)

Kitchen

12' 9" x 10' 1" (3.89m x 3.08m)

Downstairs W.C.

3' 6" x 5' 10" (1.06m x 1.79m)

Landing

Bedroom One

12' 8" x 13' 7" (3.87m x 4.15m)

Bedroom Two

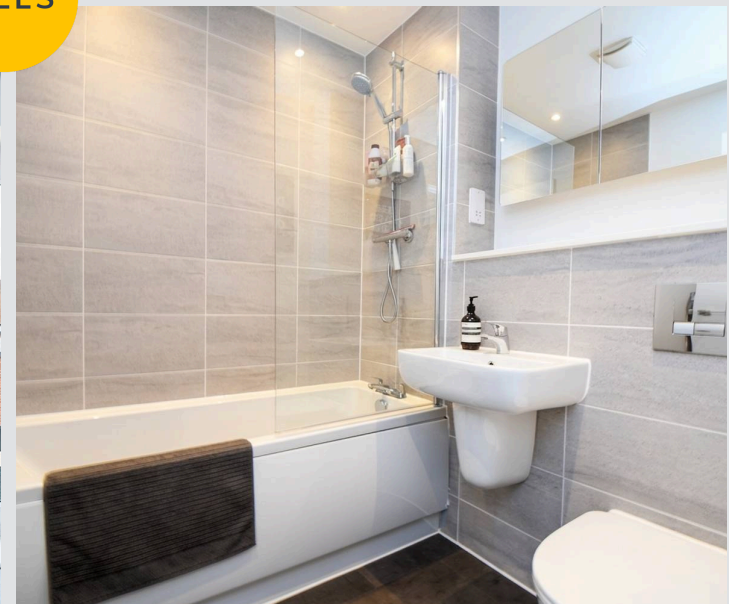
7' 3" x 6' 5" (2.20m x 1.96m)

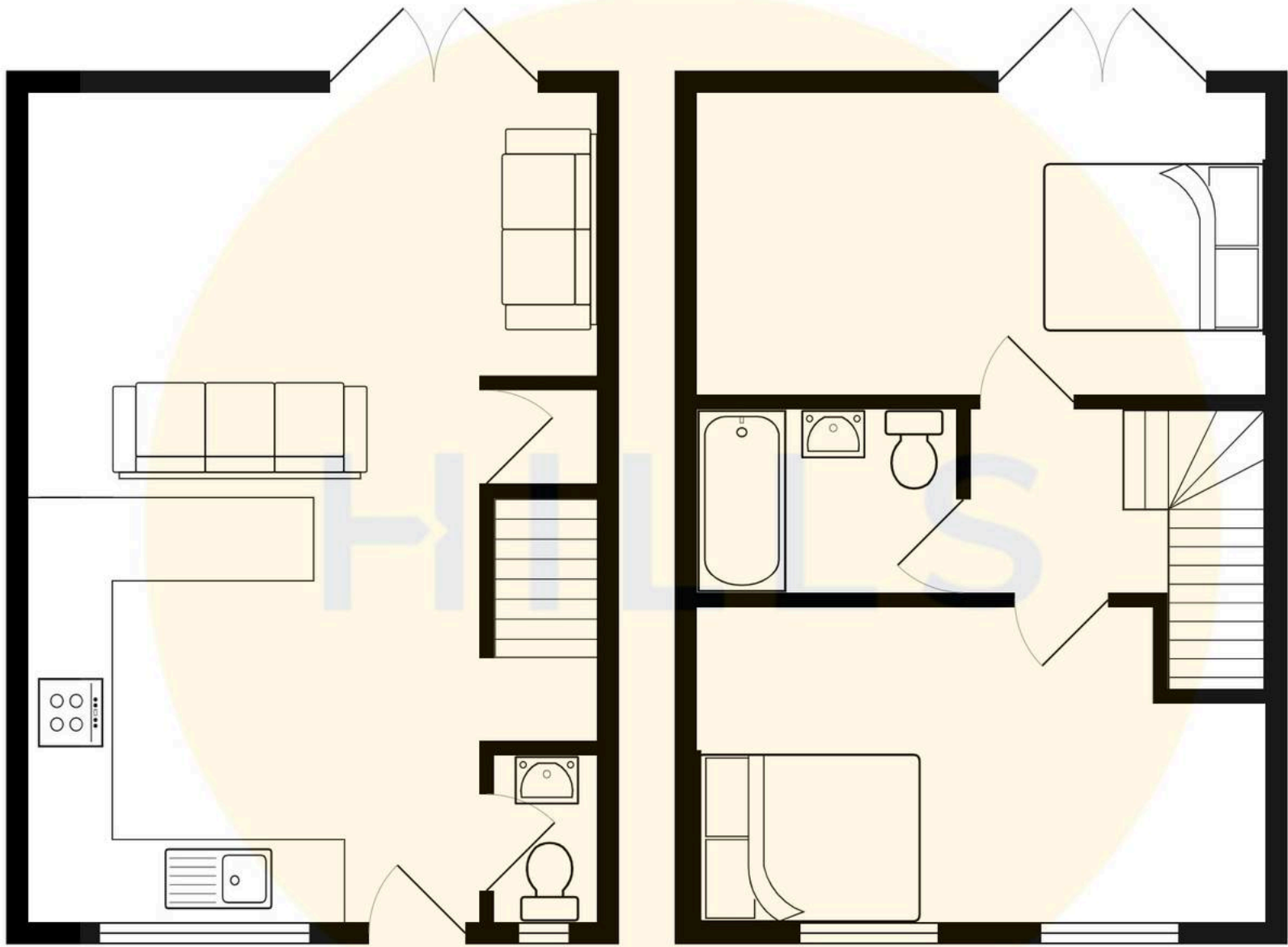
Bathroom

11' 0" x 13' 8" (3.36m x 4.16m)



HILLS







Hills | Salfords Estate Agent

Hills Residential, Sentinel House Albert Street - M30 0SS

0161 707 4900

sales@hills.agency

www.hills.agency/



By law, we are required to conduct anti-money laundering checks on all potential buyers and sellers. In line with HMRC guidelines, our trusted partner, Coadjute, will securely manage these checks on our behalf. A non-refundable fee of £45 + VAT per person will apply, and Coadjute will handle the payment. Once an offer is accepted, Coadjute will send a secure link for you to complete the biometric checks. These checks must be completed before we can send the memorandum of sale to all parties. PLEASE NOTE: The Agent has not tested any equipment, fixtures, fittings or services so cannot verify that they are in working order or fit for the purpose. References to the properties tenure are based on information supplied by the seller. You are advised to check the availability of this property before travelling any distance to view. Every effort has been made to ensure these particulars are correct and not misleading but their accuracy is not guaranteed nor do they form part of any contract.