



## Chichele Road, NW2

£425,000

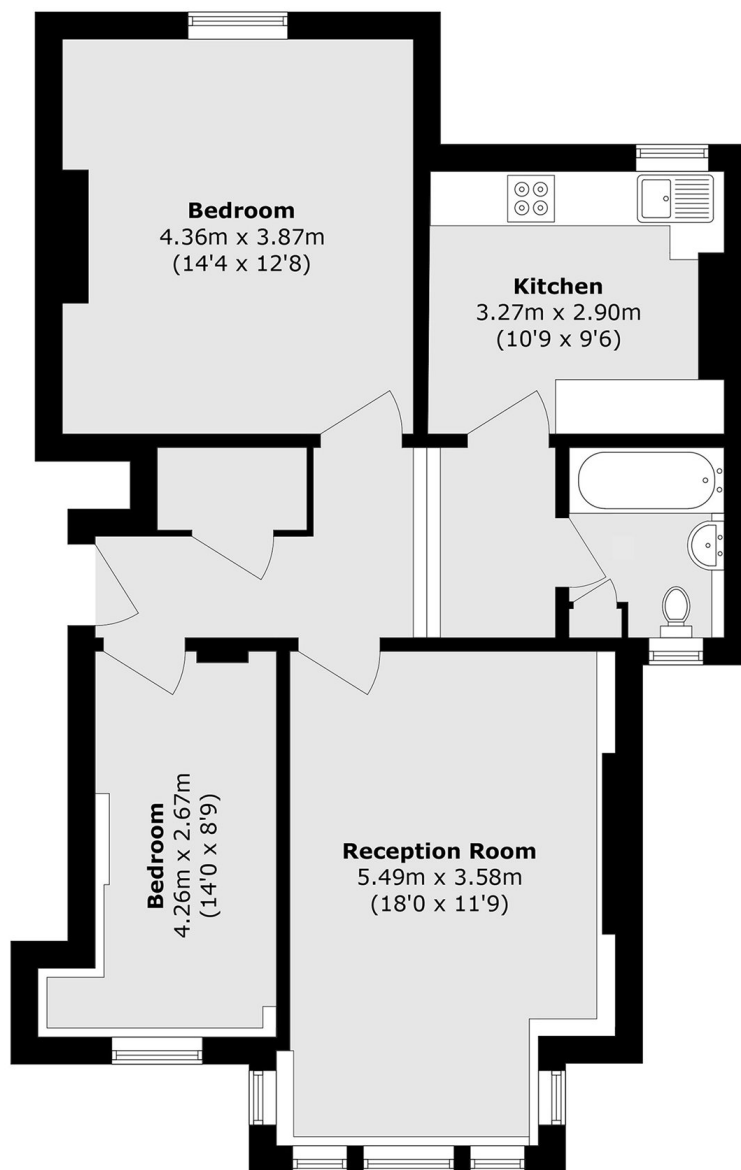
A bright and well presented two bedroom flat on Chichele Road, offering a practical layout ideal for first time buyers or buy to let investors. The property features two comfortable bedrooms, a generous reception room with plenty of natural light and space for dining and a modern bathroom with an efficient shower.

Located close to Mapesbury Dell, Willesden Green station (Jubilee line - Zone 2) and Cricklewood station (Thameslink), with a variety of boutique shops, restaurants and cafés nearby.

### Features

- Two Bedrooms
- One Bathroom
- Separate Kitchen
- Chain Free
- Leasehold
- First Floor

# Chichele Road, London, NW2



Total area (approx.): 70.9 sq. m (763.2 sq. ft)