



A two bedroom bright and well proportioned ground floor maisonette
Sommerford Close, Eastcote, Middlesex HA5 2LS

ROBSONS

Asking Price: £1,700 pcm

A two bedroom bright and well proportioned ground floor maisonette

Somerford Close, Eastcote, Middlesex HA5 2LS

• RECEPTION/DINING ROOM • KITCHEN • STUDY • TWO BEDROOMS • BATHROOM • GAS CENTRAL HEATING • DOUBLE GLAZING • PRIVATE REAR GARDEN • OFF STREET PARKING • UNFURNISHED

Description

We are delighted to present this spacious two bedroom ground floor maisonette located in Pinner. This property offers ample living space and is positioned only a short distance to Northwood Hills Station and Pinner High Street. This family home offers; Spacious Lounge, two good sized bedroom, separate study, family bathroom and fitted kitchen with appliances. Other benefits include; well maintained private rear garden and a driveway with off street parking.

** An advance reservation payment of one weeks rent is required to secure the property **

Location

Somerford Close is situated moments away from Northwood Hills Station, restaurants coveted schooling and local shop





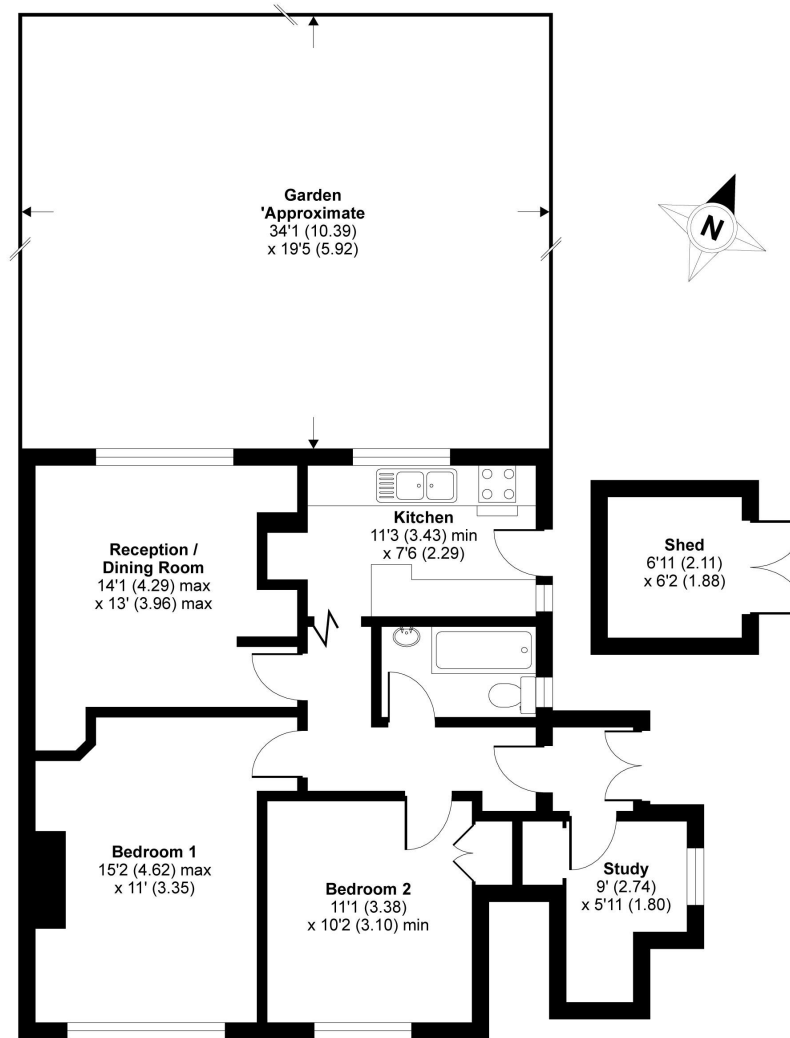
Additional Information

- Local Authority: Hillingdon
- Council Tax Band: C
- Deposit Amount: £1,961.00
- Reservation Payment: One weeks rent
- Energy Efficiency Rating: Band C
- Available Date: 01/10/2025



Somerford Close, HA5

APPROX. GROSS INTERNAL FLOOR AREA 737 SQ FT 68.5 SQ METRES (EXCLUDES SHED)



GROUND FLOOR

Whilst every attempt has been made to ensure the accuracy of the floor plan contained here, measurements of doors, windows and rooms are approximate and no responsibility is taken for any error, omission or misstatement. These plans are for representation purposes only as defined by RICS Code of Measuring Practice and should be used as such by any prospective purchaser. Specifically no guarantee is given on the total square footage of the property if quoted on this plan. Any figure given is for initial guidance only and should not be relied on as a basis of valuation.

Copyright nichecom.co.uk 2018 Produced for Robsons Lettings REF : 331757



REGISTERED OFFICE 2-4 PACKHORSE ROAD, GERRARDS CROSS, BUCKINGHAMSHIRE, ENGLAND, SL9 7QE. COMPANY NO. 07557114. VAT NO. GB211239453