



## 18 Trowtree Avenue, Manchester, M12 5LR Offers in excess of £240,000

Goodmove present this 3 bedroom end of terrace house for sale on Trowtree Avenue, Manchester.

Situated on a well established residential street in Manchester, this well presented three-bedroom mid terrace home offers generous living space, practical modern features, and excellent convenience for local amenities, schools, and transport links. With a valuable ground floor WC and well-balanced accommodation throughout, the property is an ideal choice for first time buyers, families, or investors seeking a reliable rental opportunity.

In terms of location, you couldn't ask for more. Public transport links, local amenities, and schools are all within reach, and green spaces are abundant. This house marries a delightful mix of convenience and tranquillity, making it the perfect family home.

The property has been attractively priced and would invite all buyers in a position to proceed to view.

Please call for more information.



**Disclaimer**

1. MONEY LAUNDERING REGULATIONS: Intending purchasers will be asked to produce identification documentation at a later stage and we would ask for your co-operation in order that there will be no delay in agreeing the sale.

2. General: While we endeavour to make our sales particulars fair, accurate and reliable, they are only a general guide to the property and, accordingly, if there is any point which is of particular importance to you, please contact the office and we will be pleased to check the position for you, especially if you are contemplating travelling some distance to view the property.

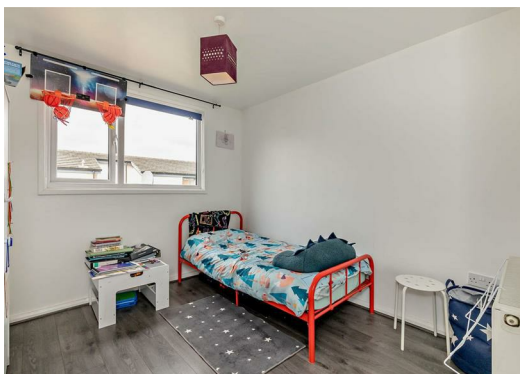
3. Measurements: These approximate room sizes are only intended as general guidance. You must verify the dimensions carefully before ordering carpets or any built-in furniture.

4. Services: Please note we have not tested the services or any of the equipment or appliances in this property, accordingly we strongly advise prospective buyers to commission their own survey or service reports before finalising their offer to purchase.

5. THESE PARTICULARS ARE ISSUED IN GOOD FAITH BUT DO NOT CONSTITUTE REPRESENTATIONS OF FACT OR FORM PART OF ANY OFFER OR CONTRACT. THE MATTERS REFERRED TO IN THESE PARTICULARS SHOULD BE INDEPENDENTLY VERIFIED BY PROSPECTIVE BUYERS OR TENANTS. NEITHER GOODMOVE NOR ANY OF ITS EMPLOYEES OR AGENTS HAS ANY AUTHORITY TO MAKE OR GIVE ANY REPRESENTATION OR WARRANTY WHATSOEVER IN RELATION TO THIS PROPERTY.

| Energy Efficiency Rating                    |                         |           |
|---|-------------------------|-----------|
|   | Current                 | Potential |
| Very energy efficient - lower running costs |                         |           |
| (92 plus) A                                 |                         |           |
| (81-91) B                                   |                         |           |
| (69-80) C                                   |                         |           |
| (55-68) D                                   |                         |           |
| (39-54) E                                   |                         |           |
| (21-38) F                                   |                         |           |
| (1-20) G                                    |                         |           |
| Not energy efficient - higher running costs |                         |           |
| <b>England &amp; Wales</b>                  | EU Directive 2002/91/EC |           |

| Environmental Impact (CO <sub>2</sub> ) Rating                  |                         |           |
|---|-------------------------|-----------|
|   | Current                 | Potential |
| Very environmentally friendly - lower CO <sub>2</sub> emissions |                         |           |
| (92 plus) A   |                         |           |
| (81-91) B   |                         |           |
| (69-80) C   |                         |           |
| (55-68) D   |                         |           |
| (39-54) E   |                         |           |
| (21-38) F   |                         |           |
| (1-20) G  |                         |           |
| Not environmentally friendly - higher CO <sub>2</sub> emissions |                         |           |
| <b>England &amp; Wales</b>                                      | EU Directive 2002/91/EC |           |



Ground Floor 4320 Park Approach, Thorpe Park, Leeds, LS15 8GB

Tel: 0113 892 1166

sales@goodmove.co.uk

www.goodmove.co.uk