



Manor Park Villa, Kingsdon, Somerton, TA11 7LL

welcome to

Manor Park Villa, Kingsdon, Somerton

An executive four bedroom detached family home, offered for sale with no onward chain, situated within the desirable village of Kingsdon. The accommodation offers a wealth of space, versatility & natural light throughout & externally boasting ample driveway parking, garage & spacious gardens.



Entrance

Double glazed door to the side, opening into:

Entrance Hall

Double glazed window to the side. Stairs rising to the first floor with understairs storage cupboards.

Downstairs Cloakroom

Double glazed window to the side. Suite comprising wash hand basin and WC.

Study

9' 3" x 5' 10" (2.82m x 1.78m)

Double glazed window to the front. Perfect for a home office or playroom.

Lounge

20' 3" x 13' 1" (6.17m x 3.99m)

A lovely light and spacious room with double glazed windows to the front and side. Feature fireplace with stone surround, multi fuel burning stove and open chimney. Double glazed door to the rear, with windows to either side, opening into the conservatory.

Conservatory

11' 3" x 10' 3" (3.43m x 3.12m)

Double glazed windows to the rear and sides overlooking the garden. Double glazed French doors to the rear, opening to the garden.

Dining Room

13' 5" x 7' 7" (4.09m x 2.31m)

Double glazed window to the side. Space for dining table and chairs. Door opening into:

Kitchen

13' 5" x 8' 6" (4.09m x 2.59m)

Double glazed window to the rear overlooking the garden. A range of fitted wall, base and drawer units with work surface over and complementary tiled surround. One and a half bowl stainless steel sink and drainer with mixer tap. Space for free standing cooker. Plumbing for washing machine. Space for fridge/freezer. Door to the side, opening into:

Rear Porch

Double glazed door to the front, opening to the driveway. Double glazed window to the rear. Further double glazed door to the side, opening to the rear garden. Great additional space for storage.

First Floor Landing

Access to the loft space. Airing cupboard.

Bedroom One

13' 2" x 9' 11" (4.01m x 3.02m)

A lovely light room with double glazed windows to the front and side overlooking stunning countryside views. A range of built in wardrobes. Space for free standing furniture.

Bedroom Two

13' 3" x 10' 3" (4.04m x 3.12m)

Double glazed windows to the front and side with beautiful countryside views. Space for free standing furniture.

Bedroom Three

13' 3" x 10' 2" (4.04m x 3.10m)

Double glazed windows to the rear and side overlooking the garden. Space for free standing furniture.

Bedroom Four

13' 9" x 8' 2" (4.19m x 2.49m)

Double glazed window to the rear overlooking the garden. Space for free standing furniture.

Family Shower Room

Double glazed window to the side. Suite comprising enclosed walk in shower cubicle, wash hand basin and WC. Inset spotlights to the ceiling. Chrome towel radiator.

Garage

24' 9" x 9' 5" (7.54m x 2.87m)

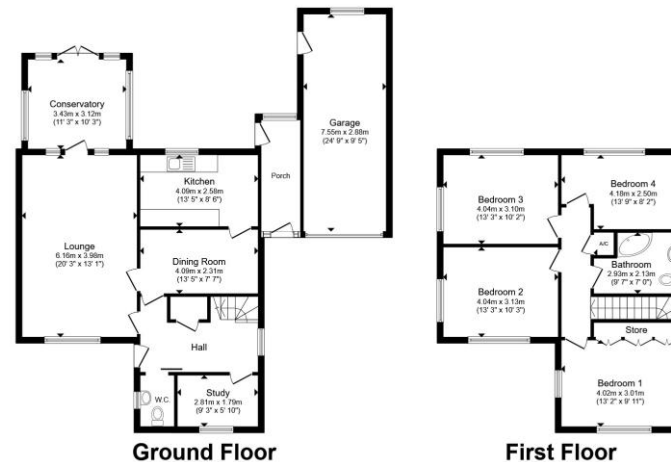
A longer than average garage with up and over door to the front. Double glazed window to the rear. Personal door to the side, opening to the garden. Power and light.

Front Garden

Access via a good size tarmac driveway, leading to the property and garage and providing ample off road parking. The garden is laid mainly to lawn with a variety of decorative plant and tree borders.

Rear Garden

A good size enclosed rear garden, laid mainly to lawn with some lovely area to sit and enjoy the summer sunshine. Stone built outbuilding, garden shed, greenhouse and water butt.



Total floor area 168.3 m² (1,812 sq.ft.) approx

This floor plan is for illustrative purposes only. It is not drawn to scale. Any measurements, floor areas (including any total floor area), openings and orientation are approximate. No details are guaranteed, they cannot be relied upon for any purpose and they do not form part of any agreement. No liability is taken for any error, omission or misstatement. A party must rely upon its own inspection(s). Powered by www.propertybox.io

fox & sons



check out more properties at fox-and-sons.co.uk



welcome to

Manor Park Villa, Kingsdon, Somerton

- Executive Detached Family Home
- Four Double Bedrooms
- Spacious & Versatile Accommodation
- Garage & Ample Driveway Parking
- Good Size Enclosed Gardens with Outbuildings

Tenure: Freehold EPC Rating: E

Council Tax Band: E

£675,000



Please note the marker reflects the postcode not the actual property

check out more properties at fox-and-sons.co.uk



Property Ref:
YEO108783 - 0005

1. MONEY LAUNDERING REGULATIONS Intending purchasers will be asked to produce identification documentation at a later stage and we would ask for your co-operation in order that there is no delay in agreeing the sale. 2. These particulars do not constitute part or all of an offer or contract. 3. The measurements indicated are supplied for guidance only and as such must be considered incorrect. Potential buyers are advised to recheck measurements before committing to any expense. 4. We have not tested any apparatus, equipment, fixtures or services and it is in the buyers interest to check the working condition of any appliances. 5. Where an EPC, or a Home Report (Scotland only) is held for this property, it is available for inspection at the branch by appointment. If you require a printed version of a Home Report, you will need to pay a reasonable production charge reflecting printing and other costs. 6. We are not able to offer an opinion either written or verbal on the content of these reports and this must be obtained from your legal representative. 7. Whilst we take care in preparing these reports, a buyer should ensure that his/her legal representative confirms as soon as possible all matters relating to title including the extent and boundaries of the property and other important matters before exchange of contracts.


fox & sons



01935 412100



Yeovil@fox-and-sons.co.uk



14 Princes Street, YEOVIL, Somerset, BA20 1EW



fox-and-sons.co.uk