

Colin Dean Residential

in partnership with Dexters



Fairfield Drive, HA2

£1,800 pcm

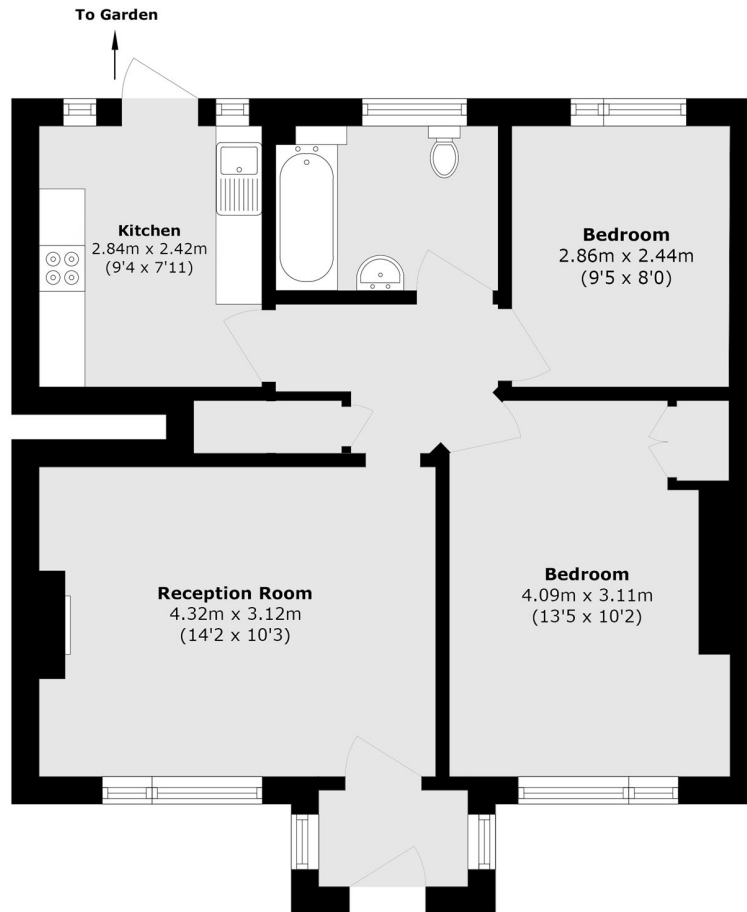
This beautifully presented ground-floor maisonette offers two generous double bedrooms, a sleek fitted bathroom, a bright and airy reception room, and a separate kitchen with direct access to a private garden. This home is ideal for a professional couple or small family seeking extra space and comfort Energy Rating: .

Situated in a highly desirable location, the property benefits from easy access to a wide range of shopping, dining, and leisure facilities, along with highly regarded local schools. Transport links are excellent, with Harrow & Wealdstone Station just 0.8 miles away, offering Overground and Bakerloo Line services. North Harrow Station (Metropolitan Line) is approximately 0.9 miles away.

- Ground Floor Maisonette • Two Double Bedrooms • Modern Bathroom •
- Part-furnished • Private Garden • Central Location •

Colin Dean Residential

in partnership with Dexters



Total area (approx.): 53.6 sq. m (576.9 sq. ft)

Colin Dean Residential
350 Pinner Road,
Harrow, HA1 4LB
020 8515 7929
daniel.murray@colindean.com

Energy Rating: We aim to make our particulars both accurate and reliable. However they are not guaranteed; nor do they form part of an offer or contract. If you require clarification on any points then please contact us, especially if you're travelling some distance to view. Please note that appliances and heating systems have not been tested and therefore no warranties can be given as to their good working order.