



Chigwell Road, South Woodford, E18

Spencer Munson are pleased to offer you this end of terrace two bedroom house. This property is just a short walk from South Woodford central line station.

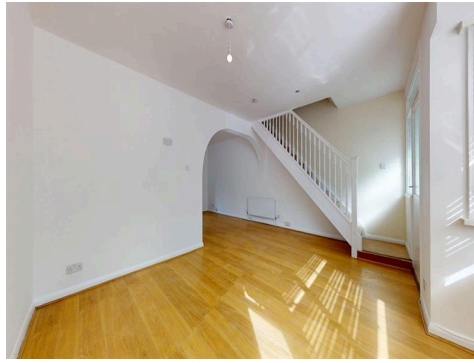
You have a spacious living room a separate dining room, a modern fitted kitchen with ample storage, intergrated kitchen appliances two double bedrooms upstairs along with a family bathroom and a private rear garden. This property benefits of having its own driveway offered unfurnished, Available now , Council tax band C EPC Rating E

Rent: £1,950 - Monthly



Chigwell Road, South Woodford, E18

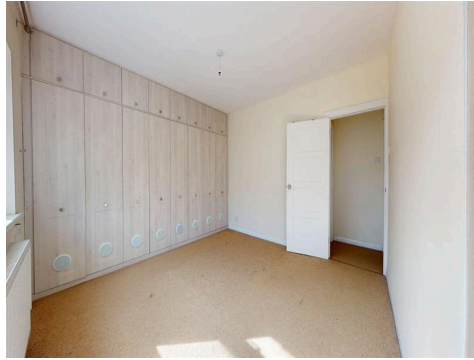
Reception 1



Kitchen



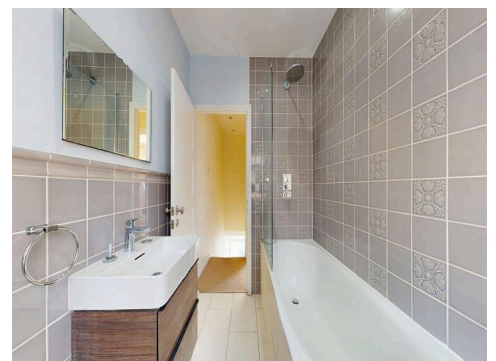
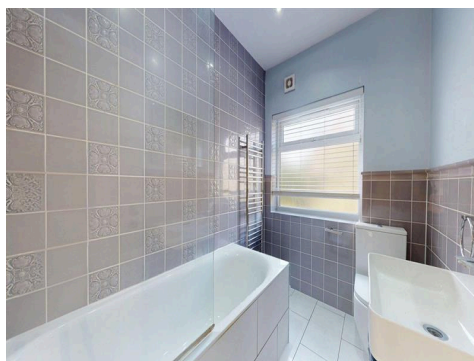
Bedroom 1



Bedroom 2

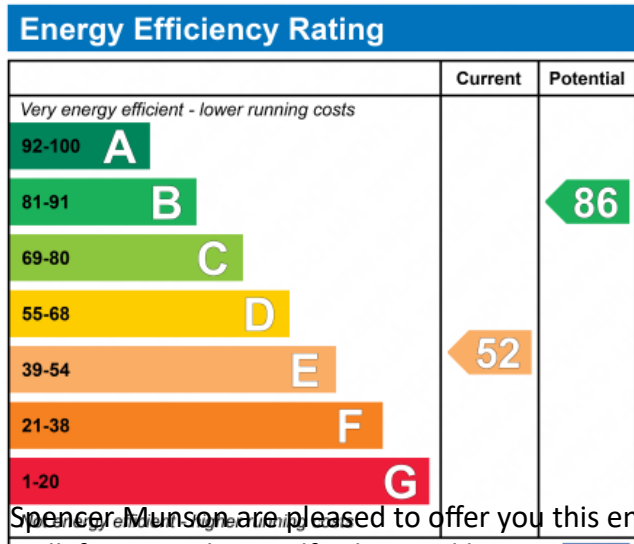


Bathroom



Medium sized Garden

Parking



Spencer Munson are pleased to offer you this end of terrace two bedroom house. This property is just a short walk from South Woodford central line station. You have a spacious living room a separate dining room, a modern fitted kitchen with ample storage, integrated kitchen appliances two double bedrooms upstairs along with a family bathroom and a private rear garden. This property benefits of having its own driveway offered unfurnished, Available now , Council tax band C EPC Rating E

England & Wales 2002/91/EC

Chigwell Road, South Woodford, E18

Disclaimer

These particulars are intended to give a fair and substantially correct overall description for the guidance of intending tenants/purchasers and do not constitute an offer or part of a contract. Prospective tenants/purchasers and/or lessees should seek their own professional advice. All descriptions, dimensions, reference to condition, fixtures, fittings and necessary permissions for use and occupation and other details are given in good faith and are believed to be correct. However, intending tenants/purchasers should not rely on them as statements or representations of fact, but must satisfy themselves by inspection or otherwise as to the correctness of each of them. Fixtures and fittings shown in pictures and on viewings may well not be included in any tenancy/sale and any prospective tenant/purchaser must clarify this for themselves. All measurements and floorplans are approximate and produced as a guide in good faith. Please note that some of the furniture and decor items shown in these images have been digitally added using AI technology for illustrative purposes. The actual property may differ in appearance. Prospective buyers or renters are encouraged to visit the property in person to get an accurate representation.