

Crucible

Homes



Oak Tree Close
Rotherham, S66 2NY

Asking Price
£180,000

Overview

Sold with NO ONWARD CHAIN!

Two Bedrooms

End Terrace

Cul-de-sac Location

Downstairs WC

Excellent transport links



Description

Oak Tree Close, Wickersley

Asking Price: £180,000

Beautifully Presented 2-Bedroom End Terrace Home in a Highly Sought-After Location Nestled within the ever-popular village of Wickersley, this charming and well-maintained two-bedroom end terrace property offers modern living in a highly desirable setting. Ideally suited to first-time buyers, small families, or those looking to downsize, the home combines comfort, convenience, and style.

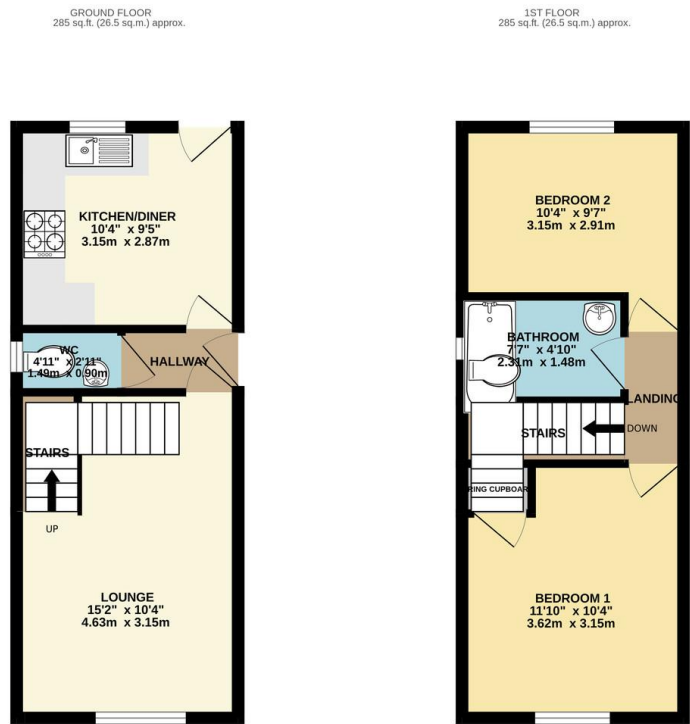
Ground Floor

Upon entering, you are welcomed into a bright and airy hallway that leads through to a spacious lounge featuring plenty of natural light and a comfortable layout, perfect for everyday living. The modern fitted kitchen is positioned at the rear of the property and offers ample storage, a good amount of worktop space, and direct access to the beautifully maintained rear garden. This outdoor space is ideal for relaxing, hosting family gatherings, or enjoying quiet evenings.

First Floor

The first floor boasts two generously sized bedrooms, both well-proportioned and versatile, with the main bedroom offering built-in storage





options. The family bathroom is modern and neatly presented, complete with a three-piece suite.

Exterior & Location

Externally, the property enjoys a well-kept garden to the rear, offering a private and inviting outdoor area. The home is set within a quiet and friendly cul-de-sac, popular with families and professionals alike.

Wickersley is renowned for its excellent range of amenities, vibrant village atmosphere, and reputable schools. The property is ideally positioned for easy access to major transport links, including the M18 and bus routes, making commuting simple and convenient. Restaurants, shops, cafés, and local parks are all close by, further enhancing the appeal of this fantastic home.

A wonderful opportunity to secure a lovely property in one of Rotherham's most desirable locations - early viewing is strongly recommended.

