



Price

£1,400 PCM

Fees Apply

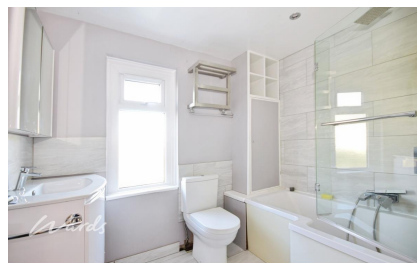


Available 29/11/25

St. Johns Road New
Romney TN28

Wards

Helping you move forwards



Main Features

RECENTLY REFURBISHED COTTAGE TERRACE

QUIET RESIDENTIAL LOCATION

WALKING DISTANCE TO THE TOWN CENTRE

USEABLE CONSERVATORY

LOG BURNER AND GAS CENTRAL HEATING

LOW MAINTENANCE GARDEN



Deposit required is £1,615.38
Shepway District - Council Tax Band Tax Band B

Renting a property is a big commitment and we recommend that you visit the local authority website and these websites which offer helpful information and advice about letting

www.gov.uk/government/publications/how-to-rent

www.gov.uk/private-renting

www.wardsofkent.co.uk/renting/tenancy-fees-individuals/

www.gov.uk/green-deal-energy-saving-measures

Call Ashford 01233 639654 ■ wardsofkent.co.uk

IMPORTANT INFORMATION: Please contact our Lettings Team who will confirm the total costs involved in renting this property. For clarification, we wish to inform the prospective tenant that we have prepared these details as a general guide. The agent has not carried out a detailed survey nor tested the services, appliances, or specific fittings (unless otherwise stated), and no warranty can be given as to their condition. All room measurements are taken at floor level. We strongly recommend that all the information which we provide about the property is verified by yourself and your advisers. The contents of this publication are © Wards, 2015. Wards is a trading name of Arun Estates Limited Registered in England No. 2597969

Accommodation

Double Bedroom 1

Double Bedroom 2

Double Bedroom 3

Reception 1

Bathroom 1

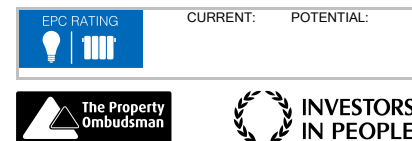
Double Bedroom 1

Double Bedroom 2

Double Bedroom 3

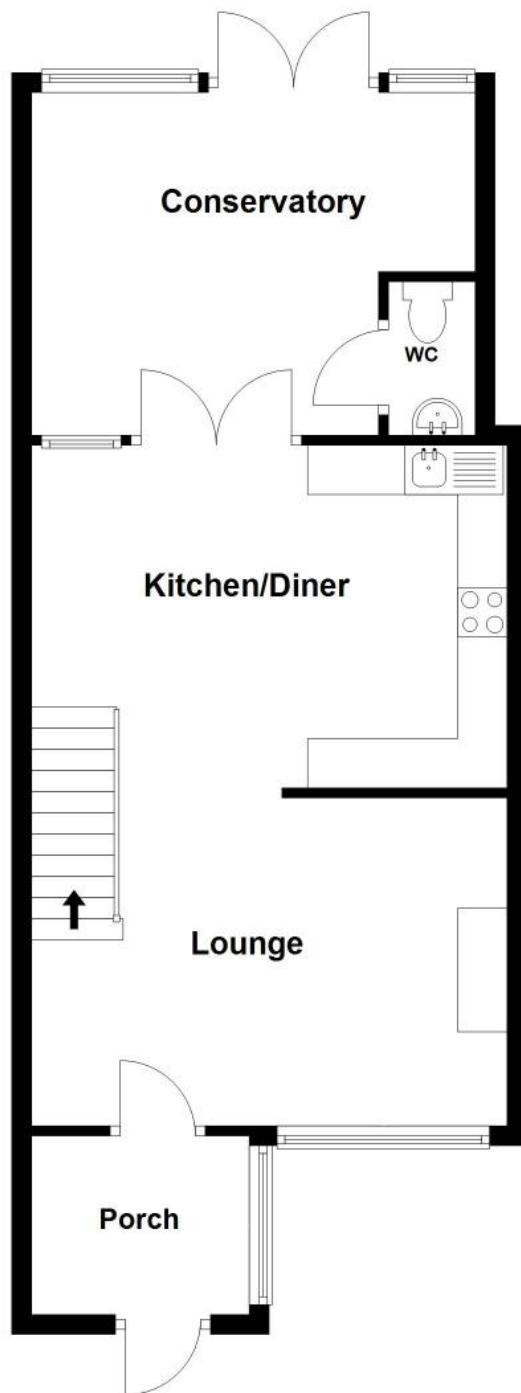
Reception 1

Bathroom 1



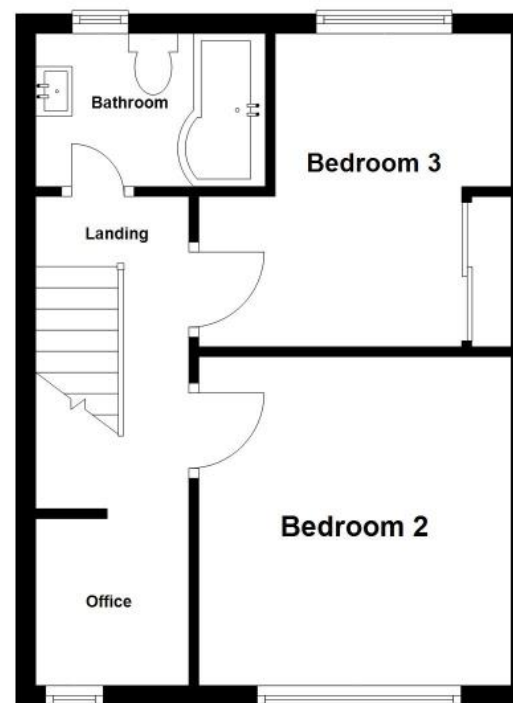
Ground Floor

Approx. 53.1 sq. metres (571.0 sq. feet)



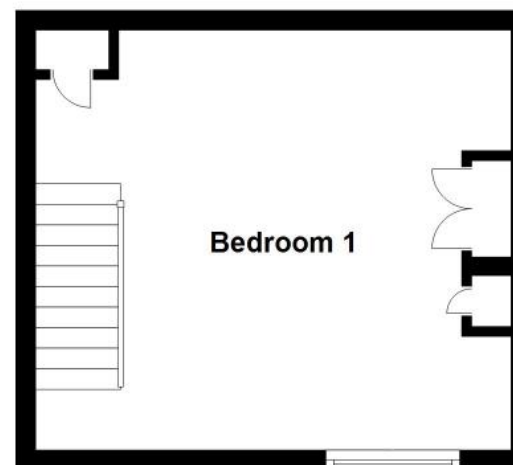
First Floor

Approx. 33.4 sq. metres (359.0 sq. feet)



Second Floor

Approx. 19.6 sq. metres (210.4 sq. feet)



Total area: approx. 106.0 sq. metres (1140.5 sq. feet)