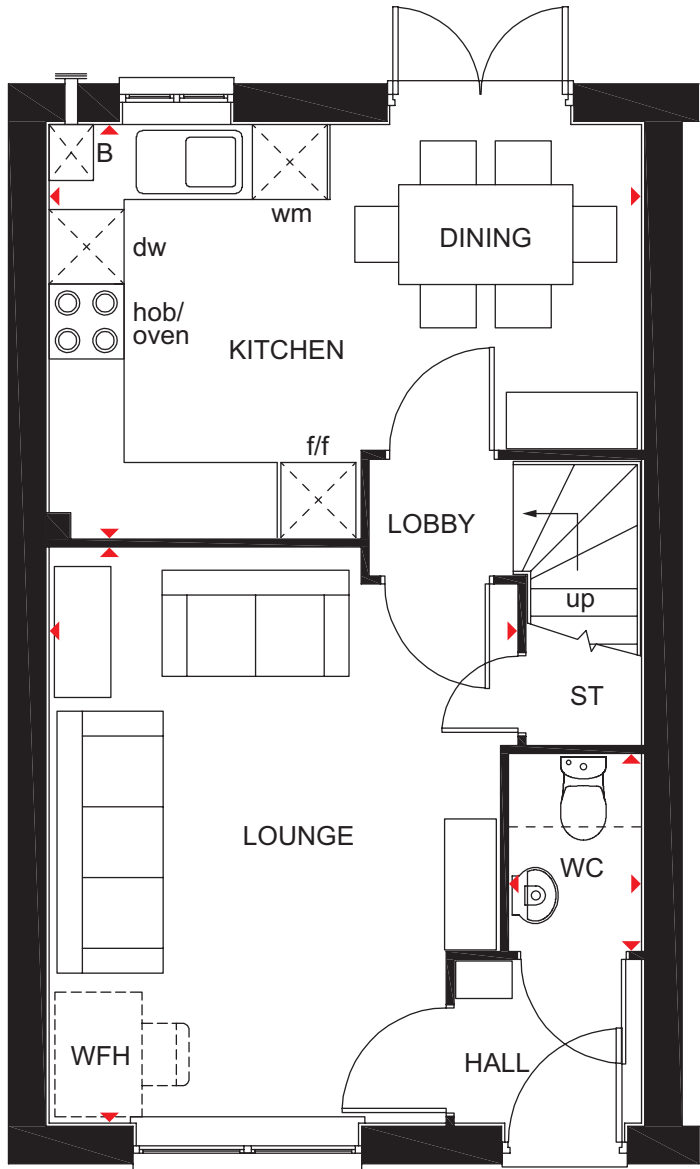


# THE ARCHFORD

## THREE BEDROOM TERRACED HOME

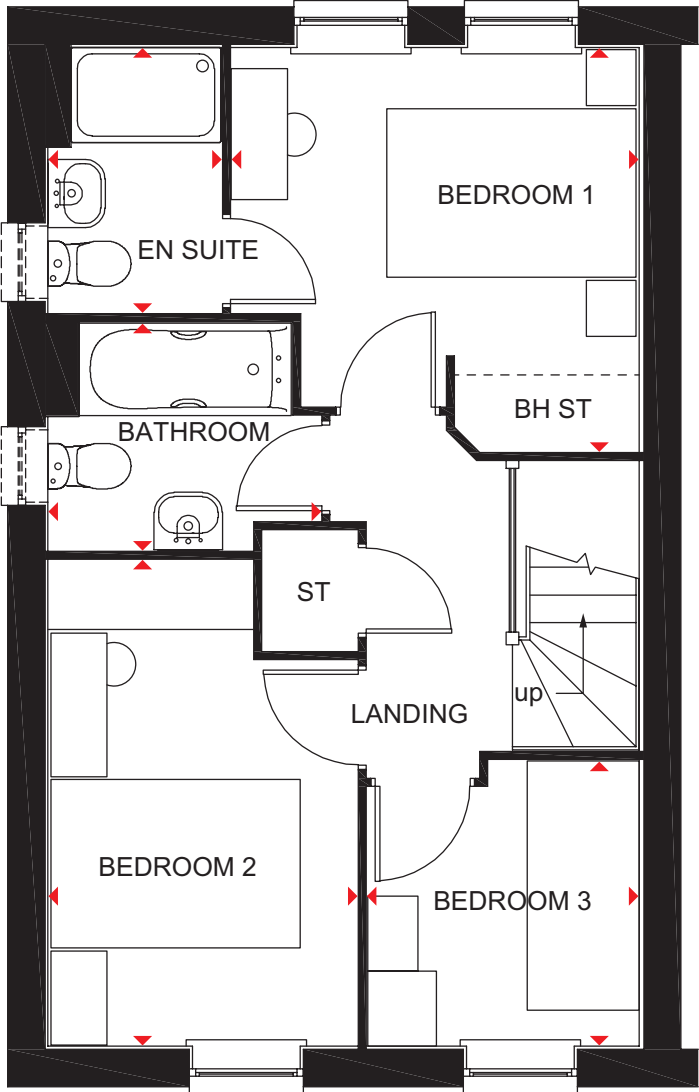


A stylish terraced home, The Archford has an open-plan kitchen with dining area designed for practical, modern living with French doors opening out onto the rear garden creating a bright, light-filled room. A lobby, separating the kitchen and the front-aspect lounge, has stairs leading to the first floor. Here, the main bedroom has its own en suite, with a separate bathroom for the rest of the family. A further double bedroom and a single bedroom make this an attractive family home.



### Ground Floor

Lounge	4604 x 3746 mm	15'1" x 12'3"
Kitchen/Dining	4750 x 3310 mm	15'7" x 10'10"
WC	1561 x 1054 mm	5'1" x 3'5"



### First Floor

Bedroom 1	3234 x 3276 mm	10'7" x 10'9"
En Suite	1385 x 2119 mm	4'7" x 6'11"
Bedroom 2	2475 x 3891 mm	8'1" x 12'9"
Bedroom 3	2286 x 2186 mm	7'6" x 7'2"
Bathroom	1815 x 2181 mm	5'11" x 7'2"

\* Window may be omitted on certain plots.  
Speak to a Sales Adviser for details on individual plots.

### Key

B	Boiler	BH ST	Bulkhead store	wm	Washing machine space	WFH	Work from home space
ST	Store	f/f	Fridge/freezer space	dw	Dishwasher space	◀▶	Dimension location

dwh.co.uk



DAVID WILSON HOMES  
WHERE QUALITY LIVES

All images used are for illustrative purposes. These and the dimensions given are illustrative for this house type and individual properties may differ. Please check with your Sales Adviser in respect of individual properties. We give maximum dimensions within each room which includes areas of fixtures and fittings including fitted furniture. These dimensions should not be used for carpet or flooring sizes, appliance spaces or items of furniture. All images, photographs and dimensions are not intended to be relied upon for, nor to form part of, any contract unless specifically incorporated in writing into the contract.

DWH 2017 P382-EH7 DS04/SP437372