



www.inspiredldn.co.uk

Wadham Gardens, UB6

£1,050PCM (Deposit: £1,211)

5 5 0

- Brand new renovation throughout
- Finished to a high modern specification
- Access to a generous private garden
- All Bills Included
- Close to Greenford Station (Central Line & National Rail)
- Spacious double rooms with private ensuite bathrooms
- Large, fully equipped high-spec shared kitchen
- High-Speed Broadband
- Professionally maintained property
- Available Immediately

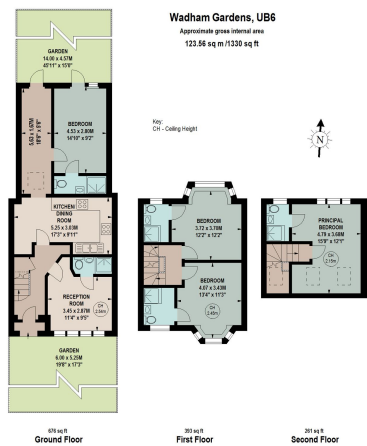


Tax Band: Furnished: Furnished

Be the first to live in this brand newly refurbished professional house share in Greenford.

Offering five spacious ensuite rooms, a large fully equipped communal kitchen and a generous private garden, the property has been thoughtfully designed to provide modern, comfortable living. Each room benefits from a private ensuite bathroom, contemporary furnishings and stylish interiors, creating the perfect balance of privacy and convenience.

Conveniently located close to Greenford Station, local shops, cafes and everyday amenities, the property offers excellent transport links into Central London and surrounding areas. Ideal for professionals seeking high-quality accommodation in a well-connected West London location.



The floor plan is not to scale and measurements and areas shown are approximate and therefore should not be used for accurate purposes only. The plan has been prepared in accordance with the RICS code of Measuring Practice and while we take care to ensure its accuracy, we do not warrant its accuracy. If there is any aspect of particular importance, you should carry out or commission your own inspection of the property.
 Copyright of GJ & Sweeney



P: 0208 187 2503

E: lettings@inspiredldn.co.uk