

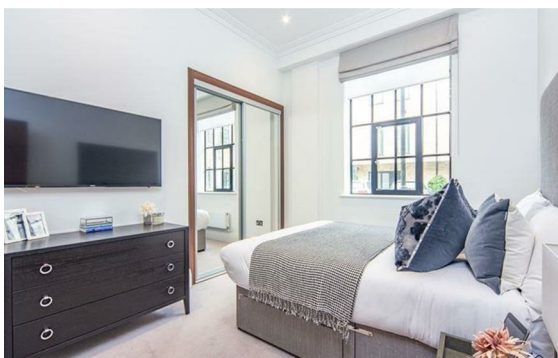
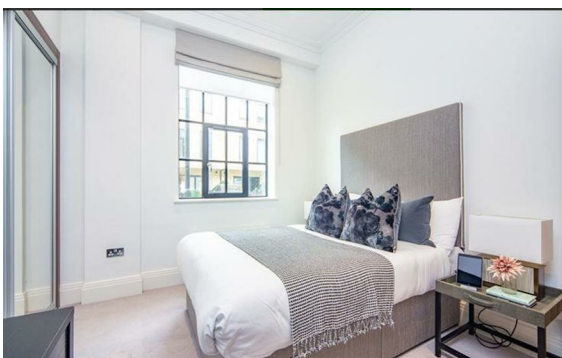
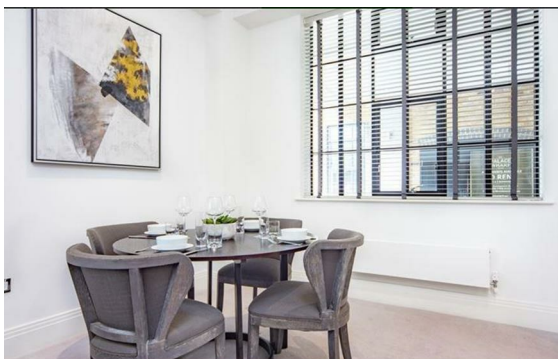
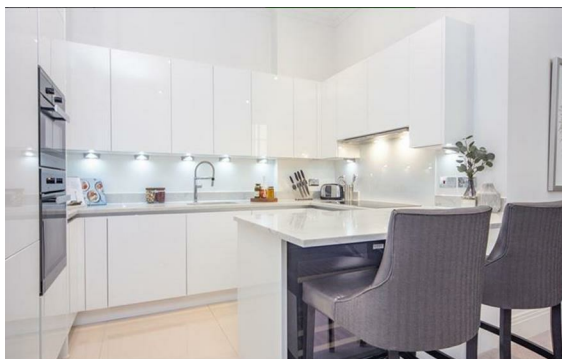


Rainville Road, Hammersmith, London, W6

Rent £790 Per Month

1 Bed | 1 Bath | 1 Reception

Please call us on 020 7724 2233 or email us info@newingtonstates.com to book a viewing.



A spacious, interior-designed ground floor one-bedroom apartment set within a gated, warehouse-style riverside development, offering a high standard of modern living.

The property features a bright open-plan kitchen and reception area with premium integrated appliances, a sleek bathroom with underfloor heating, and a well-appointed bedroom with bespoke mirrored wardrobes and automatic lighting.

Additional benefits include a built-in audio-visual system, video entry, and smart home features, all conveniently located close to excellent transport links and local amenities.

Energy Efficiency Rating: B

Agents Note: Whilst every care has been taken to prepare these particulars, they are for guidance purposes only. All measurements are approximate and are for general guidance purposes only and whilst every care has been taken to ensure their accuracy, they should not be relied upon and potential buyers/tenants are advised to recheck the measurements.

NEWINGTON
— ESTATES —

60 Upper Montagu Street

London

W1H 1SN

020 7724 2233

info@newingtonstates.com

<http://www.newingtonstates.com>