



Connells

Walnut Gardens
Plympton Plymouth



Property Description

Situated in a quiet cul-de-sac within the popular Walnut Gardens development, this well-presented two-bedroom end-terraced home offers an excellent opportunity for first-time buyers or investors alike. The property enjoys a convenient location close to the Chaddlewood Shopping District, The Ridgeway, and a range of local bus routes, providing easy access to nearby amenities and transport links.

The accommodation comprises two bedrooms, including a comfortable double room and a versatile single room ideal as a child's bedroom, home office, or guest space. The property benefits from its end-terrace position, offering added privacy and a pleasant setting within the cul-de-sac.

Externally, the home includes an allocated parking space, ensuring convenience for residents. With its desirable location, practical layout, and appeal as an ideal starter home, this property presents a fantastic opportunity to step onto the property ladder.

Entrance Hall

Double glazed door to the side aspect, access to kitchen, door to lounge, electric heater

Lounge

13' 6" max x 10' 10" max (4.11m max x 3.30m max)

Double glazed window to the front aspect, stairs to first floor, electric heater

Kitchen

8' 8" max x 6' 9" max (2.64m max x 2.06m max)

Double glazed windows to the side and front aspect, fitted kitchen with wall and base units, space for cooker, fridge freezer and washing machine, sink and draining board with mixer tap

Landing

Door access to bedrooms, loft access

Bedroom One

10' max x 9' max (3.05m max x 2.74m max)

Double glazed window to the front aspect, built in storage cupboard, electric heater

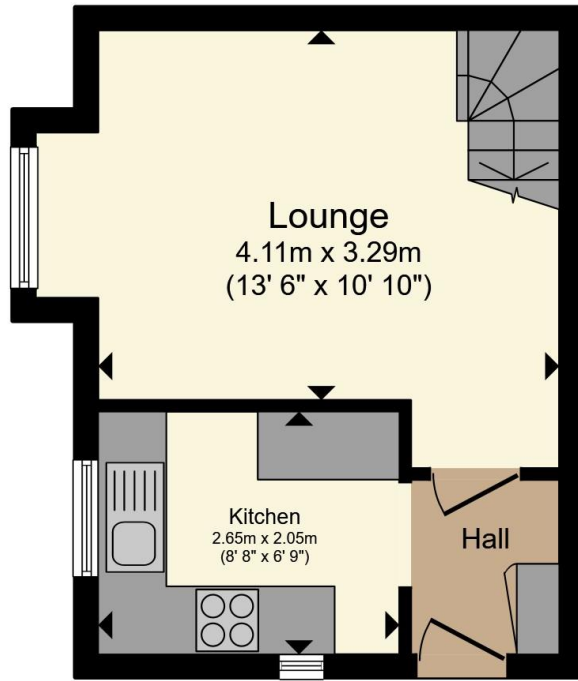
Bedroom Two

Double glazed window to the front aspect, electric heater

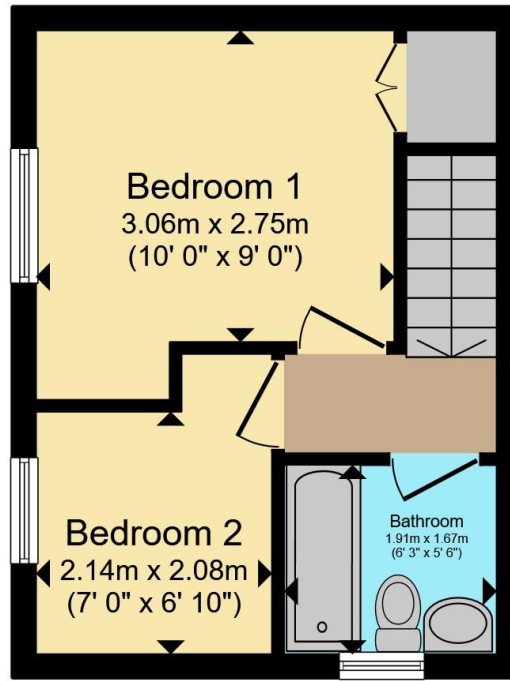
Bathroom

Double glazed obscured window to the side aspect, bath with shower over, wash hand basin, low level WC





Ground Floor



First Floor



Total floor area 45.4 m² (489 sq.ft.) approx

This floor plan is for illustrative purposes only. It is not drawn to scale. Any measurements, floor areas (including any total floor area), openings and orientation are approximate. No details are guaranteed, they cannot be relied upon for any purpose and they do not form part of any agreement. No liability is taken for any error, omission or misstatement. A party must rely upon its own inspection(s). Powered by www.propertybox.io



To view this property please contact Connells on

T 01752 345 135

E plympton@connells.co.uk

110 Ridgeway Plympton
PLYMOUTH PL7 2HN

EPC Rating: D Council Tax
Band: B

view this property online connells.co.uk/Property/PLN307630

Tenure: Freehold



1. MONEY LAUNDERING REGULATIONS Intending purchasers will be asked to produce identification documentation at a later stage and we would ask for your co-operation in order that there will be no delay in agreeing the sale. 2. These particulars do not constitute part or all of an offer or contract. 3. The measurements indicated are supplied for guidance only and as such must be considered incorrect. Potential buyers are advised to recheck measurements before committing to any expense. 4. We have not tested any apparatus, equipment, fixtures, fittings or services and it is in the buyers interest to check the working condition of any appliances.

Connells Residential is registered in England and Wales under company number 1489613, Registered Office is Cumbria House, 16-20 Hockliffe Street, Leighton Buzzard, Bedfordshire, LU7 1GN. VAT Registration Number is 500 2481 05.

See all our properties at www.connells.co.uk | www.rightmove.co.uk | www.zoopla.co.uk

Property Ref: PLN307630 - 0002