



REGENCY STREET, SW1P

£807 per week

Two Double Bedrooms
Two Bathrooms
Integrated Kitchen
Wood Flooring Throughout
Underground Parking
First Floor with Lift

@marshandparsons
marshandparsons.co.uk

MARSH &
PARSONS



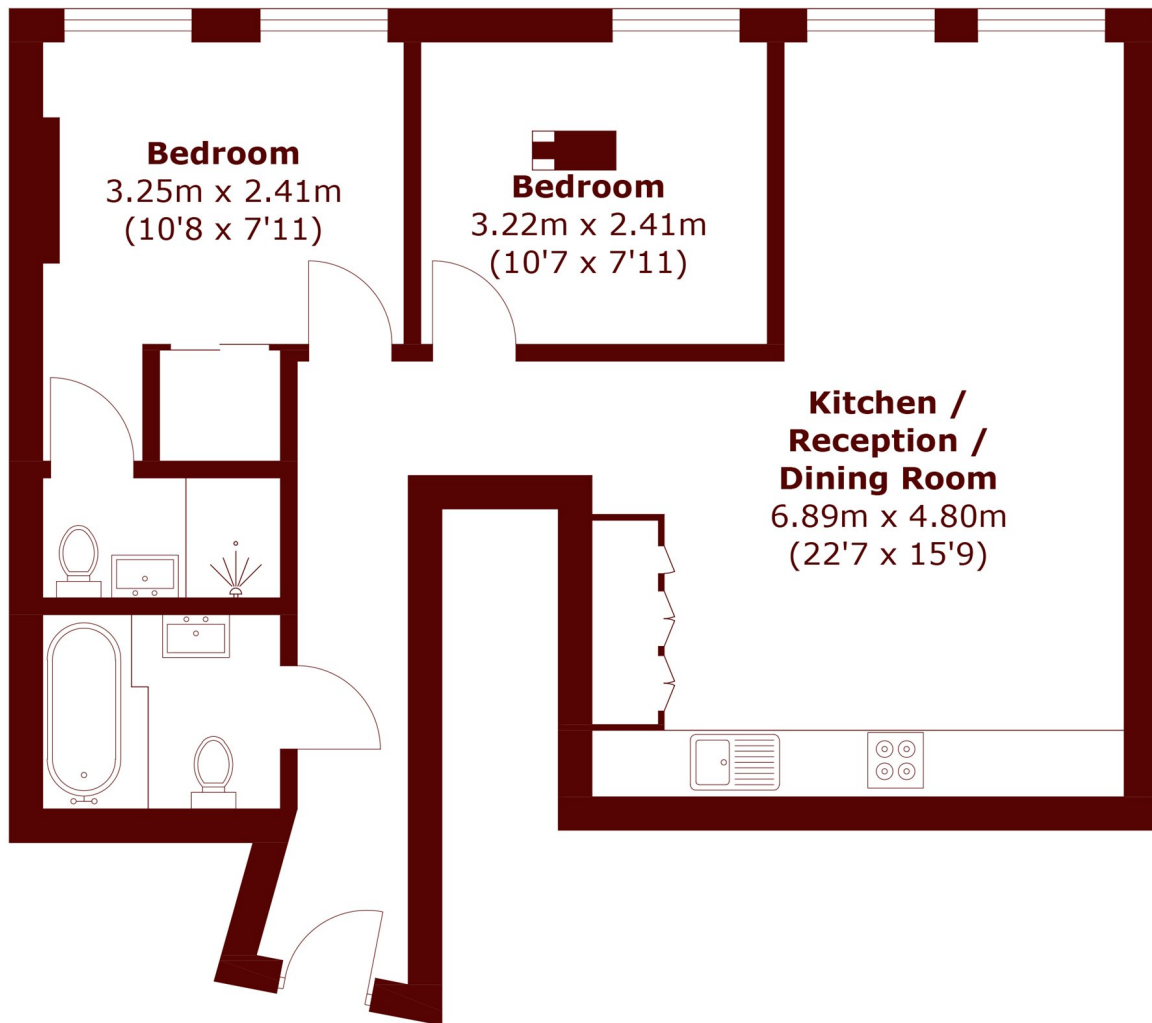
ABOUT THE PROPERTY

A beautiful two double bedroom, two bathroom modern apartment set on the first floor of this sought-after development. Further benefits include an open plan kitchen and private allocated underground parking.

Situated on a quiet street in Westminster, this property is ideally located moments from Pimlico Tube (Victoria line) and a short stroll to Victoria station (District line, Circle line, National Rail & Gatwick Express) for unrivalled transport links in and around the city.



STEP INSIDE REGENCY STREET



First Floor

Total area (approx.): 64.1 sq. m (689.9 sq. ft)

Pimlico & Westminster
020 7828 8100

Energy Rating: E We aim to make our particulars both accurate and reliable. However, they are not guaranteed; nor do they form part of an offer or contract. If you require clarification on any points then please contact us, especially if you're traveling some distance to view. Please note that appliances and heating systems have not been tested and therefore no warranties can be given as to their good working order

MARSH &
PARSONS