

ANTHONY JAMES MANSEY

Residential Sales & Lettings



Oaklands Avenue

Isleworth, TW7 5PY

£899,950

Freehold

Council Tax Band E

This is a substantial 1930's built semi detached property that has been extensively improved and extended by its present owner. Situated in a requested Avenue and within walking distance of Nishkam School, Grasshoppers RFC, Osterley Park, Wyke Green Gold course and Tesco's. The accommodation comprises on the ground floor of entrance hallway, cinema/reception room, study and large open plan kitchen and lounge area. The first floor provides three bedrooms, family bathroom, separate WC and balcony overlooking playing fields. The top floor affords a further two bedrooms and ensuite. There is off street parking to the front of the house and rear garden boasts a large, decked area, hot tub and outbuilding. This property is being sold chain free.

- A Substantial 1930's Built Home in Requested Avenue
- Spacious and Well Planned Accommodation Over Three Floors
- Large Open Plan Kitchen and Lounge Area
- Individual Cinema Room/Reception
- Five Bedrooms
- Fabulous Decked Area with Built in Bar B Que
- Backing onto Green Acres
- Off Street Parking
- Being Sold Chain Free
- Short Distance to Osterley Park & Wyke Green Golf Course

Viewing

Please contact our Sales Office on 020 8847 0488 if you wish to arrange a viewing appointment for this property or require further information.



5



2



2



C

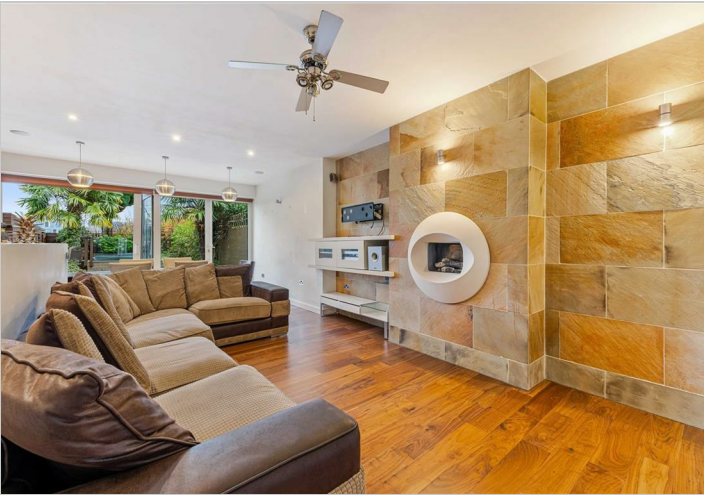
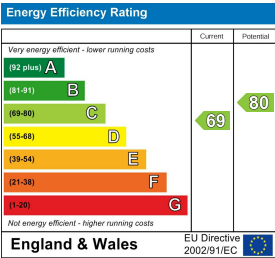
Floor Plan



Area Map



Energy Efficiency Graph



These particulars, whilst believed to be accurate are set out as a general outline only for guidance and do not constitute any part of an offer or contract. Intending purchasers should not rely on them as statements of representation of fact, but must satisfy themselves by inspection or otherwise as to their accuracy. No person in this firms employment has the authority to make or give any representation or warranty in respect of the property.