



St. James's Gardens, W11

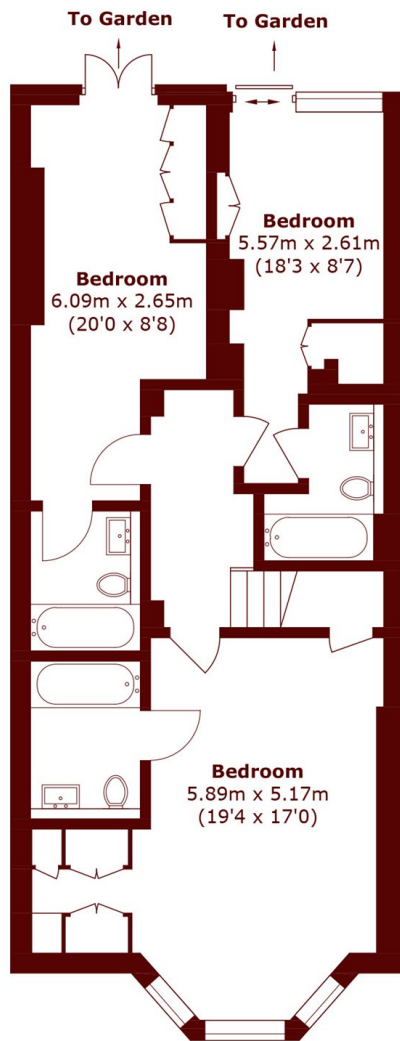
£2,600,000



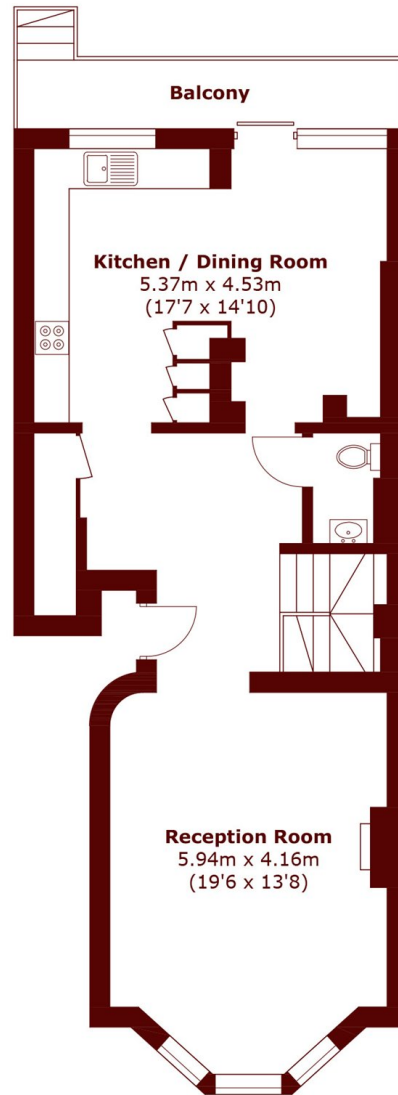
- Excellent Location
- Three Double Bedrooms

- High Ceilings
- Private Garden

- Three En Suite Bathrooms
- Private Communal Garden



Lower Ground Floor



Ground Floor

Total area (approx.): 131.6 sq. m (1416.5 sq. ft)
Balcony area: 6.6 sq. m (71.0 sq. ft)

Marsh & Parsons Holland Park

57 Norland Square, London,
W11 4QJ
020 7605 6890