



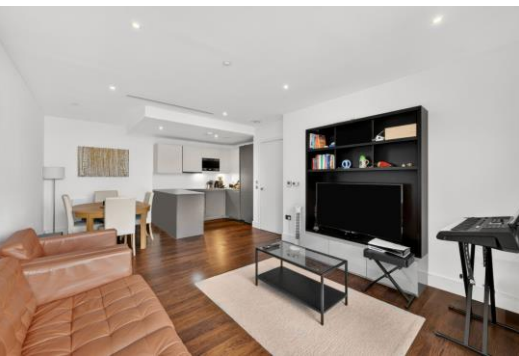
Maine Tower

9 Harbour Way, E14

Asking Price £500,000

A luxury West-facing 640sq ft 1 bedroom apartment set on the 25th floor of the stunning Maine Tower, superbly-located in South Quay just a 0.4 mile walk to Canary Wharf Jubilee Line station & within easy walking distance of the business district.

CHESTERTONS



Maine Tower

9 Harbour Way, E14

- 640sq ft 25th floor 1 bedroom apartment with balcony.
- West-facing apartment with views towards the river & city.
- Conveniently-located in the heart of South Quay for easy access to Canary Wharf.
- Offered chain-free.



A luxury West-facing 640sq ft 1 bedroom apartment with private balcony set on the 25th floor of the stunning Maine Tower, superbly located in South Quay just a 0.4 mile walk to Canary Wharf Jubilee Line station & within easy walking distance of the business district. The apartment benefits from a clean modern finish, as well as air-conditioning / cooling for the summer months.

Maine Tower residents benefit from 24 hour concierge facility, as well as a residents' lounge, screening room, & games room.

The development is situated in the heart of South Quay, a safe, modern residential area, located a stone's throw from Canary Wharf,

Tenure: Leasehold – 988 years remaining approx.
Service Charge: TBC
Ground Rent: £350pa
Local Authority: Tower Hamlets
Council Tax Band: E

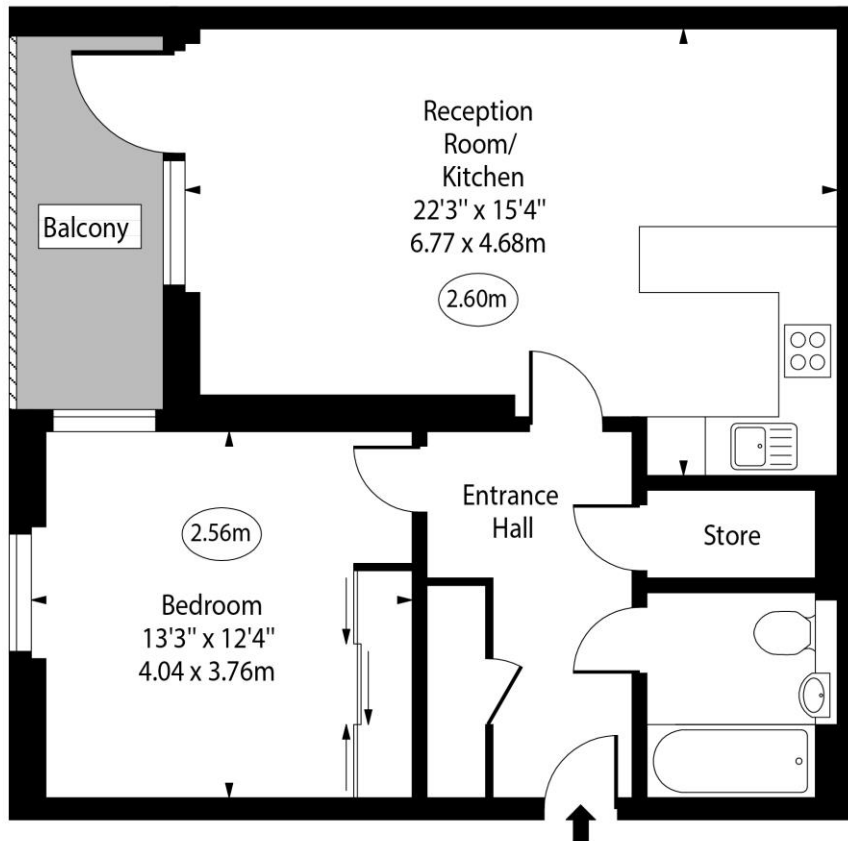
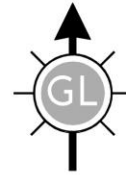
Score	Energy rating	Current	Potential
92+	A		
81-91	B	85 B	85 B
69-80	C		
55-68	D		
39-54	E		
21-38	F		
1-20	G		

Chestertons Canary Wharf & Greenwich Sales

Harbour Island
 28 Harbour Exchange Square
 London
 E14 9GE
 canarywharf@chestertons.co.uk
 020 7510 8300
 chestertons.co.uk

Maine Tower,
Harbour Way, E14

○ - Ceiling Height



Twenty Fifth Floor

Approx Gross Internal Area 640 Sq Ft - 59.46 Sq M

Every attempt has been made to ensure the accuracy of the floor plan shown. However, all measurements, fixtures, fittings, and data shown are approximate interpretations and for illustrative purposes only. Measured according to the RICS. Not To Scale.

www.goldlens.co.uk

Ref. No. 031698J

