

12 Brewster Terrace, Ripon, HG4 2HY

£900PCM (Deposit: £1,038)

 2  1  1



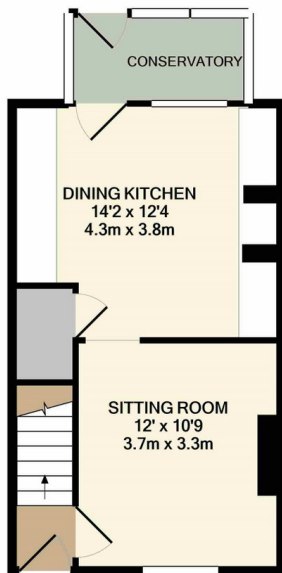
Score	Energy rating	Current	Potential
92+	A		
81-91	B		87 B
69-80	C	70 C	
55-68	D		
39-54	E		
21-38	F		
1-20	G		

Tax Band: B Furnished: Unfurnished

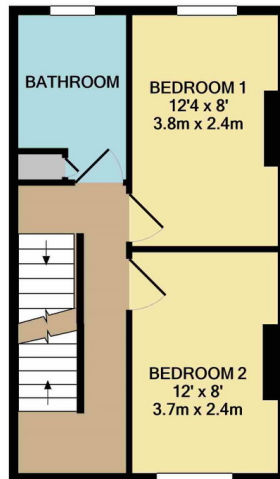
An attractive period home conveniently situated just moments from Ripon market place and a wide range of amenities. The spacious accommodation is complemented by modern fittings and some characterful features. The property is offered in excellent order with neutral décor and benefits from gas central heating, double glazing throughout and a small conservatory.

APPLICATION INFORMATION One weeks rent is payable to reserve a property which will then be deducted from the first month's rent. Properties will remain available until this is paid. As part of the application, you will need to provide at least one form of photo identification such as (colour copy of passport, driver's licence and a utility bill). The completion and submission of the initial application does not guarantee the offer of a tenancy, this is subject to satisfactory references being obtained. A deposit equivalent to five weeks rent is payable before the commencement of the Tenancy. The first month's rent will be requested on the day the tenancy commences and after the contracts are signed. Applicants must show evidence of their content's insurance prior to the start of a tenancy. Payments can be made by bank transfer only. Personal cheques are not acceptable.

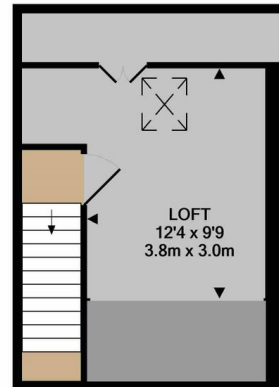
- Spacious Period Home
- Two Bedrooms
- Superb Dining Kitchen
- Conservatory & Yard
- Quiet Location
- Gas Central Heating
- Big Loft
- Tastefully Decorated
- Character Features
- Convenient for Ripon Centre



GROUND FLOOR
APPROX. FLOOR
AREA 382 SQ.FT.
(35.5 SQ.M.)



1ST FLOOR
APPROX. FLOOR
AREA 335 SQ.FT.
(31.1 SQ.M.)



2ND FLOOR
APPROX. FLOOR
AREA 258 SQ.FT.
(24.0 SQ.M.)

TOTAL APPROX. FLOOR AREA 975 SQ.FT. (90.5 SQ.M.)

Whilst every attempt has been made to ensure the accuracy of the floor plan contained here, measurements of doors, windows, rooms and any other items are approximate and no responsibility is taken for any error, omission, or mis-statement. This plan is for illustrative purposes only and should be used as such by any prospective purchaser. The services, systems and appliances shown have not been tested and no guarantee as to their operability or efficiency can be given
Made with Metropix ©2021

01765 608203

SOLO PROPERTY MANAGEMENT LTD
Visit our showroom at 13 Fishergate, Ripon, HG4 1EA

EMAIL
Info@solopm.com www.solopropertymanagement.com

