



4 Ashley Place Walton-On-Thames Surrey KT12 1JF

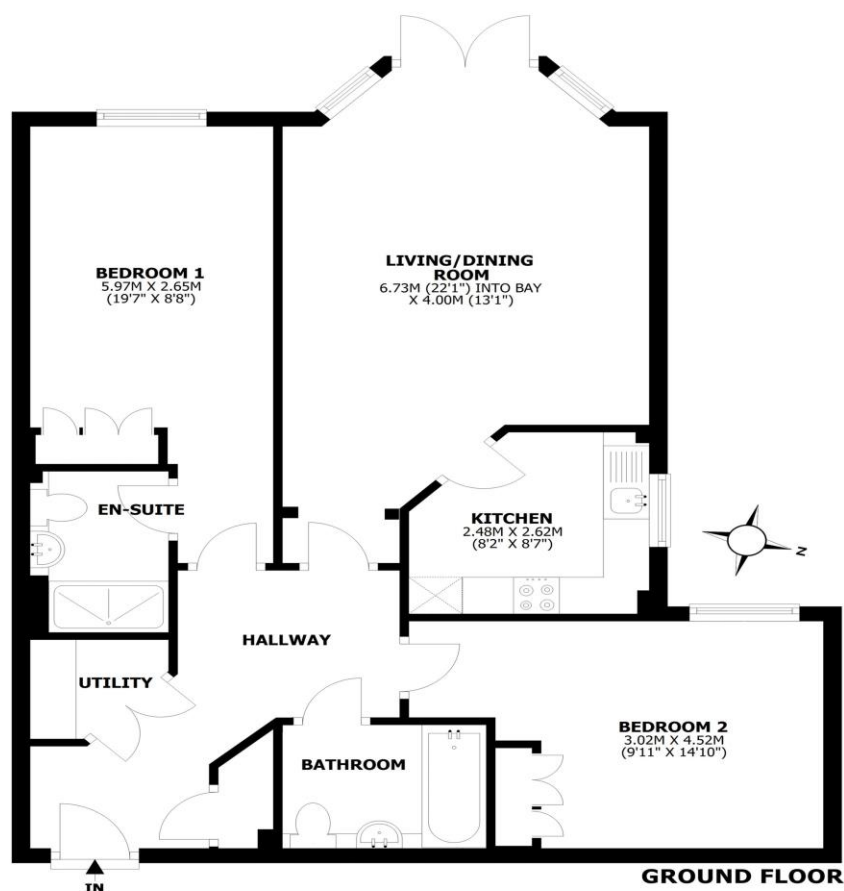
£380,000





Ashley Place, Walton-on-Thames, KT12

Total area: approx. 74.1 sq. metres (798.0 sq. feet)



This floorplan is for illustrative guidance only and is not to drawn to scale. Whilst every attempt has been made to ensure accuracy, measurements are approximate and should not be relied upon as a matter of fact. Maximum dimensions are given excluding small alcoves, etc unless otherwise stated.

For sale with no onward chain and nestled quietly at the rear of the development and away from the roadside, 4 Ashley Place offers a wonderful blend of convenience and peaceful ground-floor living. This nicely presented and generously proportioned two-bedroom apartment is positioned in a highly sought-after location within Walton-on-Thames, making it an ideal choice for those who want quick access to both the vibrant town centre and the local mainline train station. The living space is bright and welcoming, featuring a good-sized layout that flows effortlessly out through direct access onto a private patio area, which seamlessly connects to the well-maintained communal gardens. Both bedrooms are comfortable doubles, with the principal bedroom benefiting from practical built-in wardrobes as well as its own private en-suite shower room. A further well-appointed family bathroom serves the rest of the apartment. Further practical benefits include full double glazing and gas central heating throughout, ensuring comfort and energy efficiency across all seasons. Externally, the property benefits from an allocated parking space for one vehicle. Combining its quiet position, outdoor access, and fantastic transport links, this property represents an excellent opportunity for first-time buyers, downsizers, or investment buyers alike. EPC Rating B.



AGENTS NOTES: These details do not constitute any part of an offer or contract. In issuing them we do not have any authority to give any warranty or representation whatsoever in respect of this property. These details are provided without any responsibility on our part or the part of the vendors. No statements in these details are to be relied upon as representations of fact and purchasers should satisfy themselves by inspection or otherwise as to the accuracy of the statements contained therein.

Equipment: We have not tested the equipment or central heating system mentioned in these particulars and purchasers are advised to satisfy themselves as to their working order and condition.

Measurements: Great care is taken when measuring but measurements should not be relied upon for ordering carpets, equipment, etc.