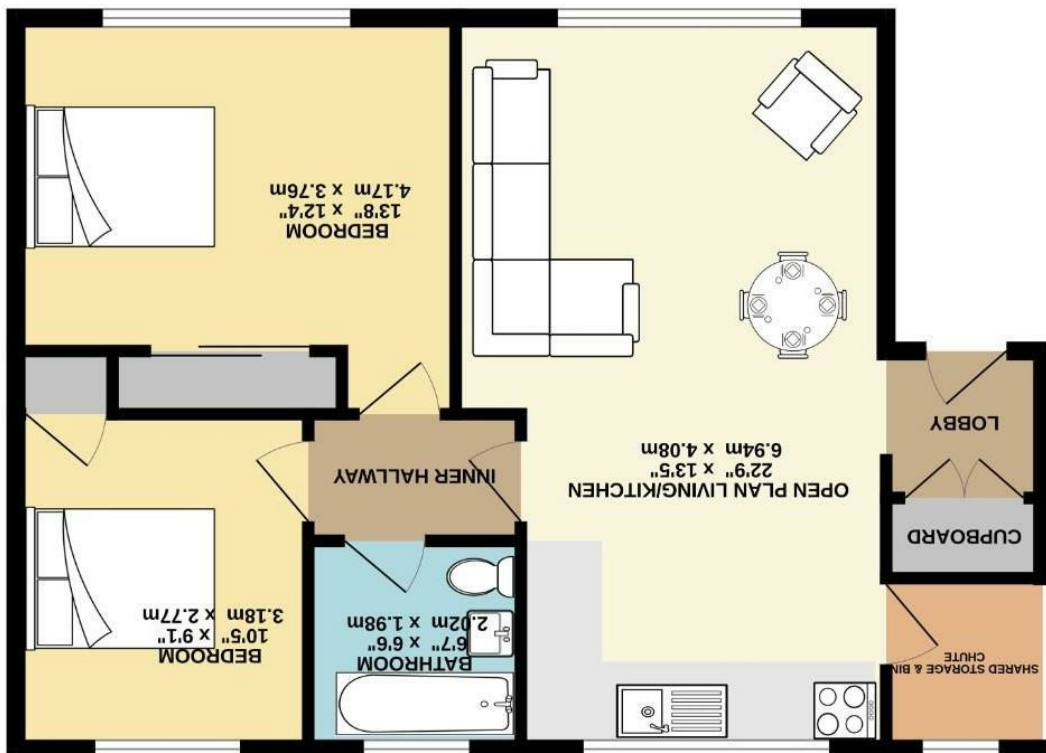


Fishwick are believed to be accurate but they are not guaranteed and do not form a contract. Neither Jordan Fishwick nor the vendor or lessor accept any responsibility in respect of these particulars, which are not intended to be statements or representations of fact and any intending purchaser or lessee must satisfy himself by inspection or otherwise as to the correctness of each of the statements contained in these particulars. Any floorplans on this brochure are for illustrative purposes only and are not necessarily to scale.



TOTAL FLOOR AREA - 677 sq.ft. (62.9 sq.m.) approx.  
Measurements are approximate. Not to scale. For illustrative purposes only.  
Made with Metretek 02025



FIRST FLOOR  
677 sq.ft. (62.9 sq.m.) approx.





Brankgate Court, Didsbury M20 2PD

£235,000



### The Property

A SPACIOUS, TWO DOUBLE BEDROOM, FIRST FLOOR APARTMENT FORMING PART OF A PURPOSE BUILT DEVELOPMENT WITH GATED PARKING AND AN EXCELLENT LOCATION, BEING WITHIN A SHORT STROLL OF BURTON ROAD. 677 sq ft. The vibrant shops, bars and restaurants of West Didsbury, along with the Metrolink are all close at hand. Large uPVC double glazed windows provide light & well presented living space including a lovely open plan living/kitchen area, two excellent double bedrooms with built-in storage and the bathroom with white suite. In addition, there is a shared storage area & bin chute, separate bike store/storage shed, enclosed communal garden, well tended grounds and gated residents parking. \*No onward chain\*

### Directions

M20 2PD



- Two double bedroom apartment
- Open plan living/kitchen area
- Bathroom with white suite
- uPVC double glazing
- Gated residents parking
- Communal garden & grounds
- Separate bike store/shed
- Great location in West Didsbury
- Close to Burton Road & Metrolink
- No onward chain

Postcode - M20 2PD

EPC Rating - D

Floor Area - 677.00 sq ft

Local Authority - Manchester City Council

Council Tax - B

